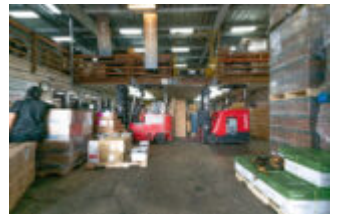


3145 OIHANA STREET

<https://chaneybrooks.com>

3145 Oihana Street,
Lihue, HI, USA



\$ 3,300,000.00

Owner-User Opportunity | 14,000 SF Building with Loading Dock



Anthony Provenzano

Senior Vice President

(808) 544-1780

aprovenzano@chaneybrooks.com

<http://contactus@chaneybrooks.com>

- Industrial
- For sale
- Open
- 14002 sq ft



CALL US NOW

Phone: +1 808-544-1600

Email: contactus@chaneybrooks.com

Address: 1440 Kapiolani Blvd. Suite 1010
Honolulu, HI 96814

 CUSHMAN & WAKEFIELD | ChaneyBrooks

BASIC FACTS

Status: Open

Type: Industrial

Purchase Type: Fee Simple

Area: 14002 sq ft

Lot size: 20197 sq ft

Year built: 1964 / 1974 Effective

Zoning: I-L



CALL US NOW

Phone: +1 808-544-1600

Email: contactus@chaneybrooks.com

Address: 1440 Kapiolani Blvd. Suite 1010
Honolulu, HI 96814