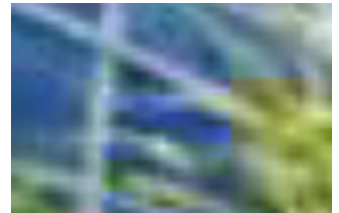


352 LEWERS STREET

<https://chaneybrooks.com>

352 Lewers Street,
Honolulu, HI, USA



\$ 5,800,000.00

Rare Waikiki Flagship Location



Anthony Provenzano

Executive Vice President

(808) 544-1780

aprovenzano@chaneybrooks.com

<https://proteamhi.com>

- Retail
- For sale
- Open
- 2260 sq ft



CALL US NOW

Phone: +1 808-544-1600

Email: contactus@chaneybrooks.com

Address: 1440 Kapiolani Blvd. Suite 1010
Honolulu, HI 96814

 CUSHMAN & WAKEFIELD | ChaneyBrooks

BASIC FACTS

Status: Open

Type: Retail

Purchase Type: Fee Simple

Area: 2260 sq ft

Lot size: 4108 sq ft

Year built: 1988

Zoning: RESCOM



CALL US NOW

Phone: +1 808-544-1600

Email: contactus@chaneybrooks.com

Address: 1440 Kapiolani Blvd. Suite 1010
Honolulu, HI 96814