



ALAHAO INDUSTRIAL PARK

ALAHAO INDUSTRIAL PARK



ANTHONY PROVENZANO (B), CCIM, SIOR
+1 808 387 3444
aprovenzano@chaneybrooks.com

KELLY A. VEA (S), CCIM
+1 808 489 2703
kvea@chaneybrooks.com

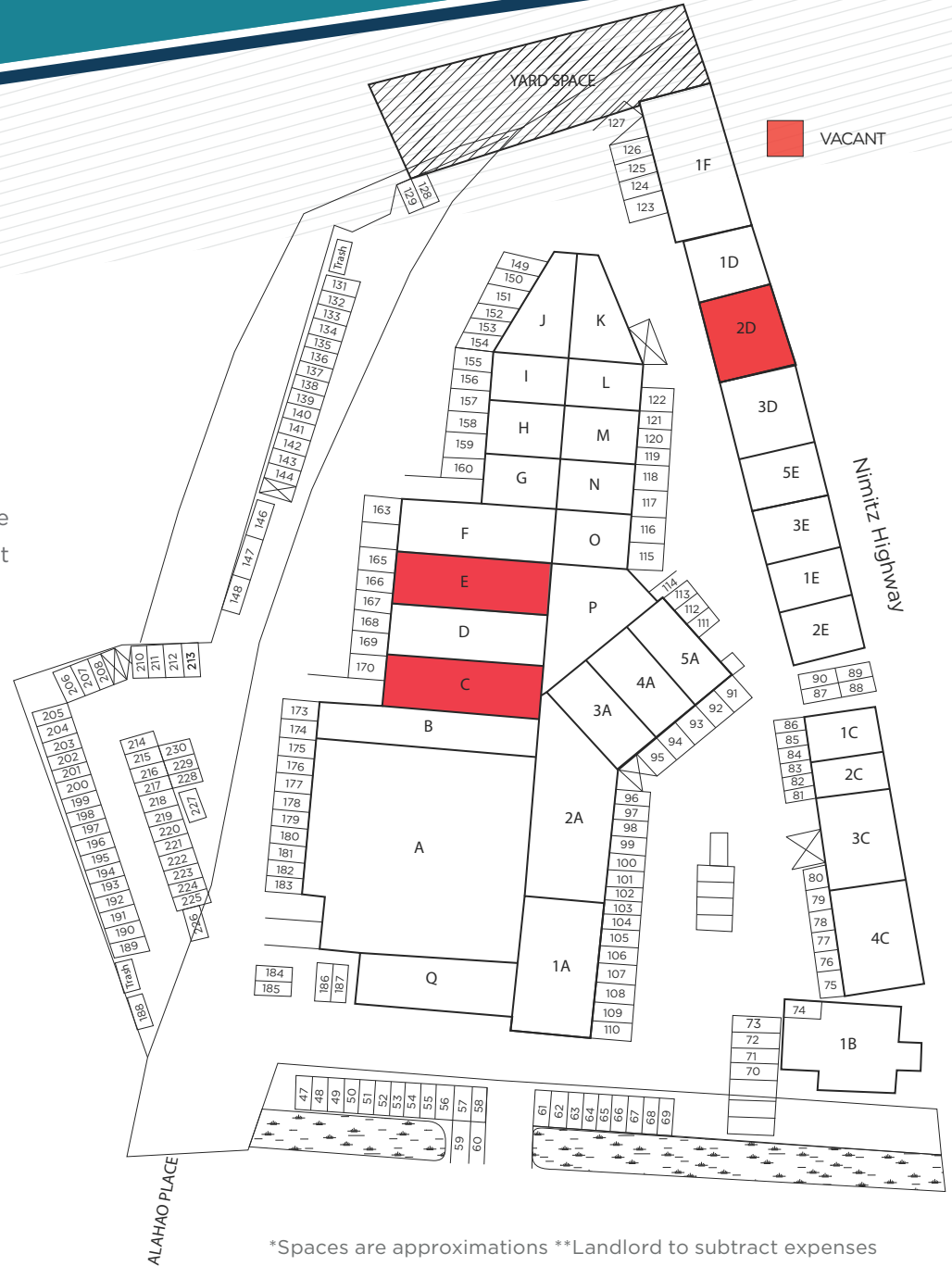
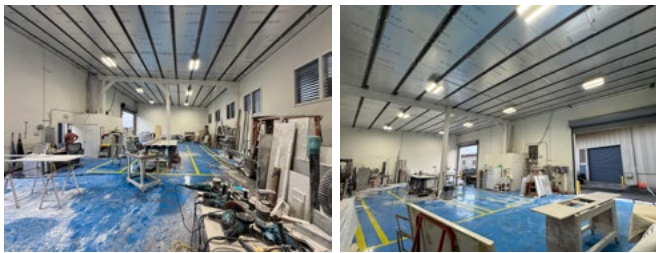
TREVOR BLAKE (S)
+1 808 778 7409
tblake@chaneybrooks.com

ALAHAO WEST

AVAILABLE WAREHOUSE SPACES

UNIT	TOTAL SIZE*	MONTHLY GROSS RENT	AVAILABLE
2D	2,566 SF	\$5,645.20	Now

Located in Alahao Industrial Park, Unit 2D offers 2,566 SF of high-cube warehouse space with two roll-up doors, two restrooms, and a clean, efficient layout. Ideal for a variety of industrial, storage, or service-oriented uses.



ALAHAO WEST

AVAILABLE WAREHOUSE SPACES

UNIT	TOTAL SIZE*	MONTHLY GROSS RENT	AVAILABLE
C	5,540 SF	\$9,307.20	9/1/2025

Unit C offers a spacious layout with a total of 5,540 SF, including 1,752 SF of ground floor space and a generous 3,788 SF mezzanine. The high cube design provides additional vertical storage, and the large roll-up door ensures convenient access for industrial operations. Zoned I-2, this unit is ideal for businesses looking for flexibility in both office and warehouse space.



*Spaces are approximations **Landlord to subtract expenses

ANTHONY PROVENZANO (B), CCIM, SIOR

+1 808 387 3444
aprovenzano@chaneybrooks.com

KELLY A. VEA (S), CCIM

+1 808 489 2703
kvea@chaneybrooks.com

TREVOR BLAKE (S)

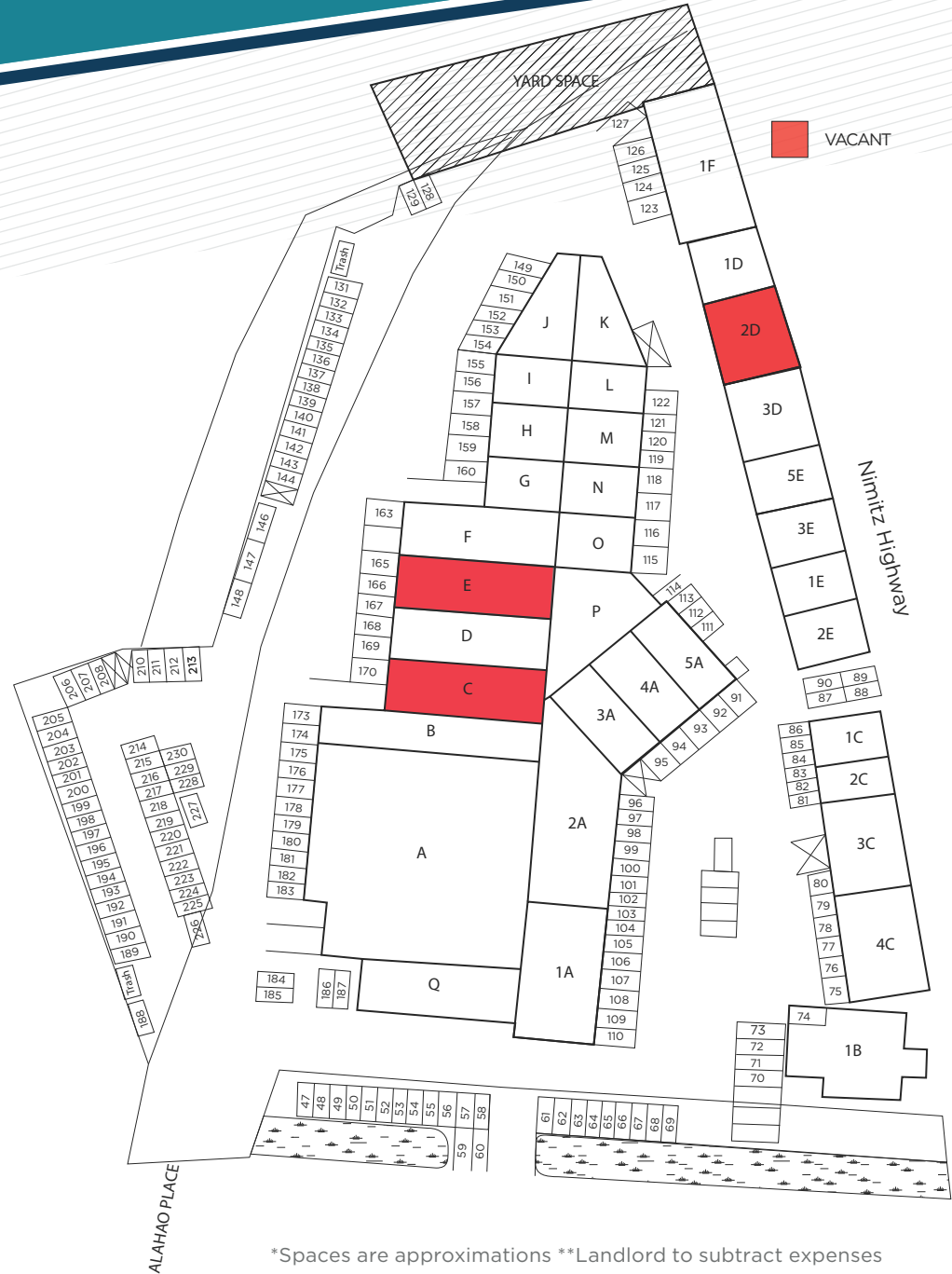
+1 808 778 7409
tblake@chaneybrooks.com

ALAHAO WEST

AVAILABLE WAREHOUSE SPACES

UNIT	TOTAL SIZE*	MONTHLY GROSS RENT	AVAILABLE
E	2,685 SF	\$5,557.95	Now

Unit E at Alahao Industrial Park offers 2,685 square feet of high-cube industrial space, including 1,851 square feet of ground floor warehouse and 834 square feet of mezzanine built out as office space. The unit features a large roll-up door for loading, a private restroom, and a functional layout that supports both office and warehouse operations. Ideal for light industrial, storage, or contractor use.



ANTHONY PROVENZANO (B), CCIM, SIOR

+1 808 387 3444
aprovenzano@chaneybrooks.com

KELLY A. VEA (S), CCIM

+1 808 489 2703
kvea@chaneybrooks.com

TREVOR BLAKE (S)

+1 808 778 7409
tblake@chaneybrooks.com

ALAHAO EAST

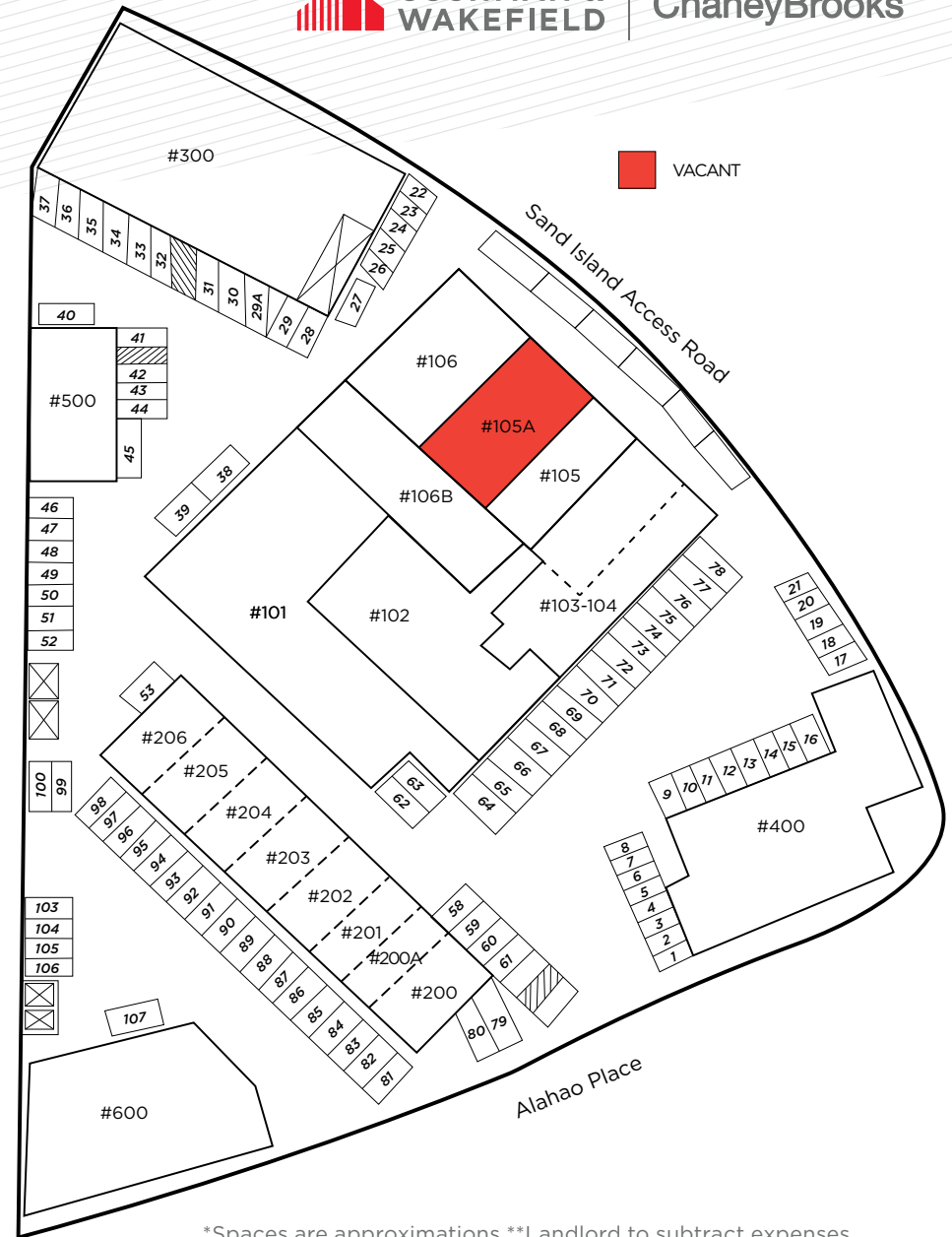


ChaneyBrooks

AVAILABLE OFFICE/RETAIL SPACE

UNIT	TOTAL SIZE*	MONTHLY GROSS RENT	AVAILABLE
105A	2,233 SF	\$4,466.00	Now

Unit 105A offers prime retail space within Alahao Industrial Park, featuring an open floor plan ideal for a variety of retail uses. With prominent window frontage along bustling Sand Island Access Road, this space ensures high visibility. It also includes a dedicated storage room and private restroom. Don't miss the chance to secure this exceptional 2,333 SF retail opportunity!



*Spaces are approximations **Landlord to subtract expenses

ANTHONY PROVENZANO (B), CCIM, SIOR

+1 808 387 3444
aprovenzano@chaneybrooks.com

KELLY A. VEA (S), CCIM

+1 808 489 2703
kvea@chaneybrooks.com

TREVOR BLAKE (S)

+1 808 778 7409
tblake@chaneybrooks.com

ALAHAO EAST

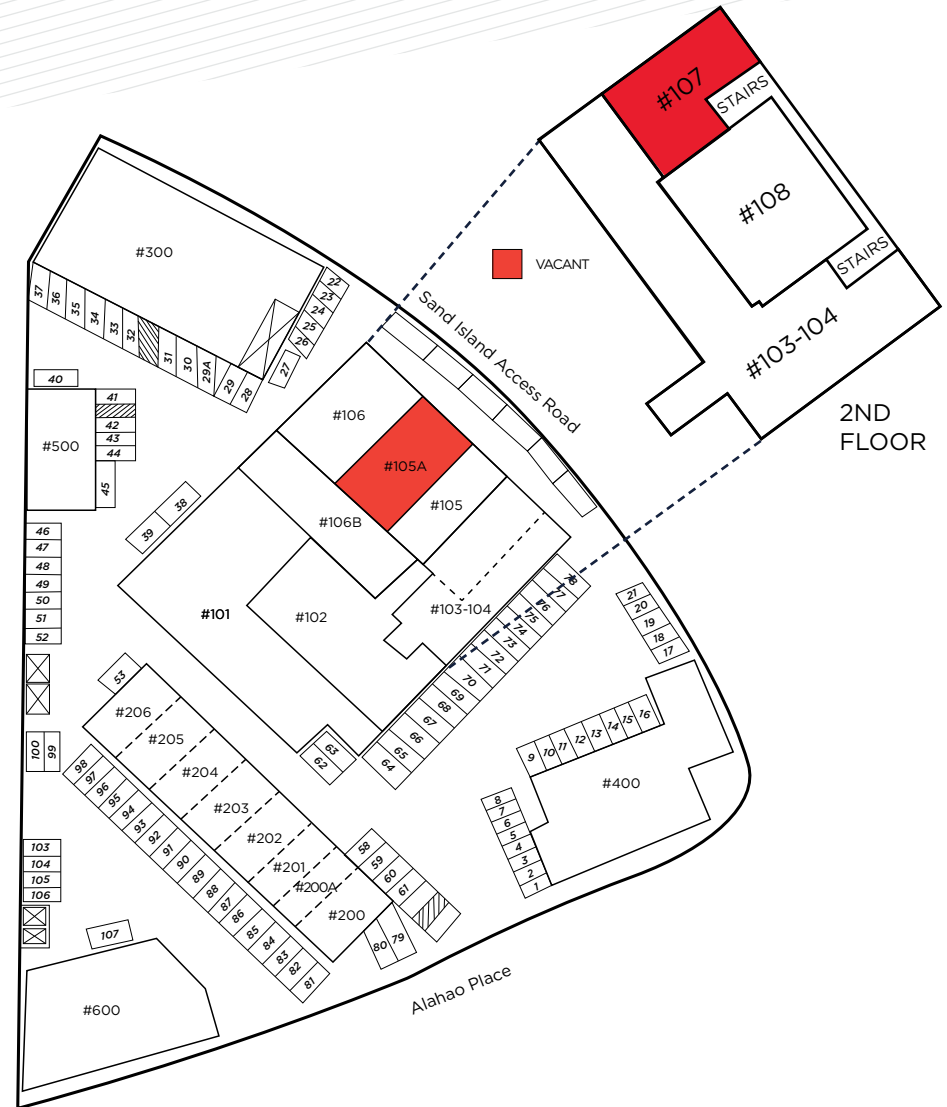


ChaneyBrooks

AVAILABLE RETAIL/OFFICE SPACE

UNIT	TOTAL SIZE*	MONTHLY GROSS RENT
107	942 SF	\$1,648.50

Unit 107 in the Alahao Industrial Park offers a spacious and versatile 942-square-foot layout, perfect for various business needs. The open floor plan and large windows provide ample natural light, creating a bright and welcoming atmosphere. Located on a well-trafficked street, the unit is easily accessible by both private and commercial vehicles, making it an ideal choice for businesses requiring a central and convenient location.



*Spaces are approximations **Landlord to subtract expenses

ANTHONY PROVENZANO (B), CCIM, SIOR

+1 808 387 3444
aprovenzano@chaneybrooks.com

KELLY A. VEA (S), CCIM


+1 808 489 2703
kvea@chaneybrooks.com

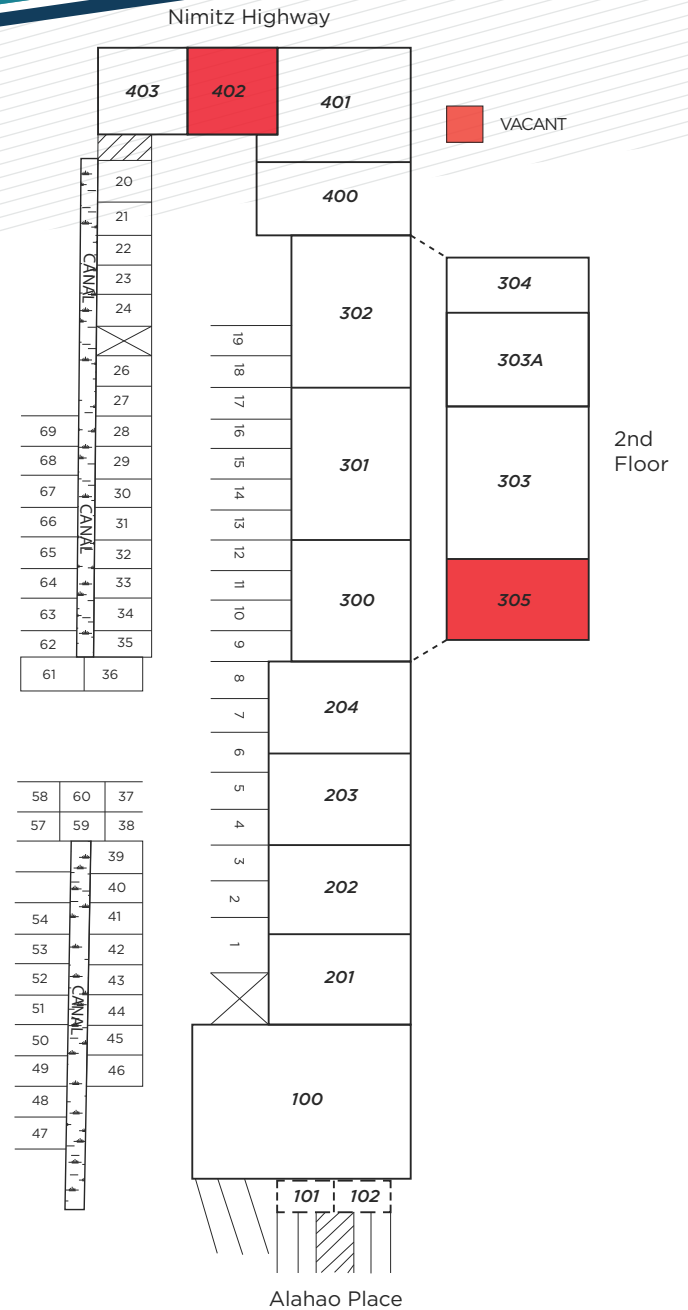
TREVOR BLAKE (S)

+1 808 778 7409
tblake@chaneybrooks.com

ALAHAO MID

AVAILABLE OFFICE SPACE

UNIT	TOTAL SIZE*	MONTHLY GROSS RENT	VIRTUAL TOUR
305	828 SF	\$1,407.60	



*Spaces are approximations **Landlord to subtract expenses

ANTHONY PROVENZANO (B), CCIM, SIOR

+1 808 387 3444
aprovenzano@chaneybrooks.com

KELLY A. VEA (S), CCIM

+1 808 489 2703
kvea@chaneybrooks.com

TREVOR BLAKE (S)

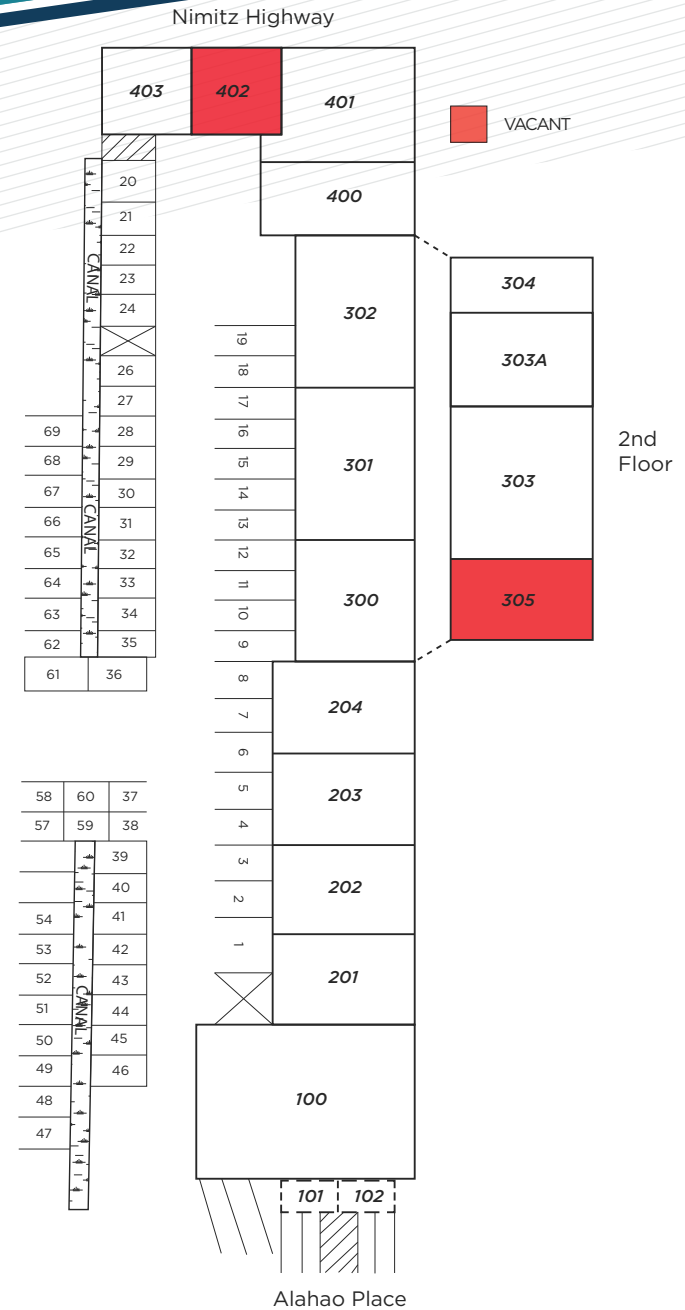
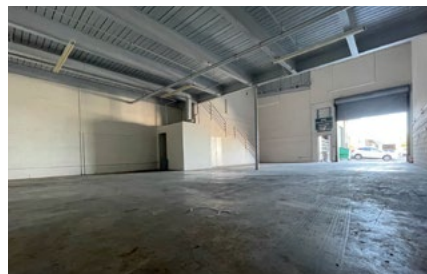
+1 808 778 7409
tblake@chaneybrooks.com

ALAHAO MID

AVAILABLE WAREHOUSE/OFFICE SPACE

UNIT	TOTAL SIZE*	MONTHLY GROSS RENT	AVAILABLE
402	3,397 SF	\$6,963.85	Now

Unit 402 offers a versatile 3,397 SF industrial space well suited for contractors, light industrial users, storage, or distribution. The unit features 2,278 SF of ground floor warehouse space with a roll-up door for convenient loading, high cube ceilings, and an open layout that allows for flexible operations. An additional 1,198 SF mezzanine provides bonus space ideal for storage or operational support, while the office area offers functional workspace. The unit also includes a private restroom and is located within an I-2 zoned industrial park allowing for a wide range of industrial and commercial uses. Situated in centrally located Alahao Industrial Park, the property provides convenient access to Honolulu's primary industrial corridors.



*Spaces are approximations **Landlord to subtract expenses

ANTHONY PROVENZANO (B), CCIM, SIOR

+1 808 387 3444
aprovenzano@chaneybrooks.com

KELLY A. VEA (S), CCIM

+1 808 489 2703
kvea@chaneybrooks.com

TREVOR BLAKE (S)

+1 808 778 7409
tblake@chaneybrooks.com



CONTACT US FOR MORE INFORMATION

ANTHONY PROVENZANO (B), CCIM, SIOR

+1 808 387 3444
aprovenzano@chaneybrooks.com
RB-22101

KELLY A. VEA (S), CCIM

+1 808 489 2703
kvea@chaneybrooks.com
RS-79079

TREVOR BLAKE (S)

+1 808 778 7409
tblake@chaneybrooks.com
RS-87251



ChaneyBrooks

Independently Owned and Operated / A Member of the Cushman & Wakefield Alliance
©2025 Cushman & Wakefield ChaneyBrooks. All rights reserved. The information contained in this communication is strictly confidential. This information has been obtained from sources believed to be reliable but has not been verified. NO WARRANTY OR REPRESENTATION, EXPRESS OR IMPLIED, IS MADE AS TO THE CONDITION OF THE PROPERTY (OR PROPERTIES) REFERENCED HEREIN OR AS TO THE ACCURACY OR COMPLETENESS OF THE INFORMATION CONTAINED HEREIN, AND SAME IS SUBMITTED SUBJECT TO ERRORS, OMISSIONS, CHANGE OF PRICE, RENTAL OR OTHER CONDITIONS, WITHDRAWAL WITHOUT NOTICE, AND TO ANY SPECIAL LISTING CONDITIONS IMPOSED BY THE PROPERTY OWNER(S). ANY PROJECTIONS, OPINIONS OR ESTIMATES ARE SUBJECT TO UNCERTAINTY AND DO NOT SIGNIFY CURRENT OR FUTURE PROPERTY PERFORMANCE.

1440 Kapiolani Boulevard Suite 1010
Honolulu, Hawaii 96814
RB-17805

www.chaneybrooks.com