



CUSHMAN &
WAKEFIELD

ChaneyBrooks



ALAHAO INDUSTRIAL PARK



CUSHMAN &
WAKEFIELD

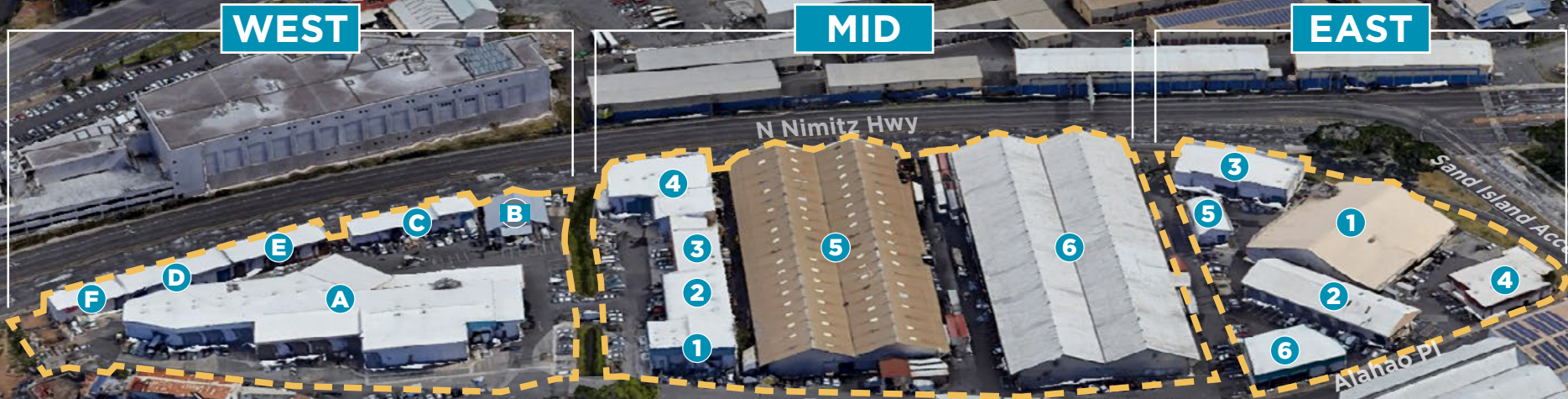
ChaneyBrooks

ALAHAO INDUSTRIAL PARK

WEST

MID

EAST



ANTHONY PROVENZANO (B), CCIM, SIOR
+1 808 387 3444
aprovenzano@chaneybrooks.com

KELLY A. VEA (S), CCIM
+1 808 489 2703
kvea@chaneybrooks.com

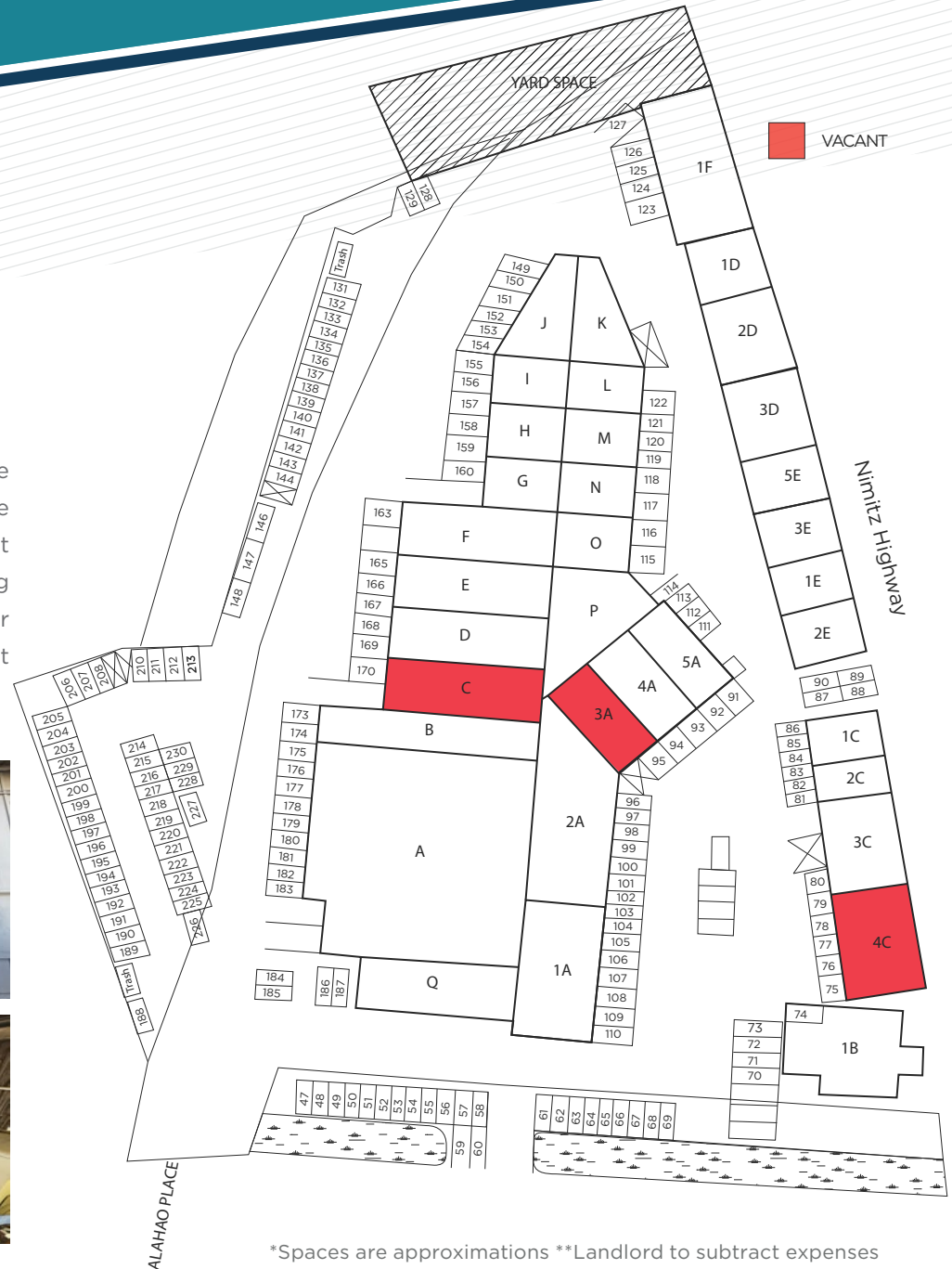
TREVOR BLAKE (S)
+1 808 778 7409
tblake@chaneybrooks.com

ALAHAO WEST

AVAILABLE WAREHOUSE SPACES

UNIT	TOTAL SIZE*	MONTHLY GROSS RENT	AVAILABLE
3A	1,397 SF	\$2,947.67	9/1/2025

Located in the well-maintained Alahao Industrial Park, this high-cube warehouse unit offers a total area of 1,397 square feet, including 1,234 square feet of ground-level floor space and a 163 square foot mezzanine. The unit features a convenient roll-up door for easy loading and unloading, along with an in-unit restroom for added functionality. Ideal for light industrial or storage use, the space is part of a clean, professionally managed complex that supports a range of business operations.

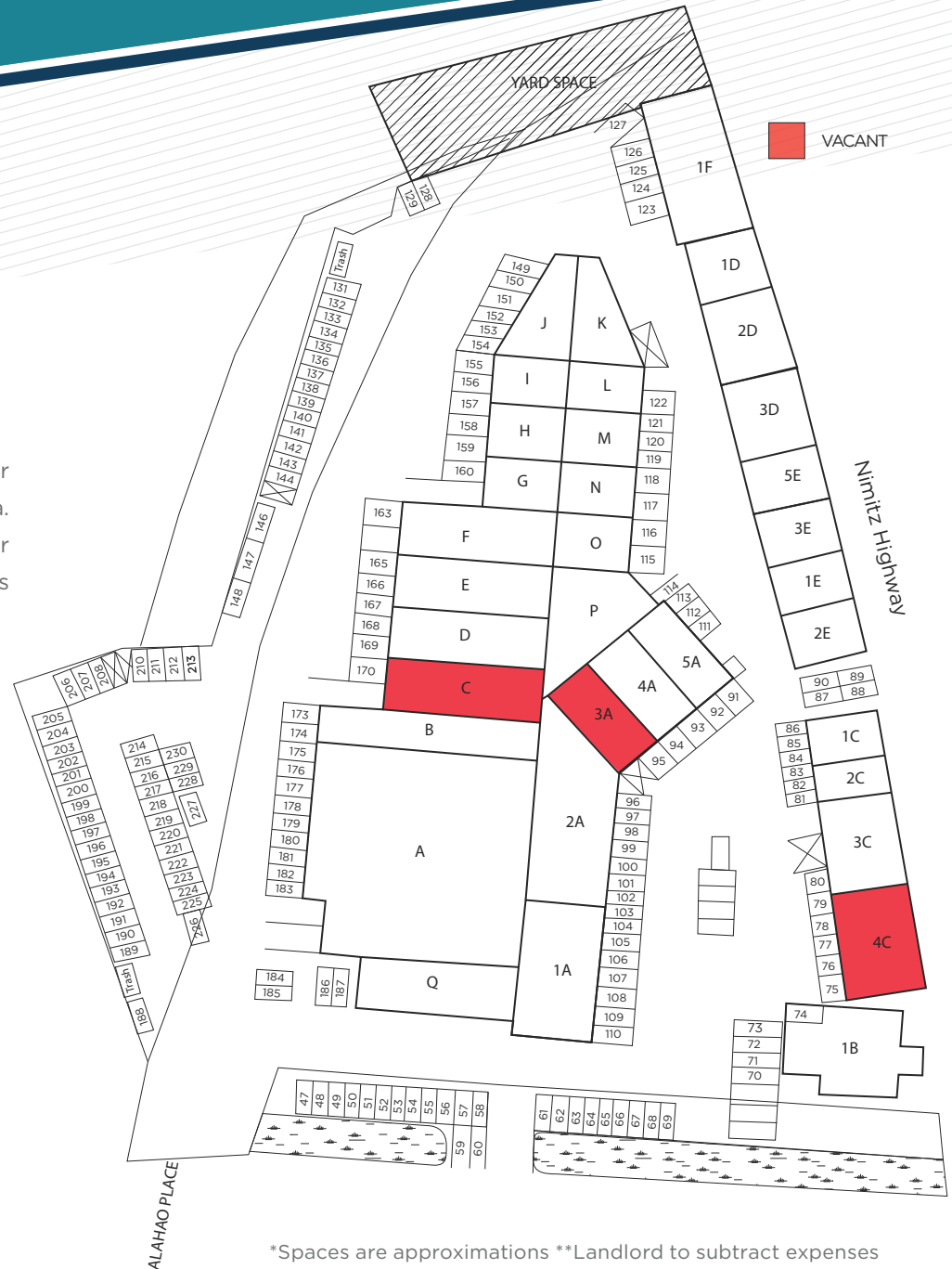
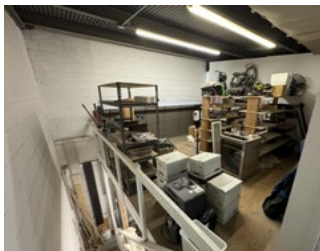
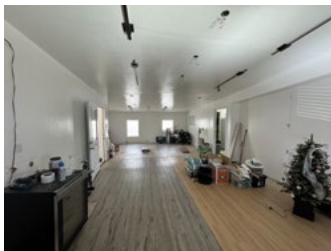
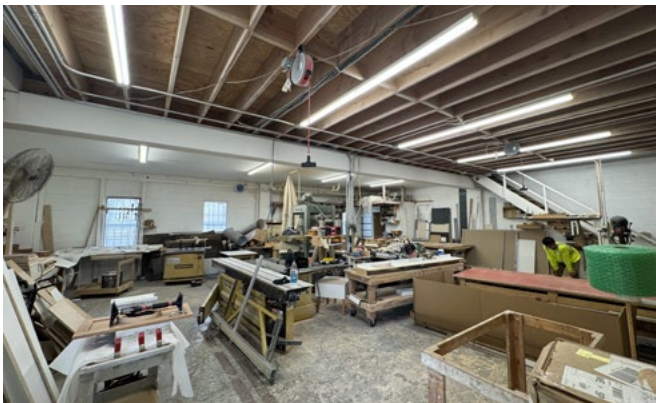


ALAHAO WEST

AVAILABLE WAREHOUSE SPACES

UNIT	TOTAL SIZE*	MONTHLY GROSS RENT	AVAILABLE
4C	2,495 SF	\$4,640.70	Now

This unit at Alahao Industrial Park features 1,375 SF of versatile ground floor space, complemented by an additional 1,120 SF of mezzanine/office area. The roll-up door provides efficient access, making it an excellent choice for businesses in need of both office and warehouse capabilities. Zoned I-2, this space is ideal for light industrial operations.



*Spaces are approximations **Landlord to subtract expenses

ANTHONY PROVENZANO (B), CCIM, SIOR

+1 808 387 3444

aprovenzano@chaneybrooks.com

KELLY A. VEA (S), CCIM

+1 808 489 2703

kvea@chaneybrooks.com

TREVOR BLAKE (S)

+1 808 778 7409

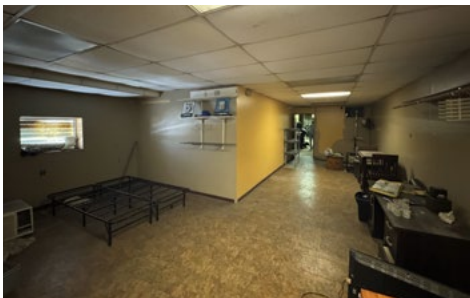
tblake@chaneybrooks.com

ALAHAO WEST

AVAILABLE WAREHOUSE SPACES

UNIT	TOTAL SIZE*	MONTHLY GROSS RENT	AVAILABLE
C	5,540 SF	\$9,307.20	9/1/2025

Unit C offers a spacious layout with a total of 5,540 SF, including 1,752 SF of ground floor space and a generous 3,788 SF mezzanine. The high cube design provides additional vertical storage, and the large roll-up door ensures convenient access for industrial operations. Zoned I-2, this unit is ideal for businesses looking for flexibility in both office and warehouse space.



*Spaces are approximations **Landlord to subtract expenses

ANTHONY PROVENZANO (B), CCIM, SIOR

+1 808 387 3444

aprovenzano@chaneybrooks.com

KELLY A. VEA (S), CCIM

+1 808 489 2703

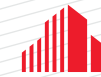
kvea@chaneybrooks.com

TREVOR BLAKE (S)

+1 808 778 7409

tblake@chaneybrooks.com

ALAHAO EAST



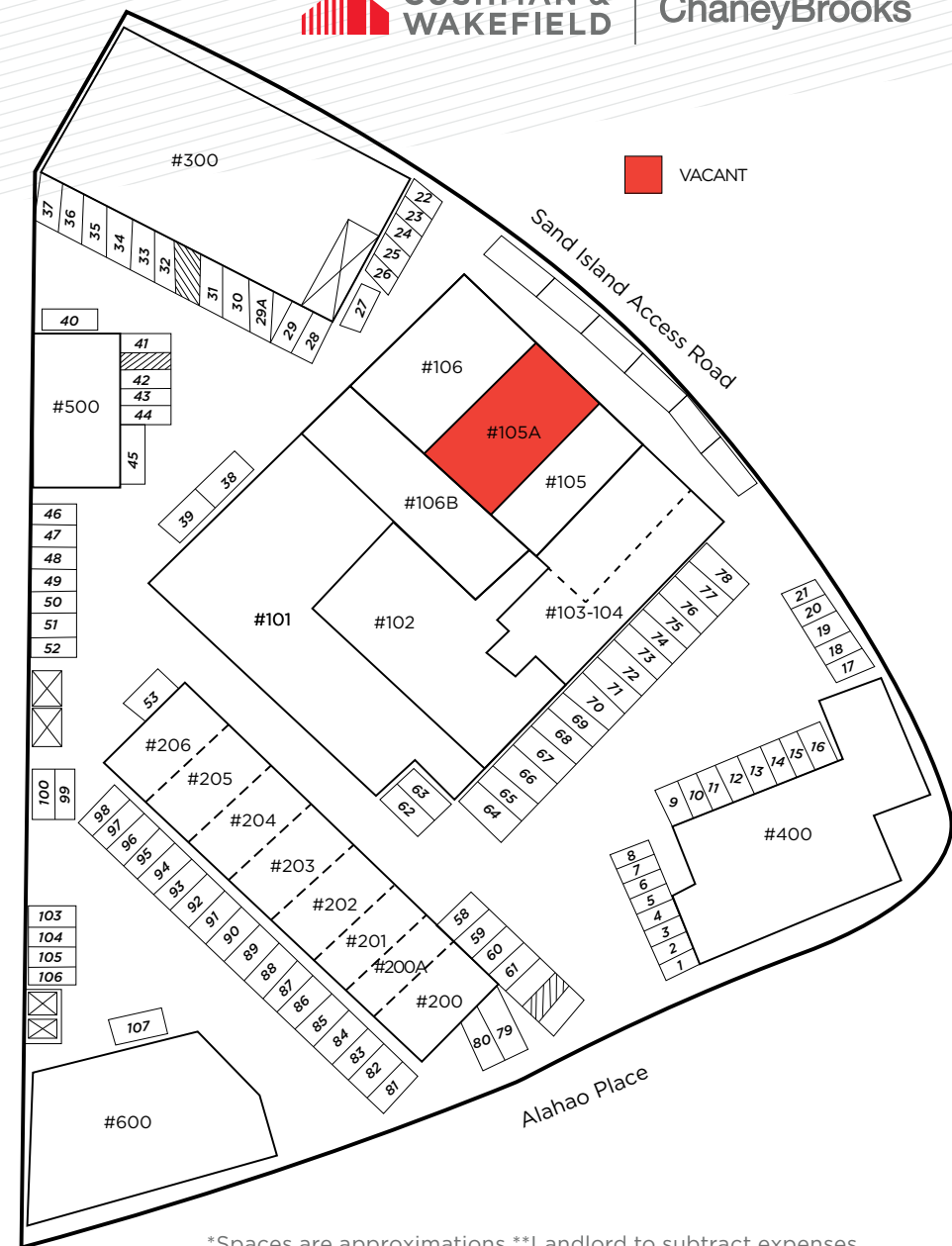
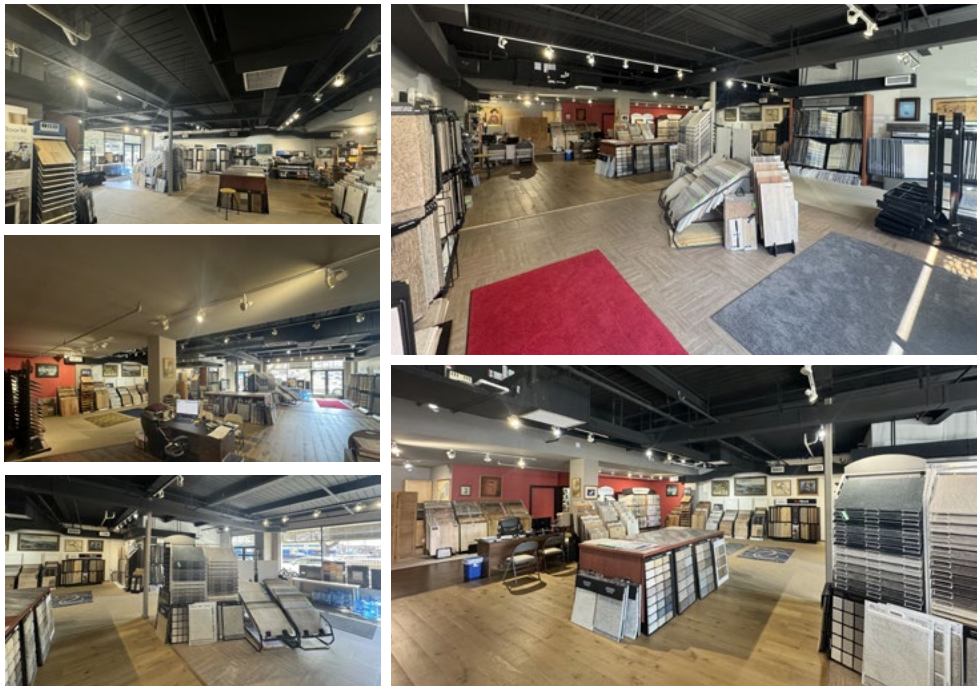
CUSHMAN &
WAKEFIELD

ChaneyBrooks

AVAILABLE OFFICE/RETAIL SPACE

UNIT	TOTAL SIZE*	MONTHLY GROSS RENT	AVAILABLE
105A	2,233 SF	\$4,466.00	Now

Unit 105A offers prime retail space within Alahao Industrial Park, featuring an open floor plan ideal for a variety of retail uses. With prominent window frontage along bustling Sand Island Access Road, this space ensures high visibility. It also includes a dedicated storage room and private restroom. Don't miss the chance to secure this exceptional 2,333 SF retail opportunity!



*Spaces are approximations **Landlord to subtract expenses

ANTHONY PROVENZANO (B), CCIM, SIOR

+1 808 387 3444

aprovenzano@chaneybrooks.com

KELLY A. VEA (S), CCIM

+1 808 489 2703

kvea@chaneybrooks.com

TREVOR BLAKE (S)

+1 808 778 7409

tblake@chaneybrooks.com

ALAHAO EAST



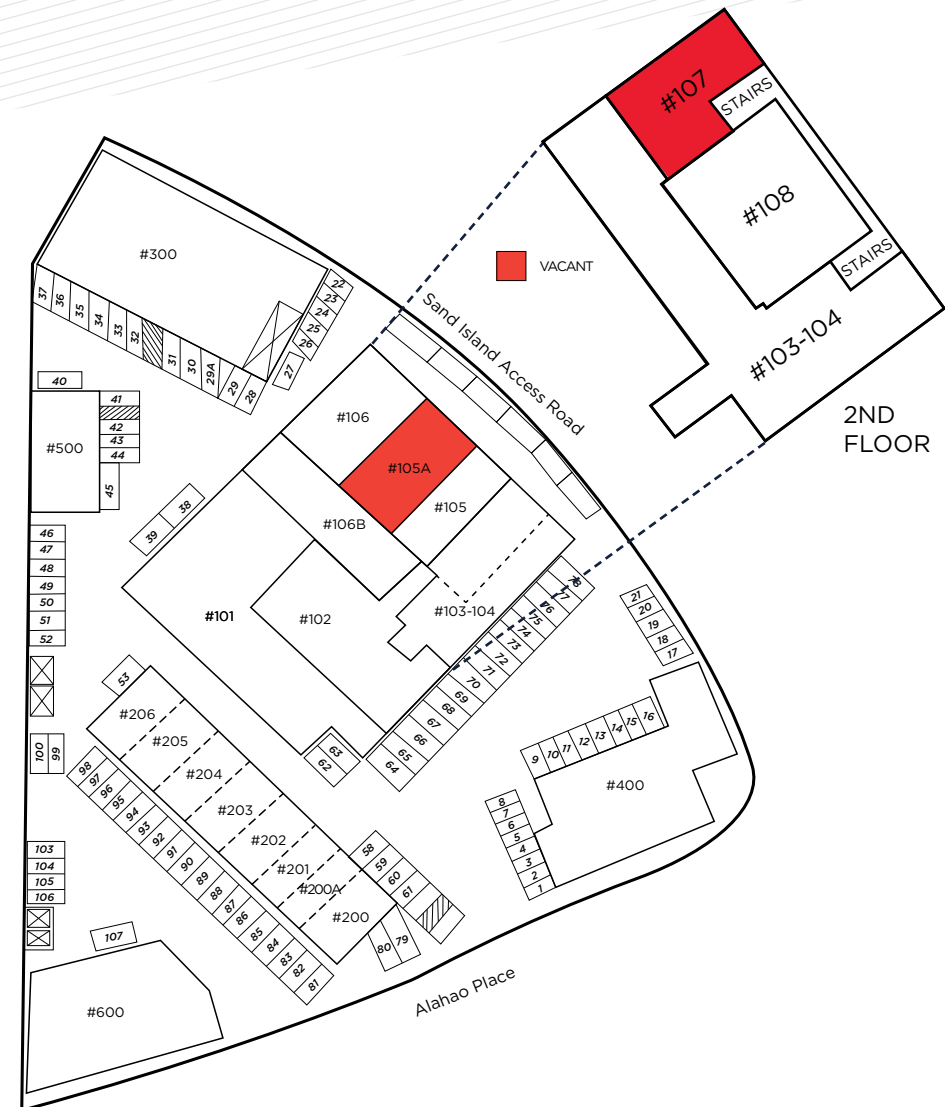
CUSHMAN &
WAKEFIELD

ChaneyBrooks

AVAILABLE RETAIL/OFFICE SPACE

UNIT	TOTAL SIZE*	MONTHLY GROSS RENT
107	942 SF	\$1,648.50

Unit 107 in the Alahao Industrial Park offers a spacious and versatile 942-square-foot layout, perfect for various business needs. The open floor plan and large windows provide ample natural light, creating a bright and welcoming atmosphere. Located on a well-trafficked street, the unit is easily accessible by both private and commercial vehicles, making it an ideal choice for businesses requiring a central and convenient location.



*Spaces are approximations **Landlord to subtract expenses

ANTHONY PROVENZANO (B), CCIM, SIOR

+1 808 387 3444

aprovenzano@chaneybrooks.com

KELLY A. VEA (S), CCIM

+1 808 489 2703

kvea@chaneybrooks.com

TREVOR BLAKE (S)

+1 808 778 7409

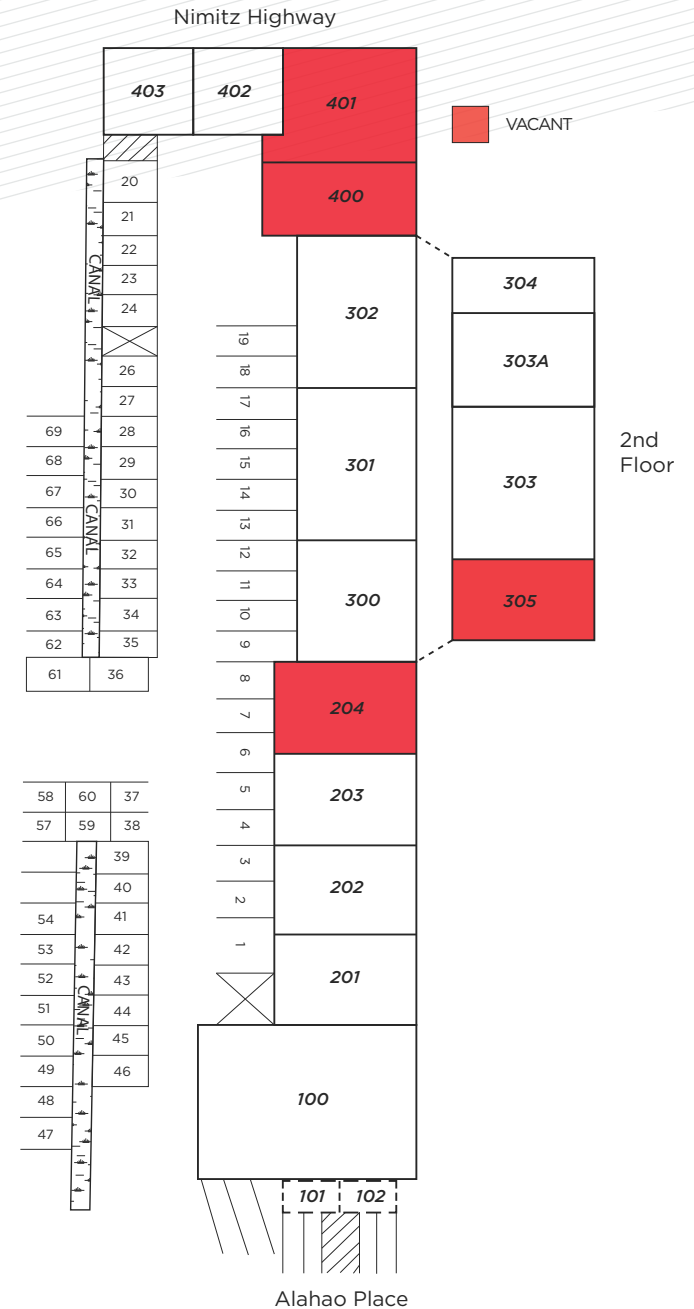
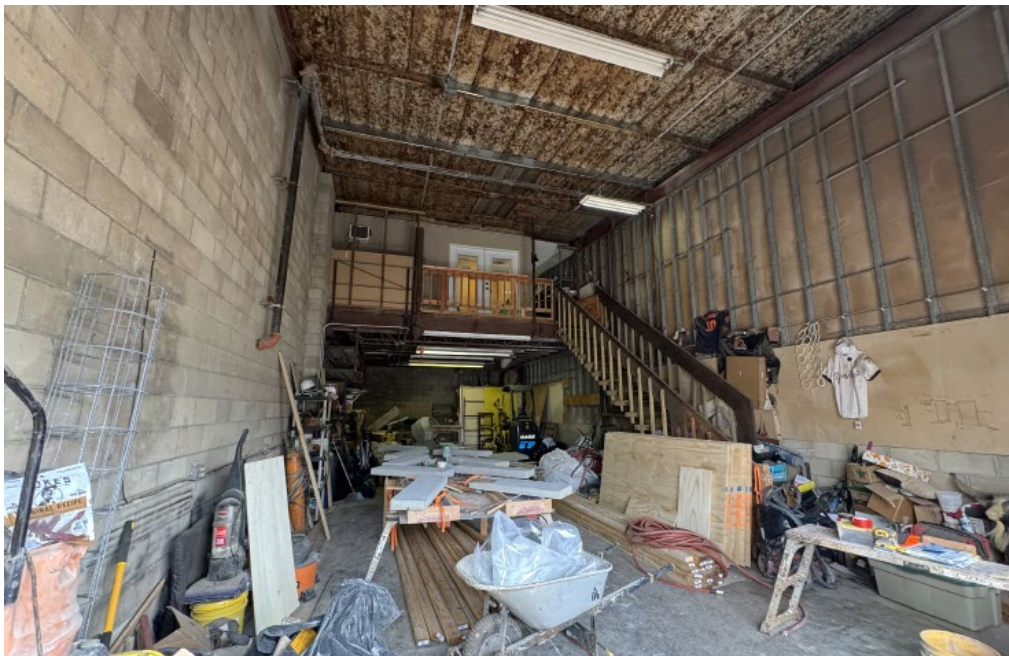
tblake@chaneybrooks.com

ALAHAO MID

AVAILABLE WAREHOUSE SPACES

UNIT	TOTAL SIZE	MONTHLY GROSS RENT
204	1,756 SF	\$3,424.20

Located within Alahao Industrial Park, this unit offers a functional mix of office, mezzanine, and warehouse space. With 1,160 SF of warehouse area, an additional 566 SF of office/mezzanine space, and a roll-up door for easy access, this property provides versatile options for light industrial businesses. The layout is ideal for operations requiring both office and storage space in a centrally located industrial park.



ANTHONY PROVENZANO (B), CCIM, SIOR

+1 808 387 3444

aprovenzano@chaneybrooks.com

KELLY A. VEA (S), CCIM

+1 808 489 2703

kvea@chaneybrooks.com

TREVOR BLAKE (S)

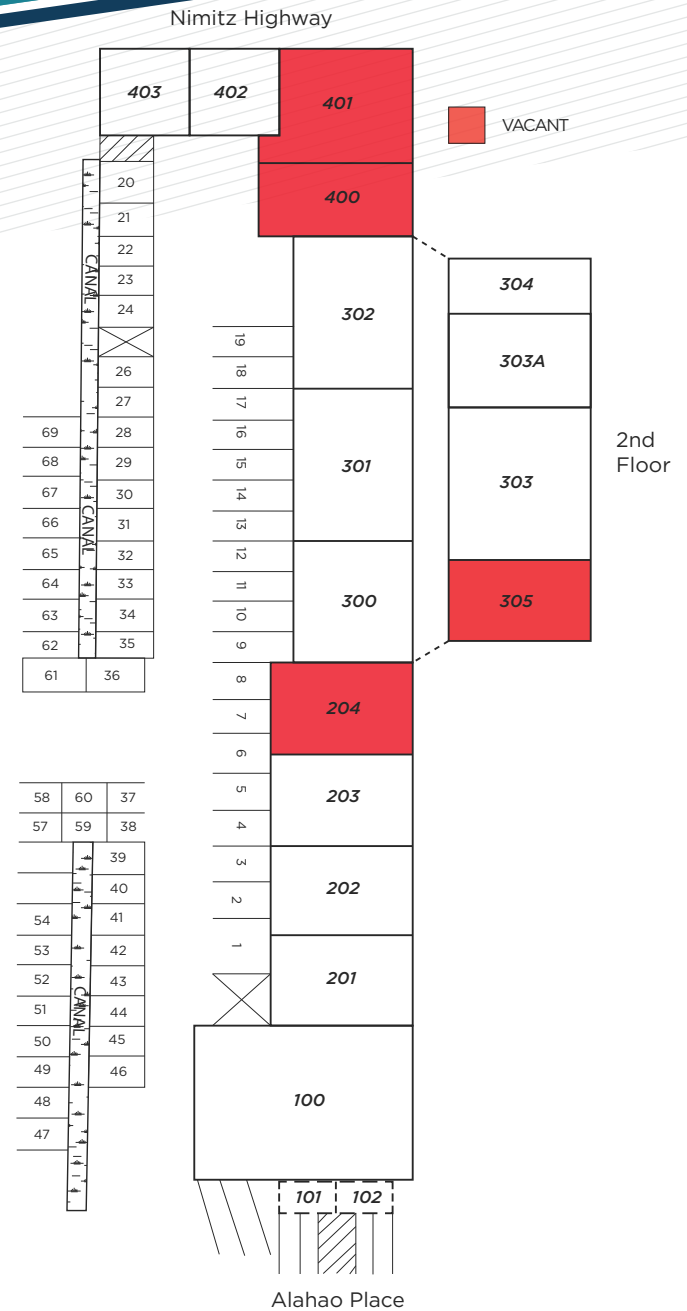
+1 808 778 7409

tblake@chaneybrooks.com

ALAHAO MID

AVAILABLE OFFICE SPACE

UNIT	TOTAL SIZE*	MONTHLY GROSS RENT	VIRTUAL TOUR
305	828 SF	\$1,407.60	



*Spaces are approximations **Landlord to subtract expenses

ANTHONY PROVENZANO (B), CCIM, SIOR

+1 808 387 3444

aprovenzano@chaneybrooks.com

KELLY A. VEA (S), CCIM

+1 808 489 2703

kvea@chaneybrooks.com

TREVOR BLAKE (S)

+1 808 778 7409

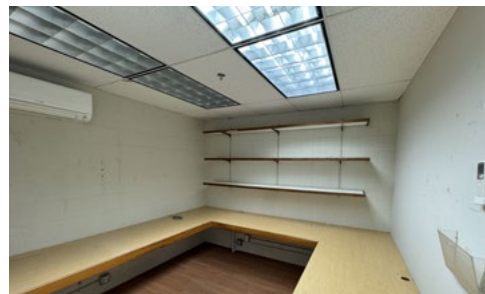
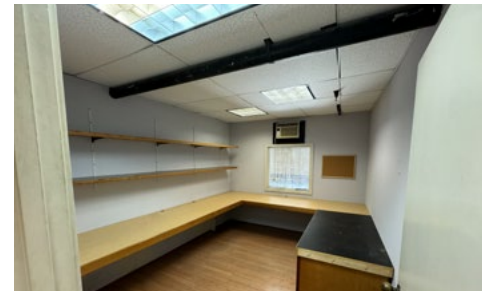
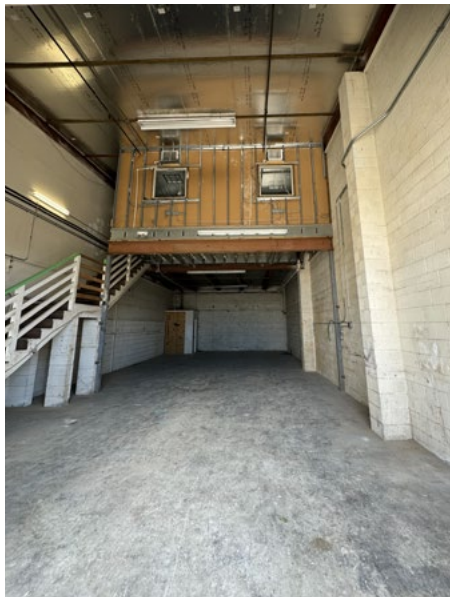
tblake@chaneybrooks.com

ALAHAO MID

AVAILABLE WAREHOUSE SPACES

UNIT	TOTAL SIZE*	FLOOR SIZE	MEZZANINE SIZE	MONTHLY GROSS RENT
400	2,245 SF	1,393 SF	852 SF	\$4,377.75

Unit 400 at Alahao Industrial Park offers 2,245 square feet of flexible industrial space, including a 1,393-square-foot ground floor and an 852-square-foot mezzanine. The unit features a large open floor plan with high ceilings, sprinklers, and a built-out office area with multiple rooms, shelving, and desks. The space is easily accessible via a large roll-up door, perfect for a variety of businesses. This unit provides a versatile and functional environment for various business operations.



ANTHONY PROVENZANO (B), CCIM, SIOR

+1 808 387 3444

aprovenzano@chaneybrooks.com

KELLY A. VEA (S), CCIM

+1 808 489 2703

kvea@chaneybrooks.com

TREVOR BLAKE (S)

+1 808 778 7409

tblake@chaneybrooks.com

ALAHAO MID

AVAILABLE WAREHOUSE SPACES

UNIT	GROUND FLOOR SIZE	PRICE PSF	CAM PSF
401	3,866 SF	\$1.00	\$0.67



Unit 401 at Alahao Industrial Park offers a substantial 7,020 square feet of versatile industrial space, including a **3,866-square-foot ground floor** and a **3,154-square-foot mezzanine**. The ground level features a high-ceilinged, open floor plan ideal for a range of industrial uses, while the spacious mezzanine is well-suited for additional storage or workstations — **offered at no additional charge**. The unit is easily accessible via a large roll-up door, providing convenience for frequent shipments or deliveries. **Priced at \$1.67 per square foot per month for the ground floor**, Unit 401 delivers excellent value and flexibility for a variety of operational needs.

ANTHONY PROVENZANO (B), CCIM, SIOR

+1 808 387 3444

aprovenzano@chaneybrooks.com

KELLY A. VEA (S), CCIM

+1 808 489 2703

kvea@chaneybrooks.com

TREVOR BLAKE (S)

+1 808 778 7409

tblake@chaneybrooks.com



CONTACT US FOR MORE INFORMATION

ANTHONY PROVENZANO (B), CCIM, SIOR

+1 808 387 3444

aprovenzano@chaneybrooks.com

RB-22101

KELLY A. VEA (S), CCIM

+1 808 489 2703

kvea@chaneybrooks.com

RS-79079

TREVOR BLAKE (S)

+1 808 778 7409

tblake@chaneybrooks.com

RS-87251



**CUSHMAN &
WAKEFIELD**

ChaneyBrooks

Independently Owned and Operated / A Member of the Cushman & Wakefield Alliance

©2024 Cushman & Wakefield ChaneyBrooks. All rights reserved. The information contained in this communication is strictly confidential. This information has been obtained from sources believed to be reliable but has not been verified. NO WARRANTY OR REPRESENTATION, EXPRESS OR IMPLIED, IS MADE AS TO THE CONDITION OF THE PROPERTY (OR PROPERTIES) REFERENCED HEREIN OR AS TO THE ACCURACY OR COMPLETENESS OF THE INFORMATION CONTAINED HEREIN, AND SAME IS SUBMITTED SUBJECT TO ERRORS, OMISSIONS, CHANGE OF PRICE, RENTAL OR OTHER CONDITIONS, WITHDRAWAL WITHOUT NOTICE, AND TO ANY SPECIAL LISTING CONDITIONS IMPOSED BY THE PROPERTY OWNER(S). ANY PROJECTIONS, OPINIONS OR ESTIMATES ARE SUBJECT TO UNCERTAINTY AND DO NOT SIGNIFY CURRENT OR FUTURE PROPERTY PERFORMANCE.

1440 Kapiolani Boulevard Suite 1010
Honolulu, Hawaii 96814
RB-17805

www.chaneybrooks.com