

AVAILABLE SPACES FOR LEASE

KALAHEO CENTER

2-2436 KAUMUALII HWY, KALAHEO, HI 96741



HIGHLIGHTS

- Prime neighborhood center in Kalaheo
- High visibility along Kaumualii Highway
- Convenient Access
- Large parking field

Contact

ARACELI BENSON (S)
Real Estate Advisor
+1 808 246 0634
abenson@chaneybrooks.com
RB-24043

ANTHONY PROVENZANO (B), CCIM, SIOR
Senior Vice President
+1 808 387 3444
aprovenzano@chaneybrooks.com
RB-22101

- 4303 Rice St, Suite C4, Lihue, Hawaii 96766
- 1440 Kapiolani Blvd, Suite 1010, Honolulu, Hawaii 96814
RB-17805

AVAILABLE SPACES FOR LEASE KALAHEO CENTER

2-2436 KAUMUALII HWY, KALAHEO, HI 96741



CUSHMAN &
WAKEFIELD

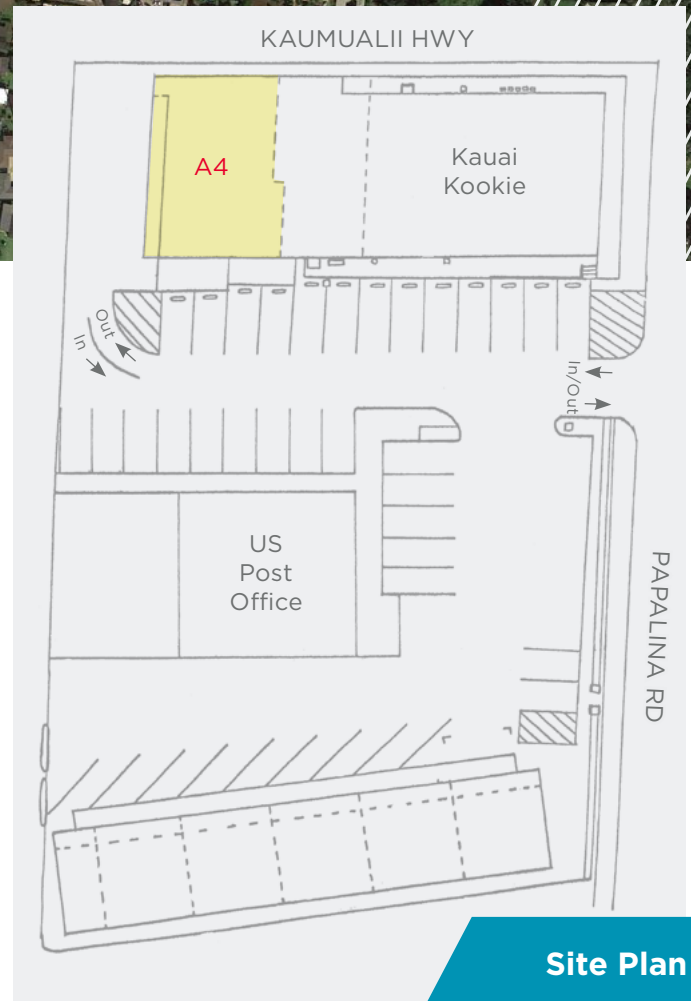
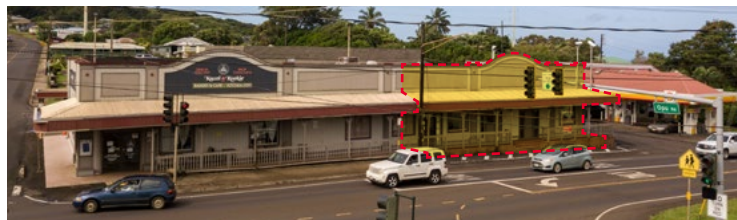
ChaneyBrooks



PROPERTY DETAILS

Available Spaces

• A-4	1,410 SF
Base Rent	\$2.45/SF
Operating Expense	\$1.00/SF per month
Term	3+ years
Total GLA	14,689 SF
Zoning	General Commercial
Anchor Tenants	US Post Office, Kauai Kookie



Site Plan

Contact

ARACELI BENSON (B)

Real Estate Advisor
+1 808 246 0634
abenson@chaneybrooks.com

ANTHONY PROVENZANO (B), CCIM, SIOR

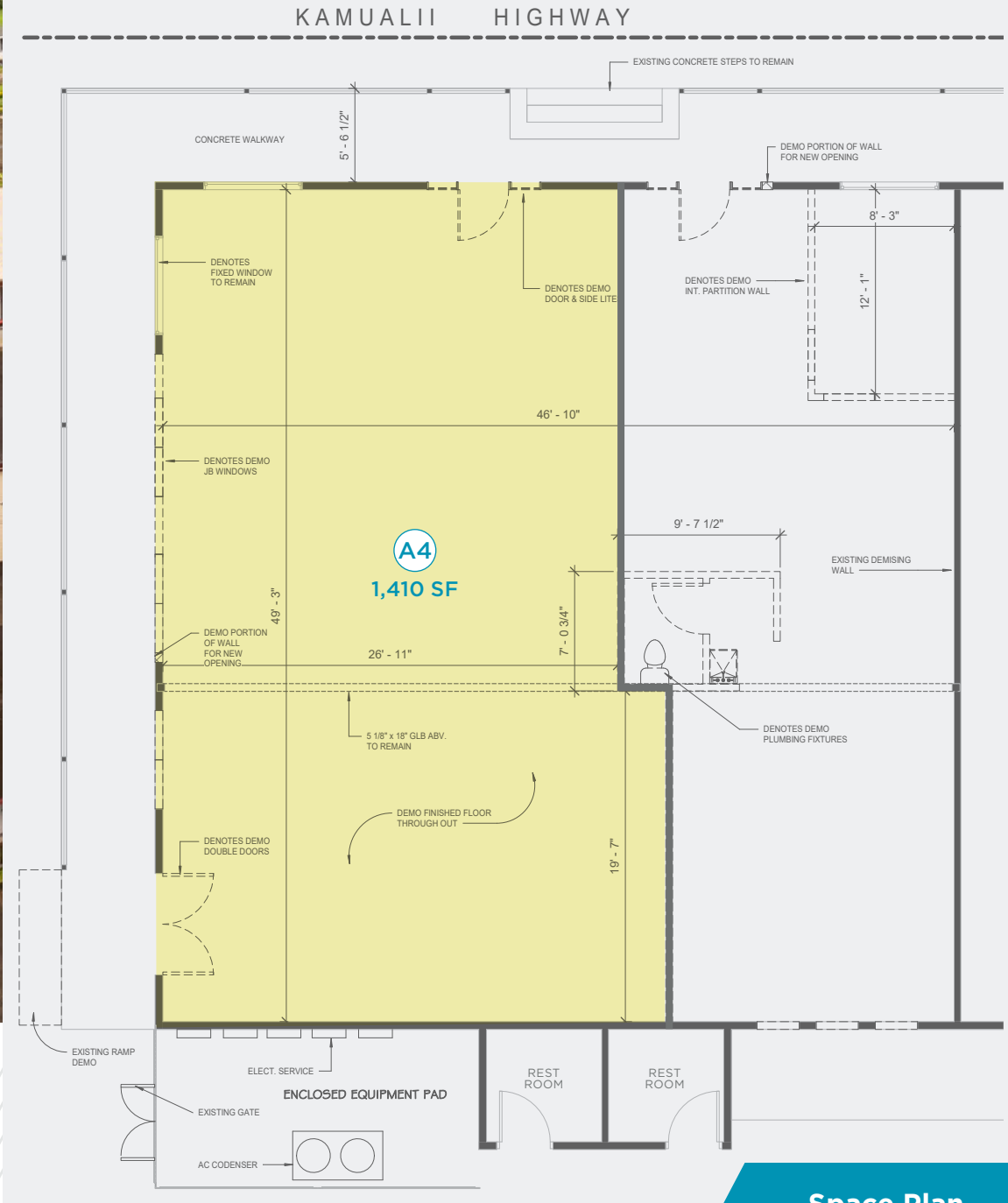
Senior Vice President
+1 808 387 3444
aprovenzano@chaneybrooks.com

- 4303 Rice St, Suite C4, Lihue, Hawaii 96766
 - 1440 Kapiolani Blvd, Suite 1010, Honolulu, Hawaii 96814
- www.chaneybrooks.com

AVAILABLE SPACES FOR LEASE

KALAHEO CENTER

2-2436 KAUMUALII HWY, KALAHEO, HI 96741



Space Plan

Contact

ARACELI BENSON (S)
Real Estate Advisor
+1 808 246 0634
abenson@chaneybrooks.com

ANTHONY PROVENZANO (B), CCIM, SIOR
Senior Vice President
+1 808 387 3444
aprovenzano@chaneybrooks.com

- 4303 Rice St, Suite C4, Lihue, Hawaii 96766
- 1440 Kapiolani Blvd, Suite 1010, Honolulu, Hawaii 96814

www.chaneybrooks.com