

# AVAILABLE SPACES FOR LEASE

## KALAHEO CENTER

2-2436 KAUMUALII HWY, KALAHEO, HI 96741



CUSHMAN &  
WAKEFIELD

ChaneyBrooks



### HIGHLIGHTS

- Prime neighborhood center in Kalaheo
- High visibility along Kaumualii Highway
- Convenient Access
- Large parking field

### Contact

For showings, please contact Danelle.

**DANELLE L. SANTOS (S)**  
Real Estate Advisor  
+1 808 246 0634  
dsantos@chaneybrooks.com  
RS-87052

**KELLY A. VEA (S), CCIM**  
Vice President  
+1 808 489 2703  
kvea@chaneybrooks.com  
RS-79079

**ANTHONY PROVENZANO (B), CCIM, SIOR**  
Executive Vice President  
+1 808 387 3444  
aprovenzano@chaneybrooks.com  
RB-22101

Independently Owned and Operated / A Member of the Cushman & Wakefield Alliance  
©2025 Cushman & Wakefield ChaneyBrooks. All rights reserved. The information contained in this communication is strictly confidential. This information has been obtained from sources believed to be reliable but has not been verified. NO WARRANTY OR REPRESENTATION, EXPRESS OR IMPLIED, IS MADE AS TO THE CONDITION OF THE PROPERTY (OR PROPERTIES) REFERENCED HEREIN OR AS TO THE ACCURACY OR COMPLETENESS OF THE INFORMATION CONTAINED HEREIN, AND SAME IS SUBMITTED SUBJECT TO ERRORS, OMISSIONS, CHANGE OF PRICE, RENTAL OR OTHER CONDITIONS, WITHDRAWAL WITHOUT NOTICE, AND TO ANY SPECIAL LISTING CONDITIONS IMPOSED BY THE PROPERTY OWNER(S). ANY PROJECTIONS, OPINIONS OR ESTIMATES ARE SUBJECT TO UNCERTAINTY AND DO NOT SIGNIFY CURRENT OR FUTURE PROPERTY PERFORMANCE.

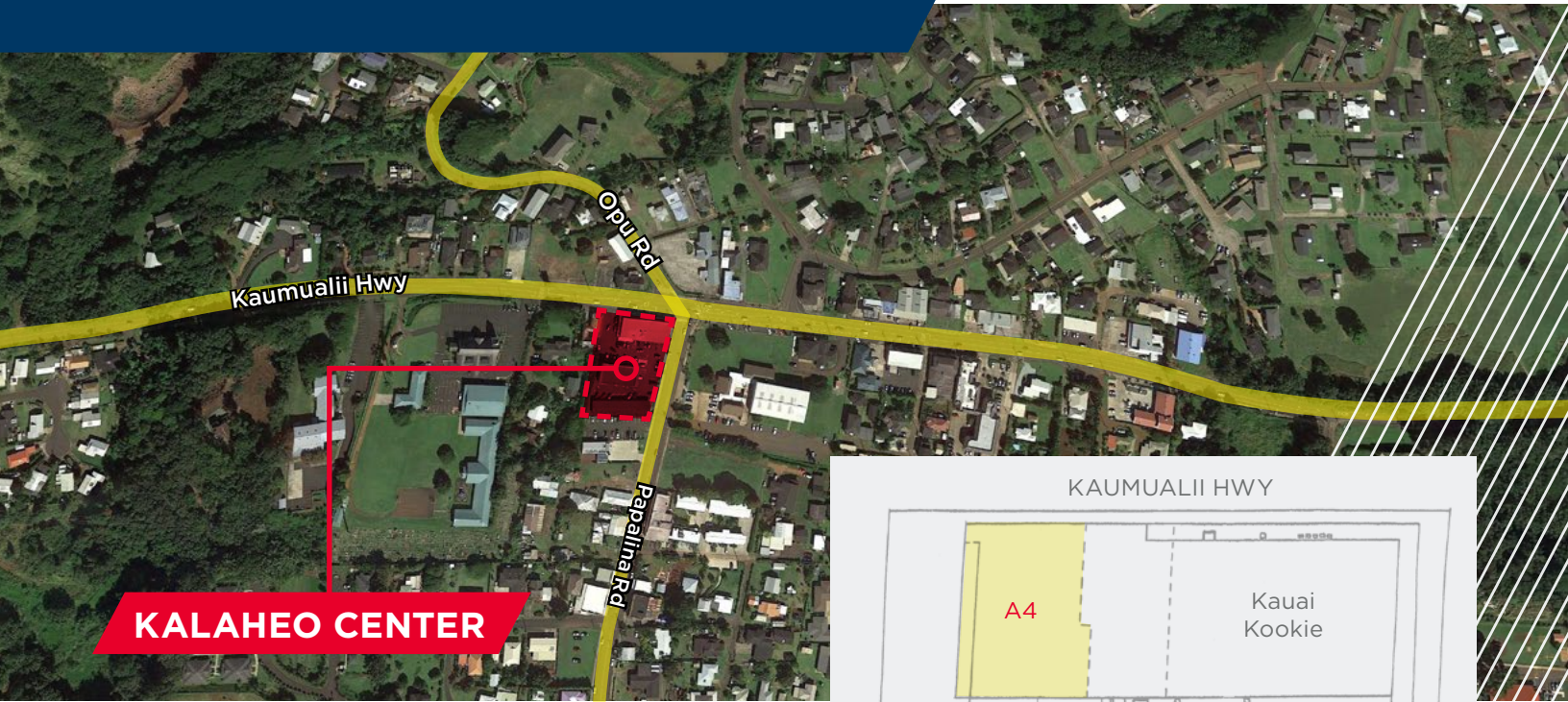
# AVAILABLE SPACES FOR LEASE KALAHEO CENTER

2-2436 KAUMUALII HWY, KALAHEO, HI 96741



CUSHMAN &  
WAKEFIELD

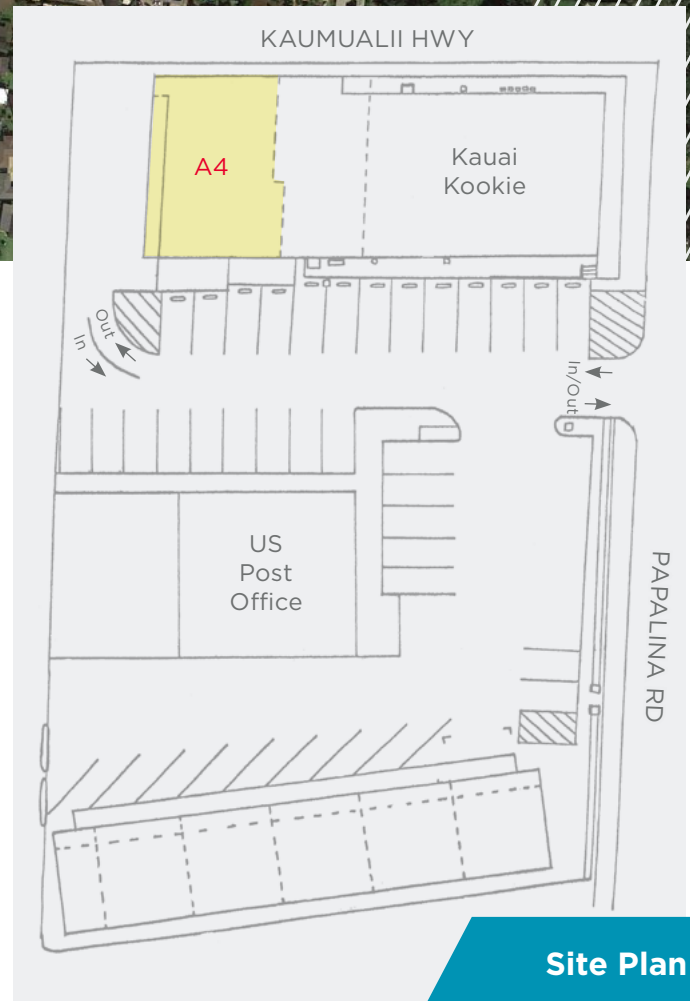
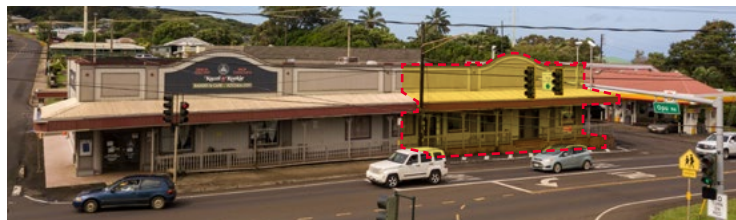
ChaneyBrooks



## PROPERTY DETAILS

### Available Spaces

• A-4	1,410 SF
Base Rent	\$2.45/SF
Operating Expense	\$1.00/SF per month
Term	3+ years
Total GLA	14,689 SF
Zoning	General Commercial
Anchor Tenants	US Post Office, Kauai Kookie



## Contact

For showings, please contact Danelle.

**DANELLE L. SANTOS (S)**  
Real Estate Advisor  
+1 808 246 0634  
dsantos@chaneybrooks.com  
RS-87052

**KELLY A. VEA (S), CCIM**  
Vice President  
+1 808 489 2703  
kvea@chaneybrooks.com  
RS-79079

**ANTHONY PROVENZANO (B), CCIM, SIOR**  
Senior Vice President  
+1 808 387 3444  
aprovenzano@chaneybrooks.com  
RB-22101

Independently Owned and Operated / A Member of the Cushman & Wakefield Alliance  
©2025 Cushman & Wakefield ChaneyBrooks. All rights reserved. The information contained in this communication is strictly confidential. This information has been obtained from sources believed to be reliable but has not been verified. NO WARRANTY OR REPRESENTATION, EXPRESS OR IMPLIED, IS MADE AS TO THE CONDITION OF THE PROPERTY (OR PROPERTIES) REFERENCED HEREIN OR AS TO THE ACCURACY OR COMPLETENESS OF THE INFORMATION CONTAINED HEREIN, AND SAME IS SUBMITTED SUBJECT TO ERRORS, OMISSIONS, CHANGE OF PRICE, RENTAL OR OTHER CONDITIONS, WITHDRAWAL WITHOUT NOTICE, AND TO ANY SPECIAL LISTING CONDITIONS IMPOSED BY THE PROPERTY OWNER(S). ANY PROJECTIONS, OPINIONS OR ESTIMATES ARE SUBJECT TO UNCERTAINTY AND DO NOT SIGNIFY CURRENT OR FUTURE PROPERTY PERFORMANCE.



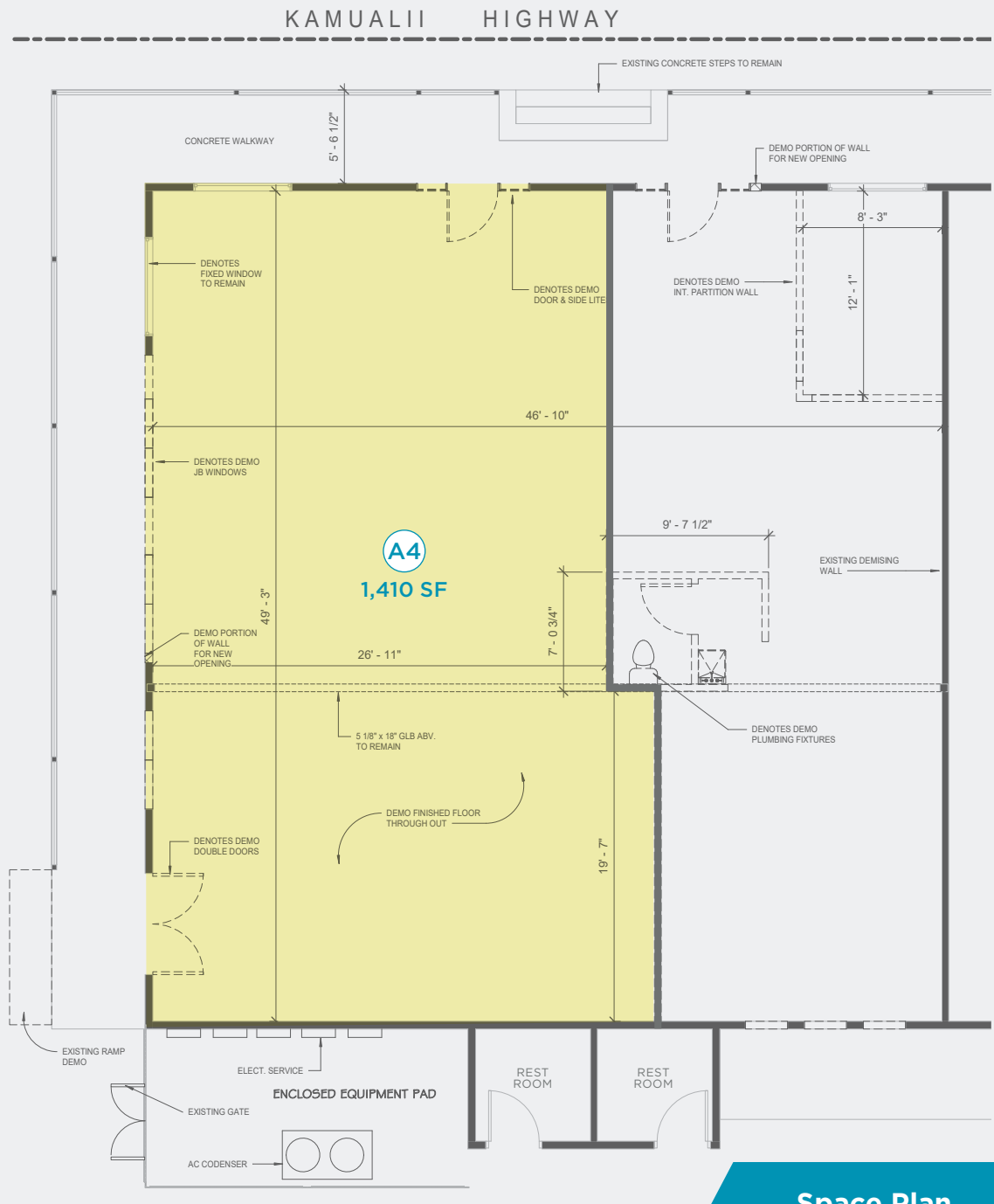
# AVAILABLE SPACES FOR LEASE KALAHEO CENTER

2-2436 KAUMUALII HWY, KALAHEO, HI 96741



CUSHMAN &  
WAKEFIELD

ChaneyBrooks



Space Plan

## Contact

For showings, please contact Danelle.

### DANELLE L. SANTOS (S)

Real Estate Advisor  
+1 808 246 0634  
dsantos@chaneybrooks.com  
RS-87052

### KELLY A. VEA (S), CCIM

Vice President  
+1 808 489 2703  
kvea@chaneybrooks.com  
RS-79079

### ANTHONY PROVENZANO (B), CCIM, SIOR

Senior Vice President  
+1 808 387 3444  
aprovenzano@chaneybrooks.com  
RB-22101

4303 Rice St, Suite C4, Lihue, Hawaii 96766 | Main Office: 1440 Kapiolani Blvd, Suite 1010, Honolulu, Hawaii 96814 | RB-17805

[www.chaneybrooks.com](http://www.chaneybrooks.com)

Independently Owned and Operated / A Member of the Cushman & Wakefield Alliance

©2025 Cushman & Wakefield ChaneyBrooks. All rights reserved. The information contained in this communication is strictly confidential. This information has been obtained from sources believed to be reliable but has not been verified. NO WARRANTY OR REPRESENTATION, EXPRESS OR IMPLIED, IS MADE AS TO THE CONDITION OF THE PROPERTY (OR PROPERTIES) REFERENCED HEREIN OR AS TO THE ACCURACY OR COMPLETENESS OF THE INFORMATION CONTAINED HEREIN, AND SAME IS SUBMITTED SUBJECT TO ERRORS, OMISSIONS, CHANGE OF PRICE, RENTAL OR OTHER CONDITIONS, WITHDRAWAL WITHOUT NOTICE, AND TO ANY SPECIAL LISTING CONDITIONS IMPOSED BY THE PROPERTY OWNER(S). ANY PROJECTIONS, OPINIONS OR ESTIMATES ARE SUBJECT TO UNCERTAINTY AND DO NOT SIGNIFY CURRENT OR FUTURE PROPERTY PERFORMANCE.