

TURN-KEY DENTAL OFFICE

1100 WARD AVENUE, SUITE 1015

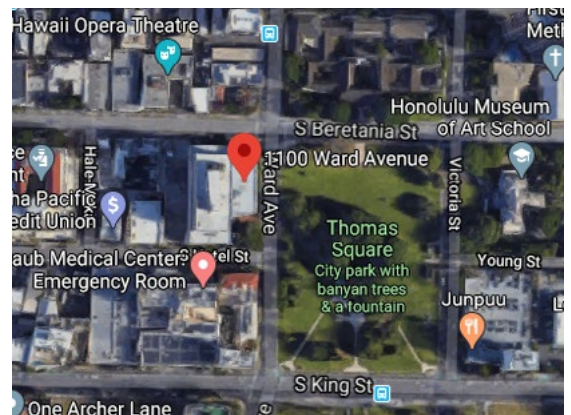
1,720 SF / Negotiable Rent

FOR SUBLEASE



PROPERTY HIGHLIGHTS

- » Four (4) operatories w/ option for 5th
- » Sterilization lab, break room, consultation room, reception area, doctors office with separate entry, restroom, and washer & dryer
- » Inclusive of dental equipment
- » Term until 7/31/2025
- » Operating expenses \$1.58/SF
- » Validated parking
- » Five (5) unreserved parking stalls
- » Two (2) reserved parking stalls



RYAN K. SAKAGUCHI (B)

Senior Vice President
+1 808 799 6509
rsakaguchi@chaneybrooks.com

KEITH R. GURNEY (B)

Real Estate Advisor
+1 808 396 8788
kgurney@chaneybrooks.com



CUSHMAN &
WAKEFIELD

ChaneyBrooks

1440 Kapiolani Blvd., Suite 1010 | Honolulu, HI 96814
Main +1 808 544 1600 | Fax +1 808 544 9574
cushmanwakefield.com | chaneybrooks.com

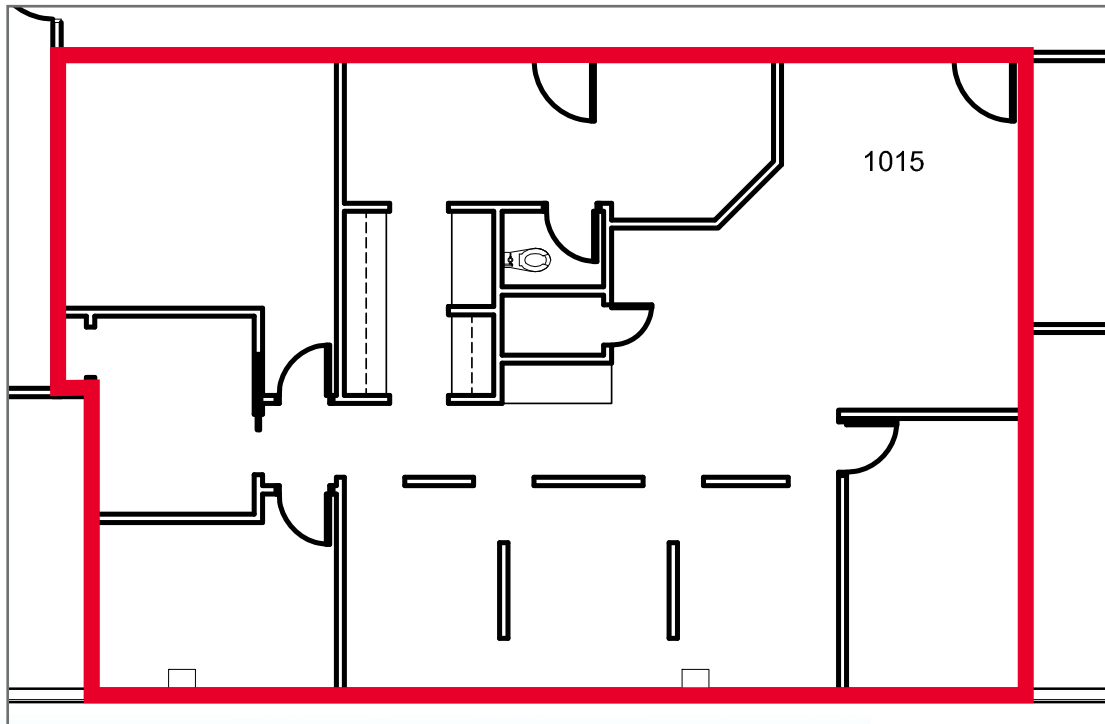
CLASS A MEDICAL BUILDING

1100 WARD AVENUE, SUITE 1015

1,720 SF / Negotiable Rent

FOR SUBLEASE

SITE PLAN



RYAN K. SAKAGUCHI (B)
Senior Vice President
+1 808 799 6509
rsakaguchi@chaneybrooks.com

KEITH R. GURNEY (B)
Real Estate Advisor
+1 808 396 8788
kgurney@chaneybrooks.com



**CUSHMAN &
WAKEFIELD**

ChaneyBrooks

1440 Kapiolani Blvd., Suite 1010 | Honolulu, HI 96814
Main +1 808 544 1600 | Fax +1 808 544 9574
cushmanwakefield.com | chaneybrooks.com

©2020 Cushman & Wakefield. All rights reserved. The information contained in this communication is strictly confidential. This information has been obtained from sources believed to be reliable but has not been verified. No warranty or representation, express or implied, is made as to the condition of the property (or properties) referenced herein or as to the accuracy or completeness of the information contained herein, and same is submitted subject to errors, omissions, change of price, rental or other conditions, withdrawal without notice, and to any special listing conditions imposed by the property owner(s). Any projections, opinions or estimates are subject to uncertainty and do not signify current or future property performance.