

OFFICE SPACE FOR LEASE

# BANK OF HAWAII WAIKIKI CENTER

2155 Kalakaua Avenue  
Honolulu, HI 96815

*Landmark Class A  
Office Building  
in Waikiki*

VISIT PROPERTY WEBSITE

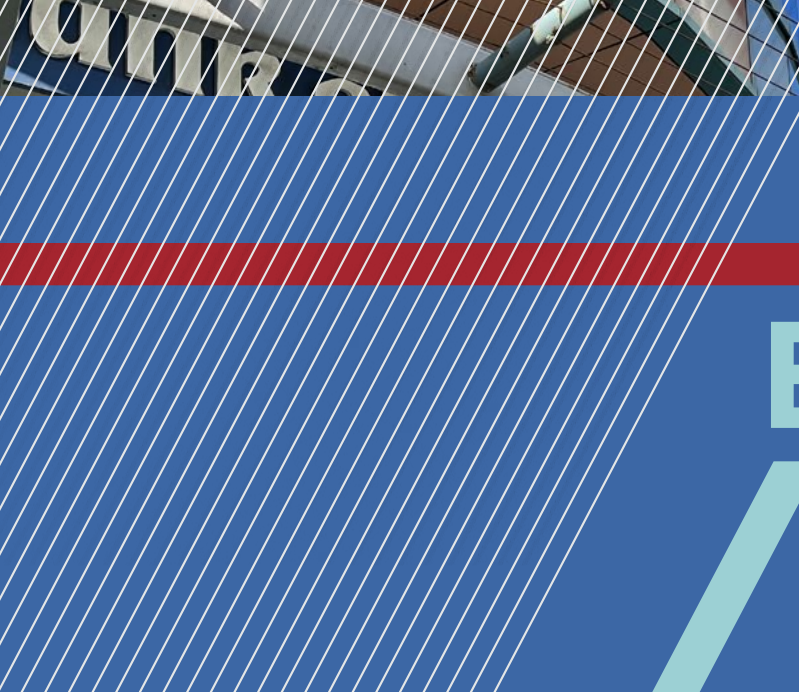
PROPERTY VIDEO



CUSHMAN &  
WAKEFIELD

ChaneyBrooks

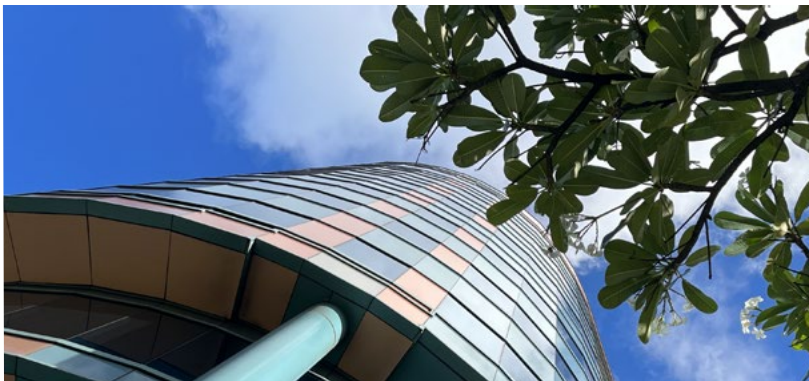
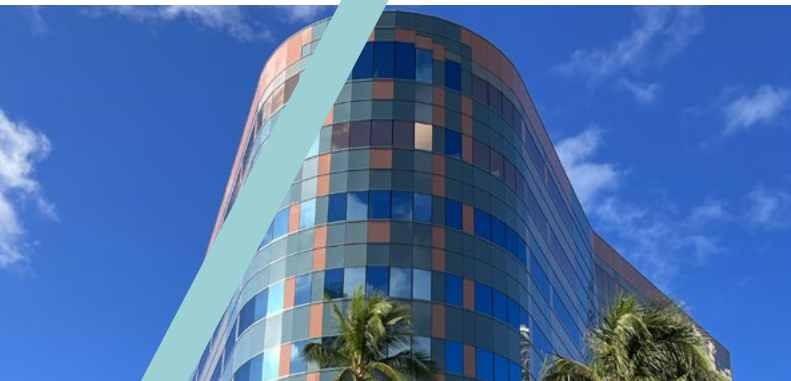




# About the BUILDING

## Property Details

|                       |   |
|-----------------------|---|
| <b>ADDRESS</b>        | 2155 Kalakaua Avenue<br>Honolulu, HI 96815            |
| <b>ZONING</b>         | Resort-Commercial                                     |
| <b>BUILDING CLASS</b> | Class A   |
| <b>BASE RENT</b>      | Negotiable  |
| <b>TERM</b>           | 3-5 Years   |
| <b>CAM</b>            | \$2.43/RSF/Mo (2025)<br>Subject to Annual Adjustments |
| <b>A/C HOURS</b>      | 6:30am-5:00pm,<br>Mon - Sun & Holidays                |
| <b>PARKING</b>        |   |
| Parking Ratio         | 1/700 SF  |
| Reserved Stalls       | \$275/Month (Includes HI GET)                         |
| Unreserved Stalls     | \$175/Month (Includes HI GET)                         |



MAJOR  
TEANTS





**BANK OF HAWAII WAIKIKI CENTER** is a 152,772 rentable square foot Class A office building strategically located at the entrance to Waikiki. The striking blue and coral colors welcome visitors to the world-famous Kalakaua Avenue in Waikiki. This landmark building, standing nine stories tall, was designed to boldly stand out as a professional and prestigious business location.

Positioned on the corner of Kalakaua Avenue and Beach Walk, Bank of Hawaii Waikiki Center sits across Luxury Row and 280 Beachwalk and is minutes away from the Waikiki's main destinations. Waikiki is Honolulu's premier "urban retail" market and one of the foremost travel and shopping destinations in the world. Bank of Hawaii Waikiki Center is the perfect destination for all businesses, small to large, whether you are looking for proximity to the Waikiki market or a location that mixes professional with quintessential Hawaii views.



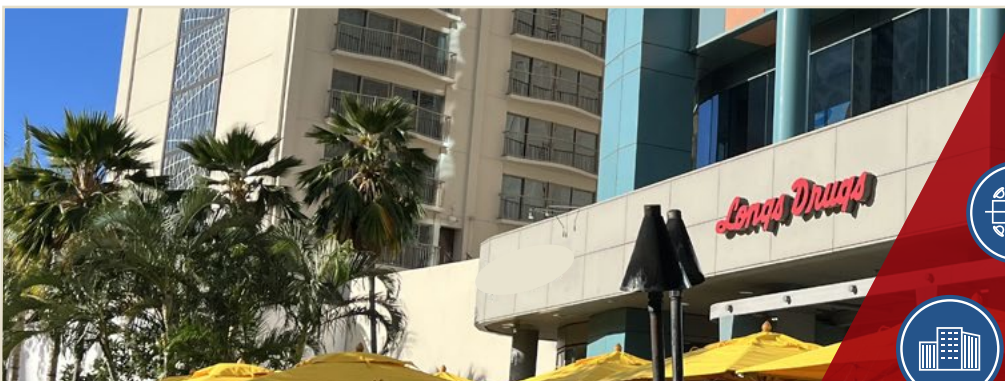
**24/7**  
SECURITY



**3**  
PASSENGER  
ELEVATORS



**1**  
DEDICATED SERVICE  
ELEVATOR



**225**  
SECURED COVERED  
PARKING STALLS



**40,256 SF**  
TOTAL LAND AREA



**152,772 SF**  
TOTAL RENTABLE SIZE



## Building Details





- H1 EAST ON RAMP
- H1 WEST ON RAMP
- H1 WEST OFF RAMP
- H1 EAST OFF RAMP



**PARKING**

Four levels of covered parking with easy access from Beach Walk

**EV CHARGING STATION**

Parking lot features an EV Charging Station

**EXTERIOR**

Colored Glass Curtain

**CONNECTIVITY**

Fiber/T-1 lines, Hawaiian Telcom, Servpac, Spectrum/Oceanic Cable, Hawaii Dialogix Technology

**HVAC SYSTEM**

- » (2) 300 Tons Carrier Water Cooled Chillers
- » (1) 100 Ton Trane Chiller

**AMENITIES**

- » Conference Room - can be reserved by tenants for meetings and/or events.
- » Laundry Room - Located in the basement makes it convenient for businesses that have regular laundry needs.
- » Longs Drugs and Bank of Hawaii located on the ground floor.

**CONTACT INFORMATION**

**ALLEN MASAHARU YAMAGUCHI (S)**

Real Estate Advisor  
+1 808 544 9517  
ayamaguchi@chaneybrooks.com

**IAN MONTGOMERY (S)**

Real Estate Advisor  
+1 808 421 8778  
imontgomery@chaneybrooks.com

**KOHEI HAKAMADA (B)**

Senior Vice President  
+1 808 544 9510  
khakamada@chaneybrooks.com



1440 Kapiolani Blvd., Suite 1010 | Honolulu, HI 96814 | Main +1 808 544 1600 | Fax +1 808 544 9574

©2023 CUSHMAN & WAKEFIELD CHANEYBROOKS. NO WARRANTY OR REPRESENTATION, EXPRESS OR IMPLIED, IS MADE TO THE ACCURACY OR COMPLETENESS OF THE INFORMATION CONTAINED HEREIN, AND SAME IS SUBMITTED SUBJECT TO ERRORS, OMISSIONS, CHANGE OF PRICE, RENTAL OR OTHER CONDITIONS, WITHDRAWAL WITHOUT NOTICE, AND TO ANY SPECIAL LISTING CONDITIONS IMPOSED BY THE PROPERTY OWNER(S). AS APPLICABLE, WE MAKE NO REPRESENTATION AS TO THE CONDITION OF THE PROPERTY (OR PROPERTIES) IN QUESTION.