

1357 KAPIOLANI BOULEVARD

Honolulu, HI 96814

*Class A Office Space
For Lease*



**CUSHMAN &
WAKEFIELD**

ChaneyBrooks

About the BUILDING



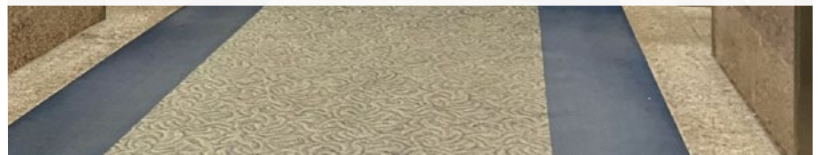
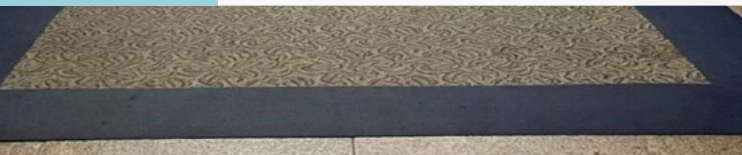
PROPERTY DETAILS

Base Rent
Negotiable

CAM
Estimated at
\$2.12/SF/MO

Parking Stalls
1 per 400 SF
Leased

Validation Rates
Unreserved: \$136.13/Stall/Mo
Reserved: \$188.48/Stall/Mo



1357 Kapiolani is a 150,647 rentable square foot Class A office building strategically located between Downtown Honolulu's financial district and Waikiki. Positioned on the corner of Kapiolani Boulevard and Kona Iki Street, 1357 offers excellent accessibility to Ala Moana Center, the largest open air shopping center in the world, major thoroughfares, and public transportation. 1357 Kapiolani holds the perfect business location offering unbeatable parking and flexible layouts, suiting a variety of small to large scaled companies.



Building Hours
Mon-Fri From 7AM to 6PM
Sat 8AM to 1PM

**After Hours
A/C**
\$40 Per Hour
for 2025

*Ideally located
on Kapiolani
Boulevard,
between
Waikiki and
Honolulu's
financial district*





**CUSHMAN &
WAKEFIELD**

ChaneyBrooks

CONTACT

IAN MONTGOMERY (S)

Real Estate Advisor
808-421-8778 Direct
imontgomery@chaneybrooks.com

KOHEI HAKAMADA (B)

Senior Vice President
808-544-9510 Direct
khakamada@chaneybrooks.com

©2026 Cushman & Wakefield ChaneyBrooks. All rights reserved. The information contained in this communication is strictly confidential. This information has been obtained from sources believed to be reliable but has not been verified. NO WARRANTY OR REPRESENTATION, EXPRESS OR IMPLIED, IS MADE AS TO THE CONDITION OF THE PROPERTY (OR PROPERTIES) REFERENCED HEREIN OR AS TO THE ACCURACY OR COMPLETENESS OF THE INFORMATION CONTAINED HEREIN, AND SAME IS SUBMITTED SUBJECT TO ERRORS, OMISSIONS, CHANGE OF PRICE, RENTAL OR OTHER CONDITIONS, WITHDRAWAL WITHOUT NOTICE, AND TO ANY SPECIAL LISTING CONDITIONS IMPOSED BY THE PROPERTY OWNER(S). ANY PROJECTIONS, OPINIONS OR ESTIMATES ARE SUBJECT TO UNCERTAINTY AND DO NOT SIGNIFY CURRENT OR FUTURE PROPERTY PERFORMANCE.

