

Waikiki
LUXURY

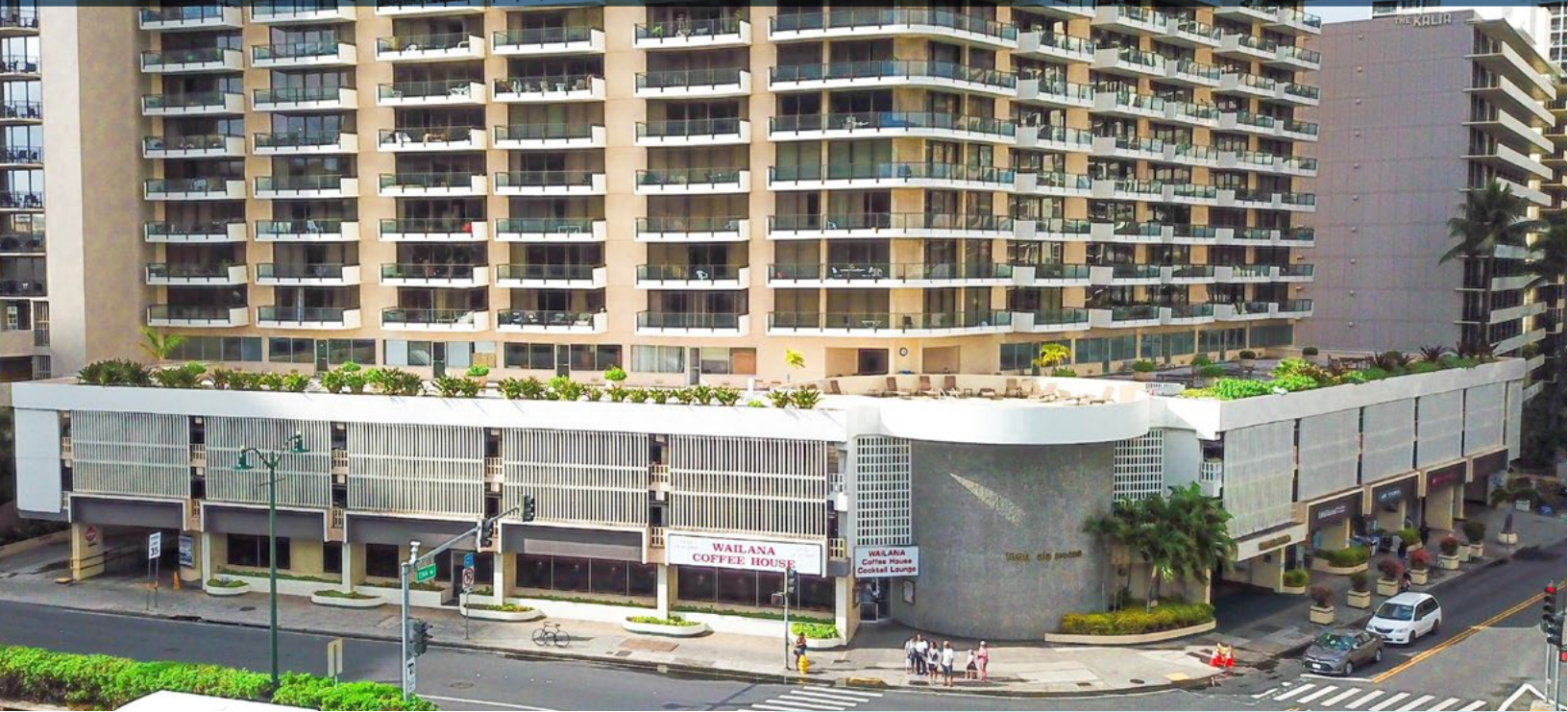
FOR
SUB
LEASE

**WAILANA COFFEE HOUSE
1860 ALA MOANA BLVD/HONOLULU, HI**



**CUSHMAN &
WAKEFIELD**

ChaneyBrooks



Rare opportunity to lease one of Waikiki's iconic landmarks. Situated at the gateway of Waikiki. The property is ideally positioned to take advantage of the densely populated surrounding area of both hotel guests and residents. With over 115 feet of frontage, this space provides significant exposure along the corner of Ala Moana Blvd. and John Ena Rd.

Lease Terms

Size	8,649 SF
Base Rent	\$12/SF/Month
CAM	\$2.35/SF/Month
Term	5-10 Years

Hotel Rooms

Hilton Hawaiian Village	3,998*
The Ilikai	1,009
The Modern Honolulu	353
The Equus	63
Aqua Palms	262
Ramada Plaza	198
Condo Units	3,535**

*hotel + timeshare **0.3 mile radius

Highlights

- + High visibility on main Waikiki thoroughfare
- + Central location with over 7,000 hotel accommodations within the immediate vicinity
- + Available parking also on site through validation
- + Landlord prefers retail use

Andrew D. Starn (B)
Senior Vice President
+1 808 387 8424
astarn@chaneybrooks.com

Matthew G. Schull (S)
Senior Associate
+1 808 225 8331
mschull@chaneybrooks.com

1440 Kapiolani Boulevard,
Suite 1010
Honolulu, HI 96814
Main +1 808 544 1600
Fax +1 808 544 9574
chaneybrooks.com | cushwake.com

Waikiki
LUXURY

FOR
SUB
LEASE

WAILANA COFFEE HOUSE
1860 ALA MOANA BLVD/HONOLULU, HI



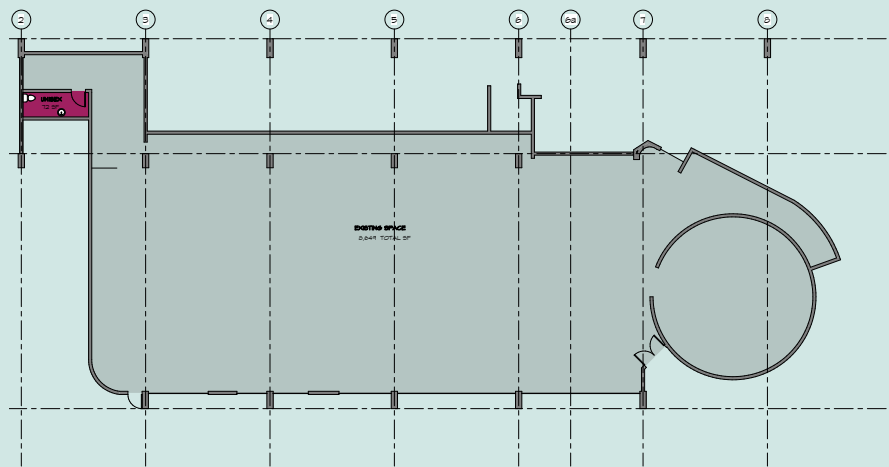
CUSHMAN & WAKEFIELD

ChaneyBrooks



Waikiki Visitor Statistics

Visitor Accommodations	35,804
Total Daytime Employees	44,064
2017 Total Oahu Arrivals	8,832,598
Average Length of Stay	8.69 days
2017 Oahu Visitor Expenditures	\$7.75 billion



Ala Moana Blvd

Independently Owned and Operated / A Member of the Cushman & Wakefield Alliance

Cushman & Wakefield Copyright 2015. No warranty or representation, express or implied, is made to the accuracy or completeness of the information contained herein, and same is submitted subject to errors, omissions, change of price, rental or other conditions, withdrawal without notice, and to any special listing conditions imposed by the property owner(s). As applicable, we make no representation as to the condition of the property (or properties) in question.