



FOR LEASE



**CUSHMAN &
WAKEFIELD**

ChaneyBrooks

3159 KOAPAKA STREET 1A

Honolulu, HI 96819

1,000 SF

PROPERTY HIGHLIGHTS

With convenient access to Honolulu International Airport, Pearl Harbor, and Downtown Honolulu, 3159 Koapaka offers a versatile space in a prime location.

Base Rent: \$1.25/SF/Mo

CAM: \$0.62/SF/Mo

JACK RONEY (S)

Real Estate Advisor
+1 808 721 4219
jroney@chaneybrooks.com

ANTHONY PROVENZANO (B) SIOR, CCIM

Senior Vice President
+1 808 387 3444
aprovenzano@chaneybrooks.com

KELLY A. VEA (S)

Real Estate Advisor
+1 808 489 2703
kvea@chaneybrooks.com

Independently Owned and Operated / A Member of the Cushman & Wakefield Alliance
©2021 CUSHMAN & WAKEFIELD CHANEYBROOKS. NO WARRANTY OR REPRESENTATION, EXPRESS OR IMPLIED, IS MADE TO THE ACCURACY OR COMPLETENESS OF THE INFORMATION CONTAINED HEREIN, AND SAME IS SUBMITTED SUBJECT TO ERRORS, OMISSIONS, CHANGE OF PRICE, RENTAL OR OTHER CONDITIONS, WITHDRAWAL WITHOUT NOTICE, AND TO ANY SPECIAL LISTING CONDITIONS IMPOSED BY THE PROPERTY OWNER(S). AS APPLICABLE, WE MAKE NO REPRESENTATION AS TO THE CONDITION OF THE PROPERTY (OR PROPERTIES) IN QUESTION.

1440 Kapiolani Blvd., Suite 1010 | Main +1 808 544 1600 | Fax +1 808 544 9574

cushmanwakefield.com | chaneybrooks.com

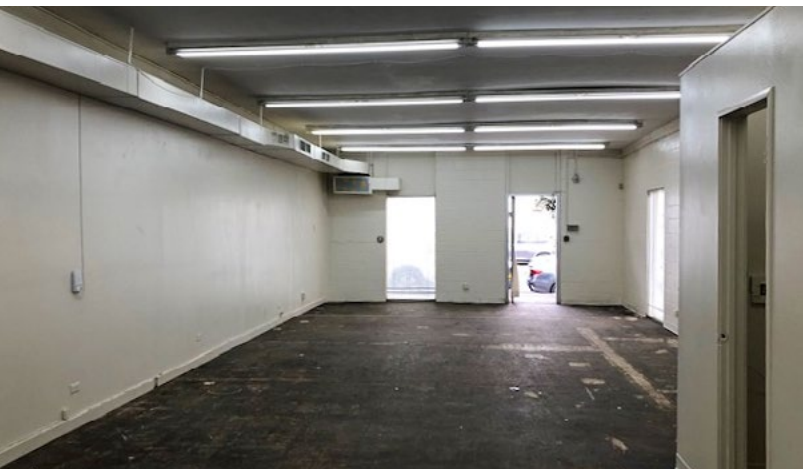
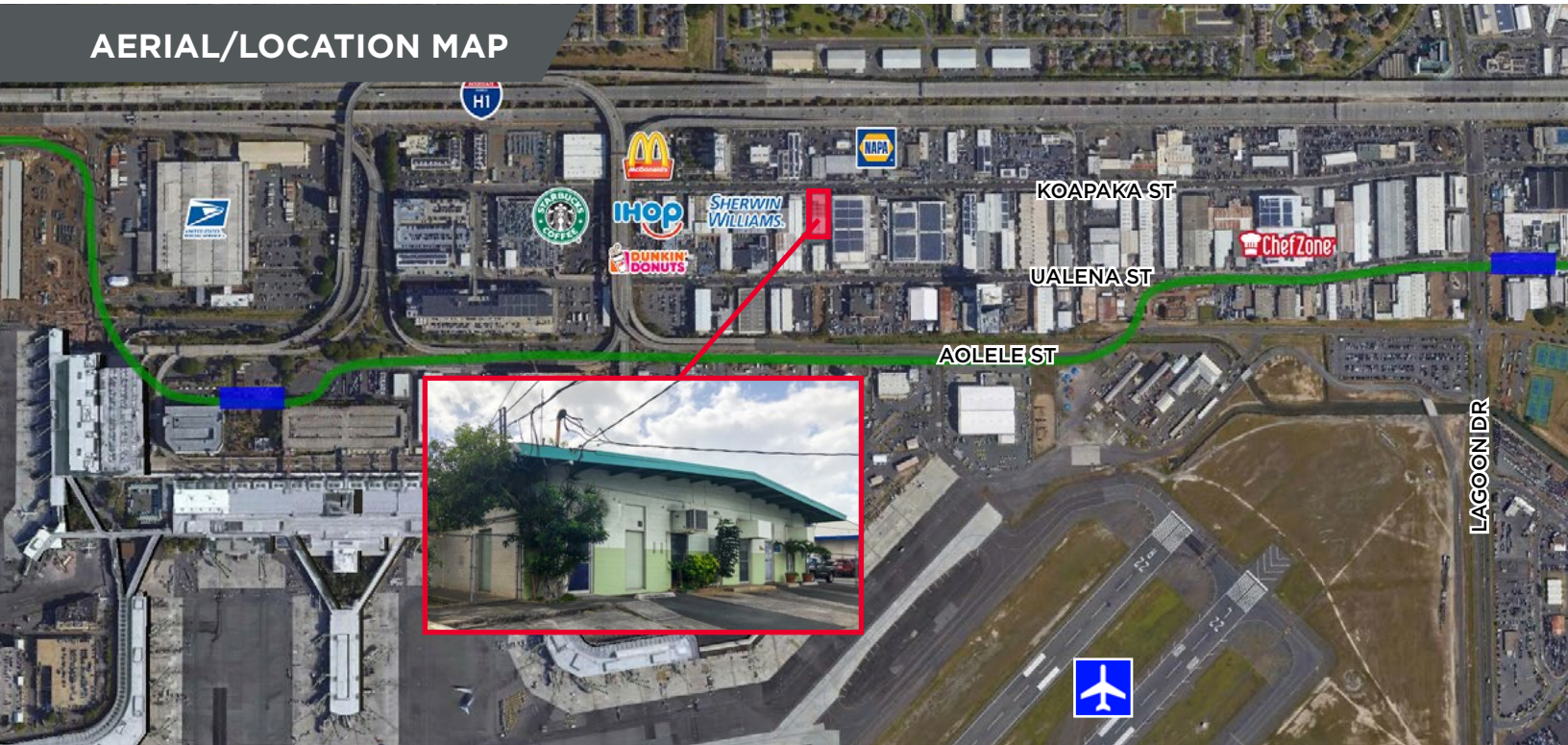
3159 KOAPAKA ST 1A

Honolulu, HI 96819

1,000 SF



AERIAL/LOCATION MAP



JACK RONEY (S)
Real Estate Advisor
+1 808 721 4219
jroney@chaneybrooks.com

ANTHONY PROVENZANO (B) SIOR, CCIM
Senior Vice President
+1 808 387 3444
aprovenzano@chaneybrooks.com

KELLY A. VEA (S)
Real Estate Advisor
+1 808 489 2703
kvea@chaneybrooks.com