



ChaneyBrooks

WAREHOUSE SPACE AVAILABLE FOR LEASE

99-1151 IWAENA STREET

Aiea, Hawaii 96701



AVAILABLE FOR LEASE
11,654 SF - 25,892 SF

Great Visibility & Easy Access

Great location in Central Oahu with easy access to Honolulu and the Leeward and Windward sides. Clear height of 18' on the low end and 22' on the high end. Located right across from Reynold's recycling.

CONTACT US FOR MORE INFORMATION

ANTHONY PROVENZANO (B) SIOR, CCIM
+1 808 387 3444
aprovenzano@chaneybrooks.com

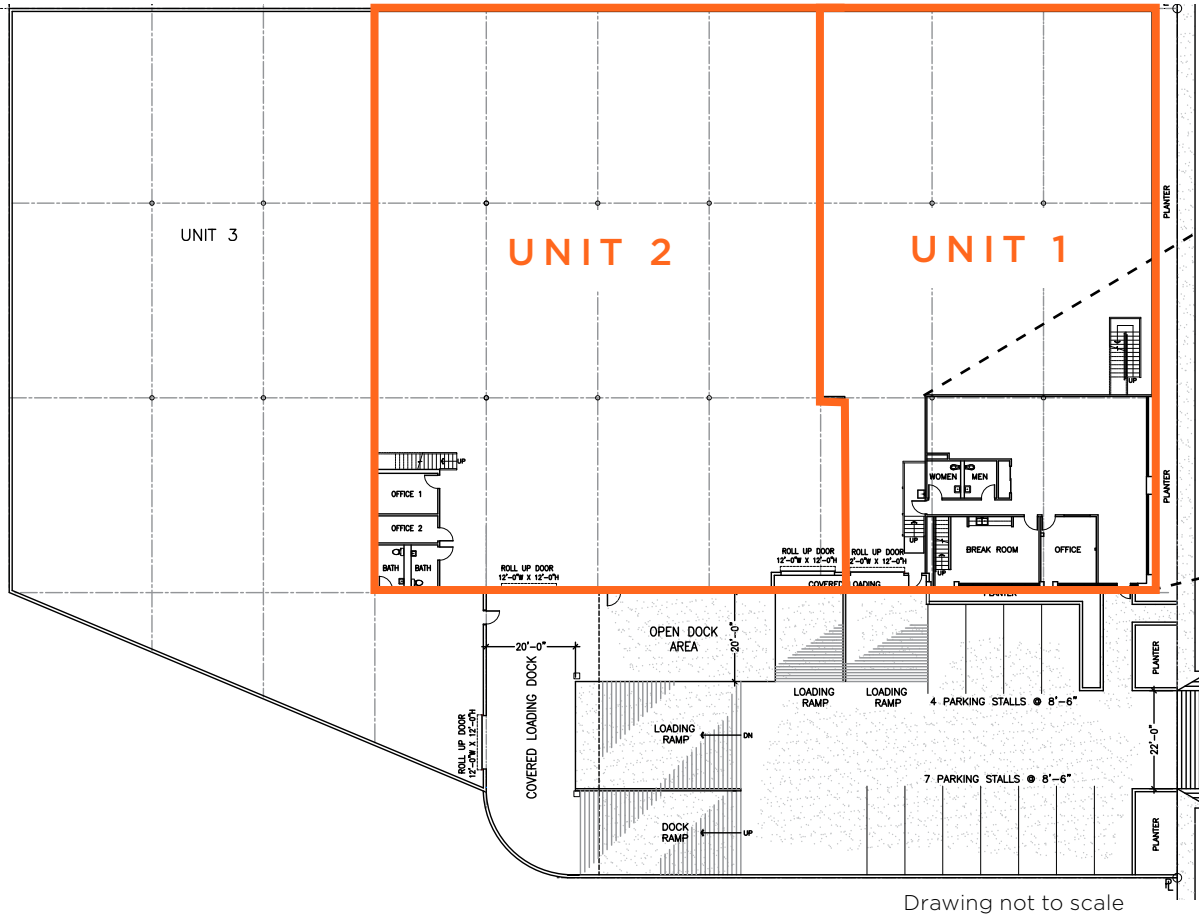
KELLY A. VEA (S)
+1 808 489 2703
kvea@chaneybrooks.com

JACK RONEY (S)
+1 808 721 4219
jroney@chaneybrooks.com

www.chaneybrooks.com
1440 Kapiolani Boulevard,
Suite 1010,
Honolulu, Hawaii 96814

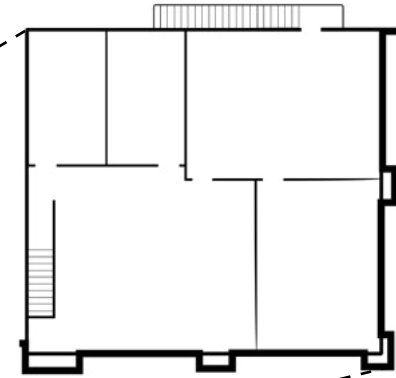
Unit 1: Available 3/1/2022. Signage opportunity at the front of the building. Two-story office with glass frontage containing a reception area, break room, private offices, 2 restrooms, and an open floor plan. One roll up door.

Unit 2: Warehouse space with a small two-story office space complete with 2 private offices, 1 conference room, and a restroom. Private loading dock for 40' containers. Two roll up doors and a loading platform area.

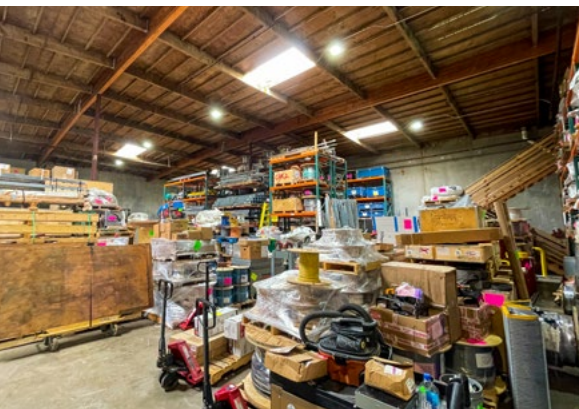


IWAENA STREET

Second Floor Office



Drawing not to scale



UNIT 1*	11,654 SF
UNIT 2	14,238 SF
Zoning	I-2
Base Rent	
Unit 1	\$1.20/SF/MO
Unit 2	\$1.10/SF/MO
CAM	\$0.44/SF/MO

*Available: 3/1/2022

