

FOR LEASE
1540 S. KING STREET
Honolulu, HI 96826



CUSHMAN &
WAKEFIELD

ChaneyBrooks



1,694 SF

PRIME LOCATION
OFFICE SPACE IN THE HEART OF HONOLULU

Monthly Rent: \$2.75/SF
Tenant to pay Utilities

FOR LEASE
1540 S. KING STREET
Honolulu, HI 96826



CUSHMAN &
WAKEFIELD

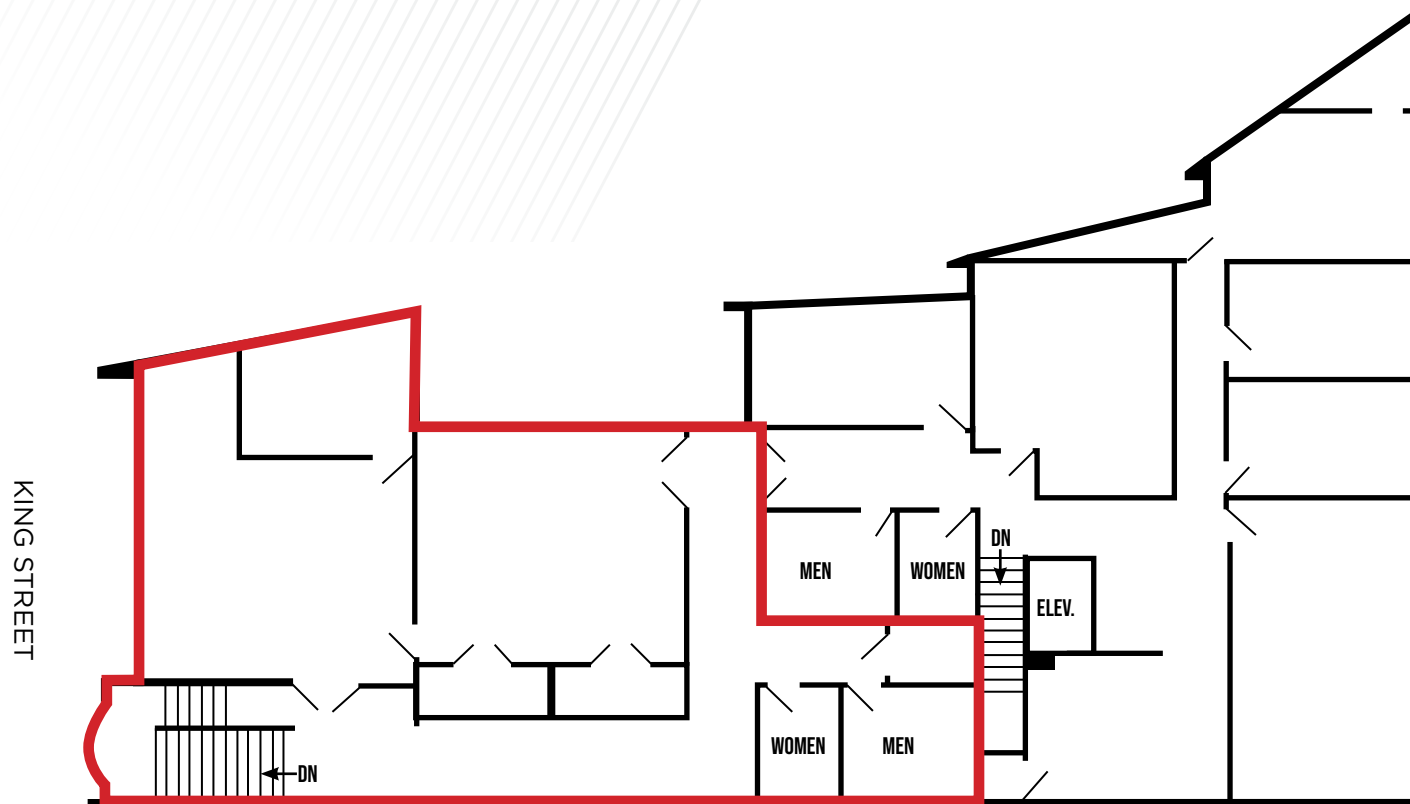
ChaneyBrooks



FOR LEASE
1540 S. KING STREET
Honolulu, HI 96826



ChaneyBrooks



Drawing not to scale.

FOR LEASE
1540 S. KING STREET
Honolulu, HI 96826



Property Description

Beautiful space overlooking King Street in the heart of Honolulu. Adjacent to Downtown, Kakaako, Ala Moana and Waikiki and just seconds from H1, the location could not be more convenient. The secured parking and private stairwell lead you to the clean and efficient office space with private bathrooms and two large offices. Viable for a multitude of office users seeking a recognizable location and professional atmosphere. This rare opportunity provides a business with the feel and appearance of controlling an entire building, but with the cost of a single unit.

Contact

ANTHONY PROVENAZANO (B) SIOR, CCIM
Senior Vice President
+1 808 387 3444
aprovenzano@chaneybrooks.com

JACK RONEY (S)
Real Estate Advisor
+1 808 721 4219
jroney@chaneybrooks.com

KELLY A. VEA (S)
Real Estate Advisor
+1 808 489 2703
kvea@chaneybrooks.com

www.chaneybrooks.com

1440 Kapiolani Blvd. Suite 1010
Honolulu, HI 96814
Main: +1 808 544 1600
Fax: +1 808 544 9574