

AVAILABLE SPACE FOR LEASE

439 KALIHI ST

Honolulu, HI 96819



HIGHLIGHTS

- Large loading area with dock
- Concrete mezzanine
- Warehouse LED lights
- Split a/c units in all offices, breakroom & dry storage
- Insulated Roof
- Gas water heater
- Fire alarm system

PROPERTY DETAILS

Available Space

Warehouse	1,390 SF
Dry Storage	983 SF
Mezzanine	1,171 SF
	3,544 SF

Office	1,611 SF
Total	5,155 SF

Base Rent	\$8,000/month
Operating Expense	\$2,590/month
Zoning	IMX-1, Industrial-Commercial Mixed Use

Loading Dock	One
Height	20' (peak); 18' (eave)
Description	Two private office and a large conference/breakroom, high cube warehouse, dry storage and concrete mezzanine area



Contact

RYAN K. SAKAGUCHI (B)

Senior Vice President
+1 808 779 6509
rsakaguchi@chaneybrooks.com

1440 Kapiolani Blvd, Suite 1010, Honolulu, Hawaii 96814
Main: +1 808 544 1600 Fax: +1 808 544 9574

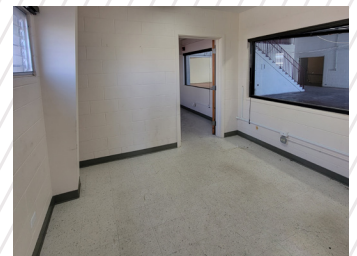
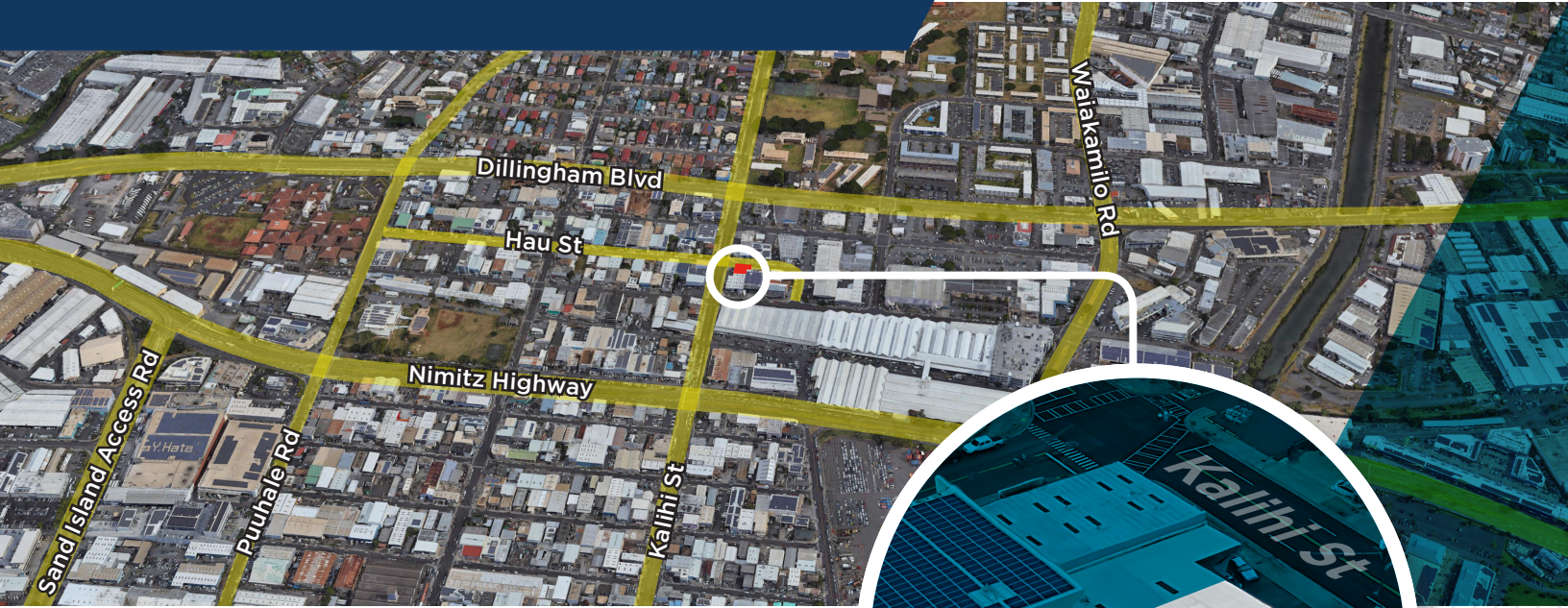
www.chaneybrooks.com

©2022 Cushman & Wakefield. All rights reserved. The information contained in this communication is strictly confidential. This information has been obtained from sources believed to be reliable but has not been verified. No warranty or representation, express or implied, is made as to the condition of the property (or properties) referenced herein or as to the accuracy or completeness of the information contained herein, and same is submitted subject to errors, omissions, change of price, rental or other conditions, withdrawal without notice, and to any special listing conditions imposed by the property owner(s). Any projections, opinions or estimates are subject to uncertainty and do not signify current or future property performance.

AVAILABLE SPACE FOR LEASE

439 KALIH I ST

Honolulu, HI 96819



Contact

RYAN K. SAKAGUCHI (B)

Senior Vice President

+1 808 779 6509

rsakaguchi@chaneybrooks.com

1440 Kapiolani Blvd, Suite 1010, Honolulu, Hawaii 96814

Main: +1 808 544 1600 Fax: +1 808 544 9574

www.chaneybrooks.com

AVAILABLE SPACE FOR LEASE

439 KALIHI ST

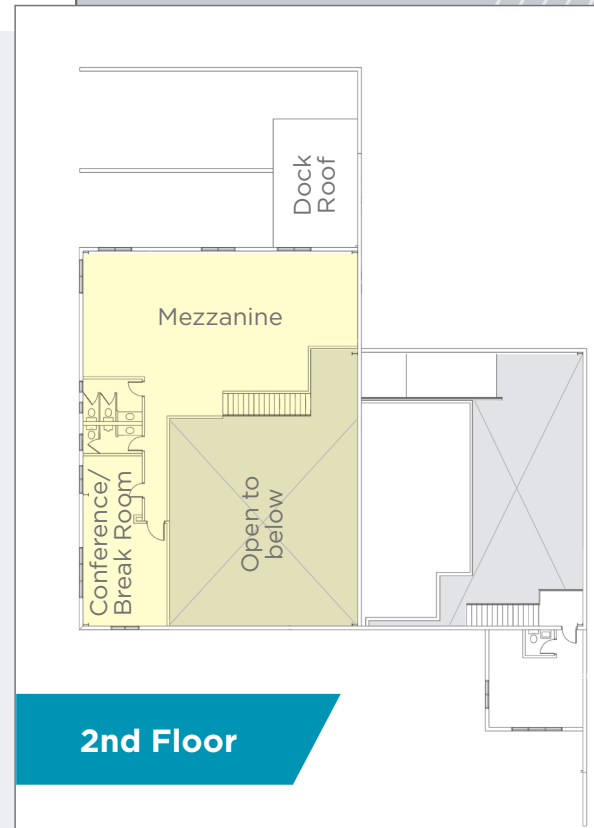
Honolulu, HI 96819



ChaneyBrooks



1st Floor



2nd Floor

Contact

RYAN K. SAKAGUCHI (B)

Senior Vice President

+1 808 779 6509

rsakaguchi@chaneybrooks.com

1440 Kapiolani Blvd, Suite 1010, Honolulu, Hawaii 96814

Main: +1 808 544 1600 Fax: +1 808 544 9574

www.chaneybrooks.com

©2022 Cushman & Wakefield. All rights reserved. The information contained in this communication is strictly confidential. This information has been obtained from sources believed to be reliable but has not been verified. No warranty or representation, express or implied, is made as to the condition of the property (or properties) referenced herein or as to the accuracy or completeness of the information contained herein, and same is submitted subject to errors, omissions, change of price, rental or other conditions, withdrawal without notice, and to any special listing conditions imposed by the property owner(s). Any projections, opinions or estimates are subject to uncertainty and do not signify current or future property performance.