

FEE SIMPLE LOTS AVAILABLE



honokōhau nui

QUEEN KA'AHUMANU HIGHWAY, KAILUA-KONA
ISLAND OF HAWAII

[CLICK FOR PROPERTY WEBSITE](#)



INFRASTRUCTURE

- Phase 1 - Completed
- Phase 2 - Planned

THE QUEEN'S HEALTH SYSTEM

U-HAUL

KAMANU ST

KIMO DR

KAWALANI ST

ALLIED QUARRY RD

QUEEN KA'AHUMANU HWY

LOT R - 24.217 ACRES
AVAILABLE

LOT N - 2.02 ACRES
AVAILABLE

LOT P - 1.62 ACRES
IN NEGOTIATIONS

LOT L - 2.08 ACRES
AVAILABLE

LOT M - 1.43 ACRES
AVAILABLE

LOT K - 8.708 ACRES
AVAILABLE

LOT J - 1.50 ACRES
IN NEGOTIATIONS

LOT H - 2.459 ACRES
AVAILABLE

RETAIL LOTS
AVAILABLE FOR SALE

PROPERTY SUMMARY

TENURE:	Fee Simple
LAND AREA:	1.43 to 24.22 Acres
ZONING:	MCX-20 & MG-1A

PROPERTY HIGHLIGHTS

ENTITLEMENTS

Secured, including water

AFFORDABLE HOUSING

Requirements satisfied

WATER & ELECTRICAL

To be stubbed to the property

ROADS

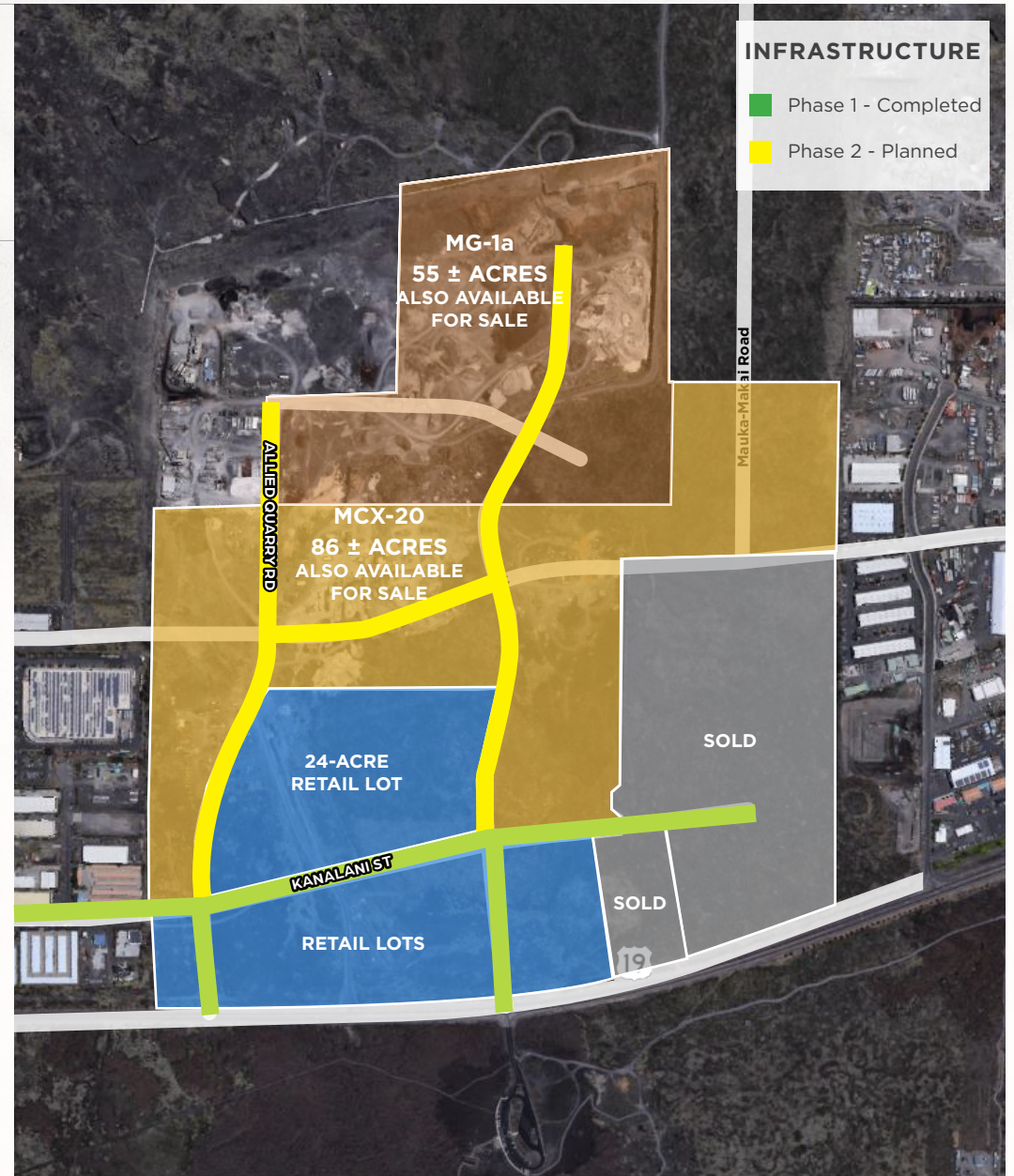
Completed and dedicated to the County

FULLY SIGNALIZED

Intersection off Queen Ka'ahumanu Highway

VISIBILITY & FRONTAGE

Along major thoroughfare Queen Ka'ahumanu Highway





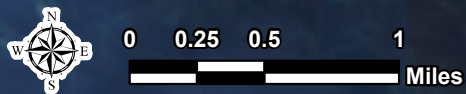
PARCEL	DESCRIPTION	GROSS ACRES	SIZE (SF)	PRICE SF	ASKING PRICE	STATUS
H	Corner lot at North entrance Kaula'ili Street intersection	2.459	107,114	\$50	\$5,355,702	AVAILABLE
J	Corner lot at North entrance Kaula'ili Street intersection	1.497	65,209	\$45	\$2,934,419	IN NEGOTIATIONS
K	Highway frontage	8.708	379,320	\$40	\$15,172,819	AVAILABLE
L	Corner lot at Kimo Drive	2.083	90,735	\$45	\$4,083,097	AVAILABLE
M	Corner lot at signalized intersection of Queen Kaahumanu & Kimo Drive, highway frontage	1.433	64,421	\$50	\$3,121,074	AVAILABLE
N	Corner lot at Kimo Drive	2.024	88,165	\$45	\$3,967,445	AVAILABLE
P	Corner lot at signalized intersection of Queen Kaahumanu & Kimo Drive, highway frontage	1.622	70,654	\$50	\$3,532,746	IN NEGOTIATIONS
Q	Lot with Highway frontage not on a corner	4.296	187,134			SOLD
R	Large lot that seller would consider subdividing	24.217	1,054,893	\$25	\$26,372,313	AVAILABLE

NEIGHBORHOOD MAP



Historically a retreat for Hawaiian royalty, Kailua-Kona is now a sunny destination spot for both Hawaiian residents and tourists, offering excellent local eateries, a variety of shopping, and a vibrant nightlife.

Located just south of the Kona International Airport, Kaloko-Honokohau National Park expands over 1160 acres. Hawaiian fishponds, beach and wildlife can all be explored within the breathtaking park.





LISTED BY

ANTHONY PROVENZANO (B) SIOR, CCIM
Senior Vice President
+1 (808) 387 3444
aprovenzano@chaneybrooks.com

KELLY A VEA (S)
Senior Associate
+1 (808) 489 2703
kvea@chaneybrooks.com

ADVISORY SERVICES BY

Land Advisory Group
MATT DAVIS
Senior Director
+1 (858) 334 4026 x374026
matt.davis@cushwake.com

©2023 Cushman & Wakefield. All rights reserved. The information contained in this communication is strictly confidential. This information has been obtained from sources believed to be reliable but has not been verified. NO WARRANTY OR REPRESENTATION, EXPRESS OR IMPLIED, IS MADE AS TO THE CONDITION OF THE PROPERTY (OR PROPERTIES) REFERENCED HEREIN OR AS TO THE ACCURACY OR COMPLETENESS OF THE INFORMATION CONTAINED HEREIN, AND SAME IS SUBMITTED SUBJECT TO ERRORS, OMISSIONS, CHANGE OF PRICE, RENTAL OR OTHER CONDITIONS, WITHDRAWAL WITHOUT NOTICE, AND TO ANY SPECIAL LISTING CONDITIONS IMPOSED BY THE PROPERTY OWNER(S). ANY PROJECTIONS, OPINIONS OR ESTIMATES ARE SUBJECT TO UNCERTAINTY AND DO NOT SIGNIFY CURRENT OR FUTURE PROPERTY PERFORMANCE.



**CUSHMAN &
WAKEFIELD**

ChaneyBrooks