

PROPERTY HIGHLIGHTS

- Newly built-out turnkey restaurant
- Highly visible Keeaumoku Street location
- Lots of free customer parking
- High traffic neighborhood

PROPERTY DETAILS

Space Size : 2,356 SF
Lease Term : Till June 30, 2028
Base Rent : \$4.69/SF/MO
CAM : \$1.69/SF/MO
Premium : \$200,000

CONTACT US FOR MORE INFORMATION

SALVADOR A. FASI (B)
+1 808 544 9561
sfasi@chaneybrooks.com

JOHN T. RANKIN (S)
+1 808 265 8715
jrankin@chaneybrooks.com



1440 Kapiolani Blvd., Suite 1010, Honolulu, Hawaii 96814
www.chaneybrooks.com

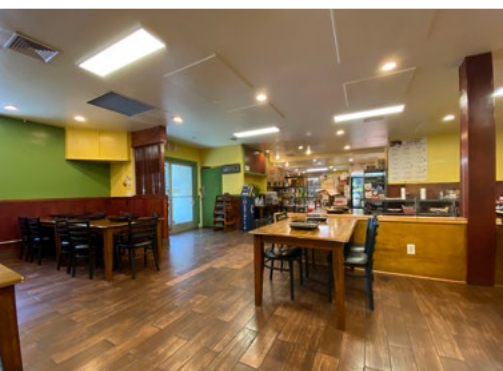
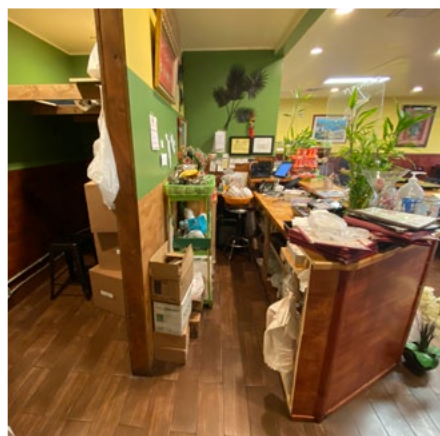
TURN-KEY RESTAURANT FOR
ASSIGNMENT OF LEASE

1108 KEEAUMOKU ST

Honolulu, HI 96814



ChaneyBrooks



CONTACT US FOR MORE INFORMATION

SALVADOR A. FASI (B)
+1 808 544 9561
sfasi@chaneybrooks.com

JOHN T. RANKIN (S)
+1 808 265 8715
jrankin@chaneybrooks.com

1440 Kapiolani Blvd., Suite 1010, Honolulu, Hawaii 96814
www.chaneybrooks.com

Independently Owned and Operated / A Member of the Cushman & Wakefield Alliance
©2022 Cushman & Wakefield ChaneyBrooks. All rights reserved. The information contained in this communication is strictly confidential. This information has been obtained from sources believed to be reliable but has not been verified. NO WARRANTY OR REPRESENTATION, EXPRESS OR IMPLIED, IS MADE AS TO THE CONDITION OF THE PROPERTY (OR PROPERTIES) REFERENCED HEREIN OR AS TO THE ACCURACY OR COMPLETENESS OF THE INFORMATION CONTAINED HEREIN, AND SAME IS SUBMITTED SUBJECT TO ERRORS, OMISSIONS, CHANGE OF PRICE, RENTAL OR OTHER CONDITIONS, WITHDRAWAL WITHOUT NOTICE, AND TO ANY SPECIAL LISTING CONDITIONS IMPOSED BY THE PROPERTY OWNER(S). ANY PROJECTIONS, OPINIONS OR ESTIMATES ARE SUBJECT TO UNCERTAINTY AND DO NOT SIGNIFY CURRENT OR FUTURE PROPERTY PERFORMANCE.