



ChaneyBrooks

CLASS "A" WAREHOUSE.

CONVENIENTLY LOCATED.

AMPLE PARKING.

1026 LAUIA STREET

KAPOLEI, HI



[CLICK HERE FOR PROPERTY VIDEO](#)

ANTHONY PROVENZANO (B) SIOR, CCIM

Senior Vice President
+1 808 387 3444
aprovenzano@chaneybrooks.com

KELLY A. VEA (S)

Senior Associate
+1 808 489 2703
kvea@chaneybrooks.com

PRESENTED BY:



Excellent location in Kapolei Business Park, right around the corner from AirGas and Longs Drugs Distribution Center. Zoned I-2, each space has 1-2 roll-up doors for easy loading and unloading. A concrete warehouse with 24' ceilings and a secured gate. One restroom with ability to add additional restrooms. Located less than 5-minutes from the H1. Do not miss out on this opportunity to grow your business here.

1026 LAUIA ST.

Location	Kapolei
Land	1.001 AC
Space B	3,168 SF
Base Rent	\$1.50/SF/MO
CAM	\$0.33/SF/MO
Zoning	I-2
Term	3-5+ Years
Available	Immediately



LOCATED IN
KAPOLEI BUSINESS
PARK



MULTIPLE ACCESS
POINTS. 1-2 ROLL-UP
DOORS PER BAY

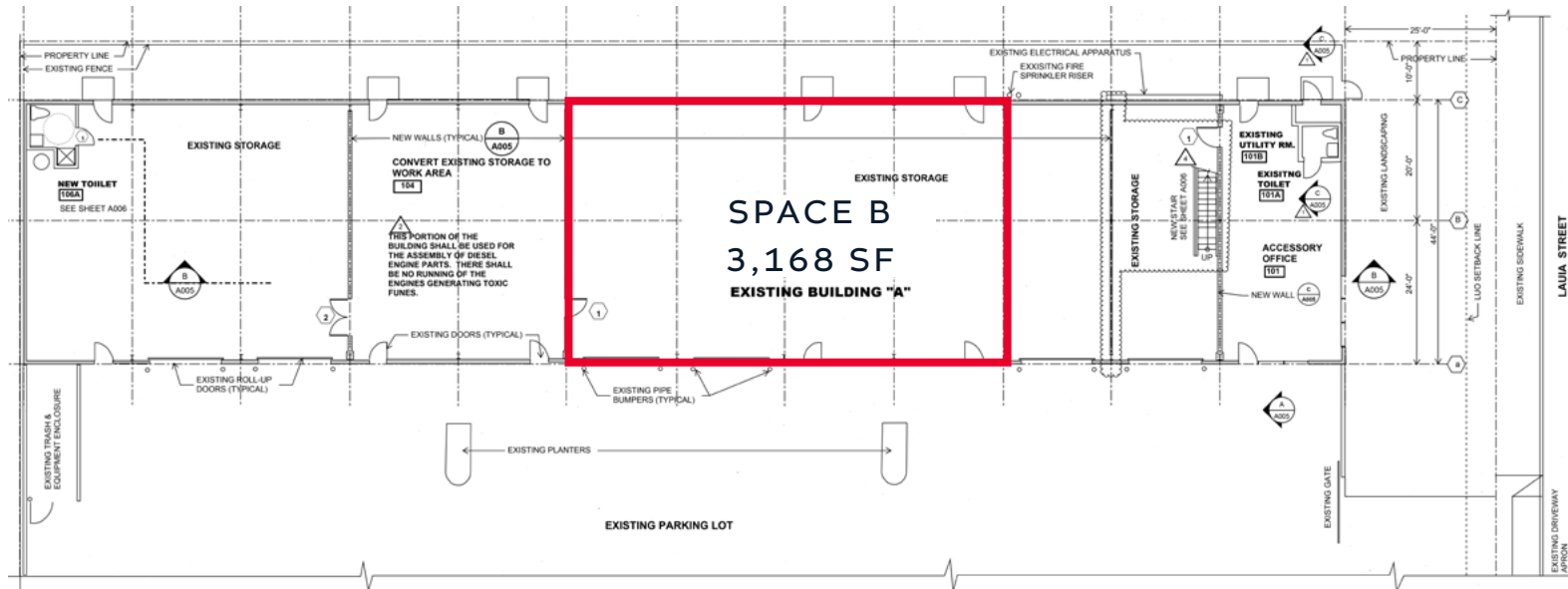


PARKING FRONTING THE
SPACE WITHIN THE GATED
PROPERTY FOR SPACE A



HIGH CEILINGS IN WAREHOUSE
AND ONE RESTROOM

SPACE B: 3,168 SF





ChaneyBrooks

PRESENTED BY:



ANTHONY PROVENZANO (B) SIOR, CCIM

Senior Vice President

+1 808 387 3444

aprovenzano@chaneybrooks.com

KELLY A. VEA (S)

Senior Associate

+1 808 489 2703

kvea@chaneybrooks.com

Independently Owned and Operated / A Member of the Cushman & Wakefield Alliance
©2022 Cushman & Wakefield ChaneyBrooks. All rights reserved. The information contained in this communication is strictly confidential. This information has been obtained from sources believed to be reliable but has not been verified. NO WARRANTY OR REPRESENTATION, EXPRESS OR IMPLIED, IS MADE AS TO THE CONDITION OF THE PROPERTY (OR PROPERTIES) REFERENCED HEREIN OR AS TO THE ACCURACY OR COMPLETENESS OF THE INFORMATION CONTAINED HEREIN, AND SAME IS SUBMITTED SUBJECT TO ERRORS, OMISSIONS, CHANGE OF PRICE, RENTAL OR OTHER CONDITIONS, WITHDRAWAL WITHOUT NOTICE, AND TO ANY SPECIAL LISTING CONDITIONS IMPOSED BY THE PROPERTY OWNER(S). ANY PROJECTIONS, OPINIONS OR ESTIMATES ARE SUBJECT TO UNCERTAINTY AND DO NOT SIGNIFY CURRENT OR FUTURE PROPERTY PERFORMANCE.

1440 Kapiolani Blvd. Suite 1010 | Honolulu, HI 96814
Main: +1 808 544 1600 | Fax: +1 808 544 9574