

FOR LEASE

765 QUEEN STREET

Honolulu, HI 96813



CUSHMAN & WAKEFIELD

ChaneyBrooks



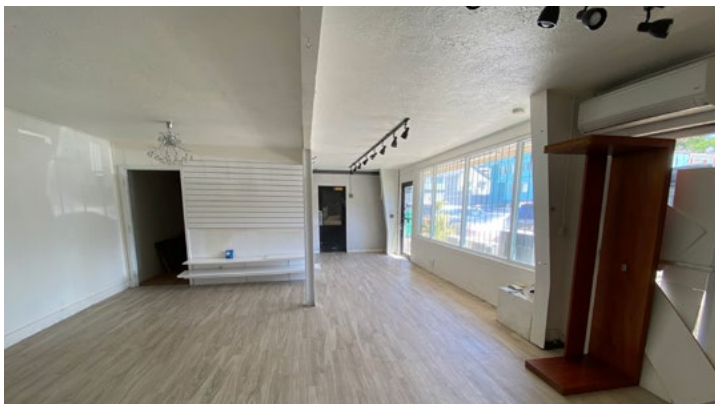
Retail/Office Space

Property Details

Size	1,624 SF
Modified Gross Rent	\$2.50/SF/Mo
Zoning	KAK

Space Highlights

- Centrally located with easy access to Downtown and Ala Moana districts
- Two separate levels allow the space to be used as ground floor retail showroom and second floor office space
- Restrooms and AC units on each floor



Contact

JOHN T. RANKIN (S)
Real Estate Advisor
+1 808 265 8715
jrankin@chaneybrooks.com

SALVADOR A. FASI (B)
Senior Real Estate Advisor
+1 808 544 9561
sfasi@chaneybrooks.com

FOR LEASE
765 QUEEN STREET
Honolulu, HI 96813



**CUSHMAN &
WAKEFIELD**

ChaneyBrooks



Contact

JOHN T. RANKIN (S)
Real Estate Advisor
+1 808 265 8715
jrankin@chaneybrooks.com

SALVADOR A. FASI (B)
Senior Real Estate Advisor
+1 808 544 9561
sfasi@chaneybrooks.com

1440 Kapiolani Blvd., Suite 1010
Honolulu, HI 96814
Main +1 808 544 1600
Fax +1 808 544 9574

©2022 Cushman & Wakefield ChaneyBrooks. All rights reserved. The information contained in this communication is strictly confidential. This information has been obtained from sources believed to be reliable but has not been verified. NO WARRANTY OR REPRESENTATION, EXPRESS OR IMPLIED, IS MADE AS TO THE CONDITION OF THE PROPERTY (OR PROPERTIES) REFERENCED HEREIN OR AS TO THE ACCURACY OR COMPLETENESS OF THE INFORMATION CONTAINED HEREIN, AND SAME IS SUBMITTED SUBJECT TO ERRORS, OMISSIONS, CHANGE OF PRICE, RENTAL OR OTHER CONDITIONS, WITHDRAWAL WITHOUT NOTICE, AND TO ANY SPECIAL LISTING CONDITIONS IMPOSED BY THE PROPERTY OWNER(S). ANY PROJECTIONS, OPINIONS OR ESTIMATES ARE SUBJECT TO UNCERTAINTY AND DO NOT SIGNIFY CURRENT OR FUTURE PROPERTY PERFORMANCE.