

FOR LEASE
AVAILABLE NOW



2146 PUUHALE PLACE
HONOLULU, HI 96819



CUSHMAN &
WAKEFIELD

ChaneyBrooks



PROPERTY **HIGHLIGHTS**

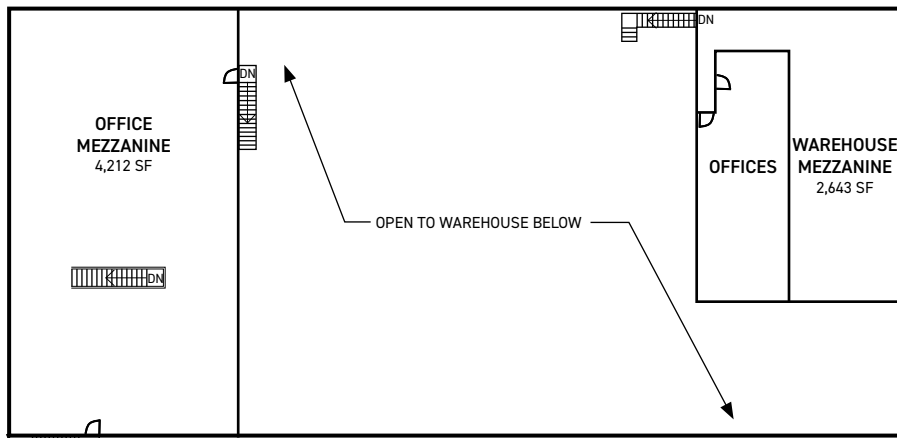
A spacious industrial property is now ready for lease in the heart of Honolulu. It is situated in a prime location just minutes away from the Daniel K. Inouye International Airport and Honolulu Harbor, providing easy access for both local and international businesses.

This standalone building is situated on Nimitz Highway, providing an exceptional marketing opportunity for your business. With prominent signage along this busy road, your business can reach thousands of daily commuters.

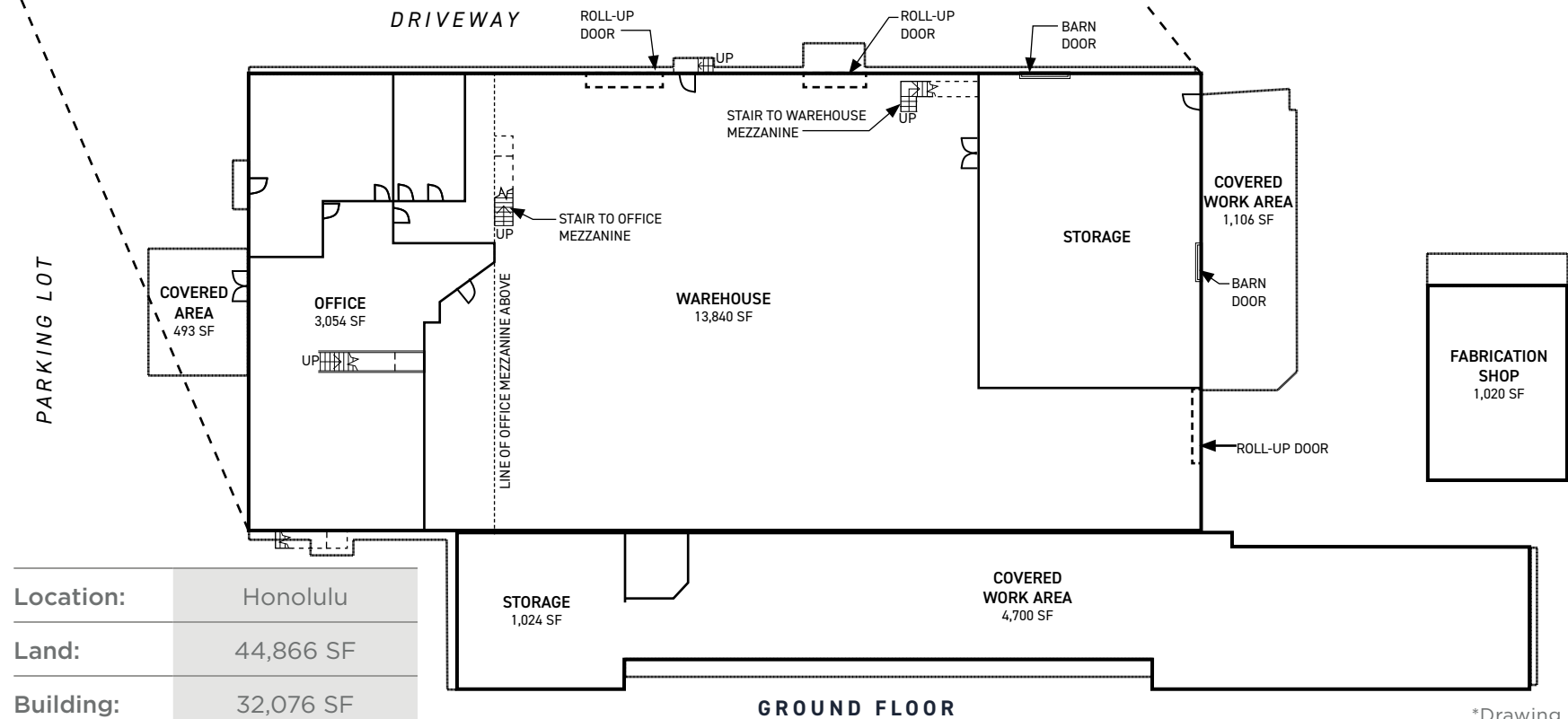
The property at 2146 Puuhale offers the perfect blend of warehouse and office space, making it suitable for a wide range of businesses and industries. Don't miss this chance to secure a top-notch location for your operations.

SECOND FLOOR

2146 PUUHALE PLACE | HONOLULU, HI



- » 2 Truck High Roll Up Doors
- » 1 Grade Level Roll Up Door
- » Partially enclosed outdoor shed area
- » Fabrication shop



Location:	Honolulu
Land:	44,866 SF
Building:	32,076 SF
Base Rent:	\$0.90/SF/Mo*
RPT:	\$0.17/SF/Mo*
Term:	7+ Years
Zoning:	I-2

*On the land SF

This is an absolute net lease.

*Drawing not to scale.

SITE PLAN

44,866 SF

2146 PUUHALE PLACE | HONOLULU, HI

A DRIVING WORKFORCE

Visible from Nimitz Highway and located within minutes of Daniel K. Inouye International Airport and Honolulu Harbor.



POPULATION

22,351
Within 1 Miles

151,932
Within 3 Miles

292,784
Within 5 Miles



AVG. INCOME

\$84,053
Within 1 Miles

\$98,836
Within 3 Miles

\$96,738
Within 5 Miles

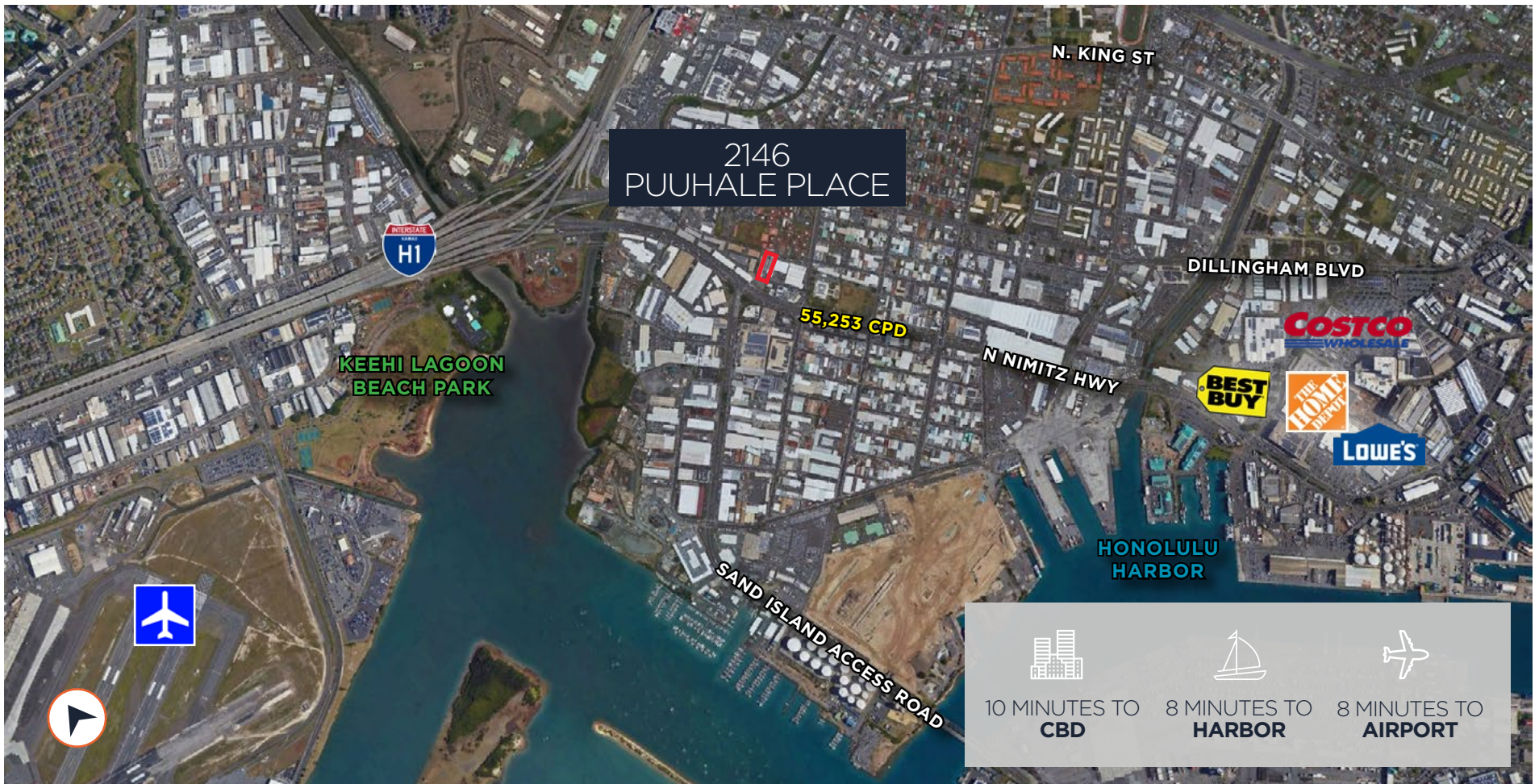


HOUSEHOLDS

5,162
Within 1 Miles

50,463
Within 3 Miles

108,648
Within 5 Miles





PHOTOS





CONTACT INFORMATION

ANTHONY PROVENZANO (B) SIOR, CCIM

+1 808 387 3444

aprovenzano@chaneybrooks.com

KELLY A. VEA (S)

+1 808 489 2703

kvea@chaneybrooks.com



**CUSHMAN &
WAKEFIELD**

ChaneyBrooks

1440 Kapiolani Boulevard Suite 1010,
Honolulu, Hawaii 96814

www.chaneybrooks.com

Independently Owned and Operated / A Member of the Cushman & Wakefield Alliance

©2023 CUSHMAN & WAKEFIELD CHANEYBROOKS. NO WARRANTY OR REPRESENTATION, EXPRESS OR IMPLIED, IS MADE TO THE ACCURACY OR COMPLETENESS OF THE INFORMATION CONTAINED HEREIN, AND SAME IS SUBMITTED SUBJECT TO ERRORS, OMISSIONS, CHANGE OF PRICE, RENTAL OR OTHER CONDITIONS, WITHDRAWAL WITHOUT NOTICE, AND TO ANY SPECIAL LISTING CONDITIONS IMPOSED BY THE PROPERTY OWNER(S). AS APPLICABLE, WE MAKE NO REPRESENTATION AS TO THE CONDITION OF THE PROPERTY (OR PROPERTIES) IN QUESTION.