

# 702 S BERETANIA STREET

Suite 200 (Third Floor)

**FOR LEASE | ~9,000 SF**



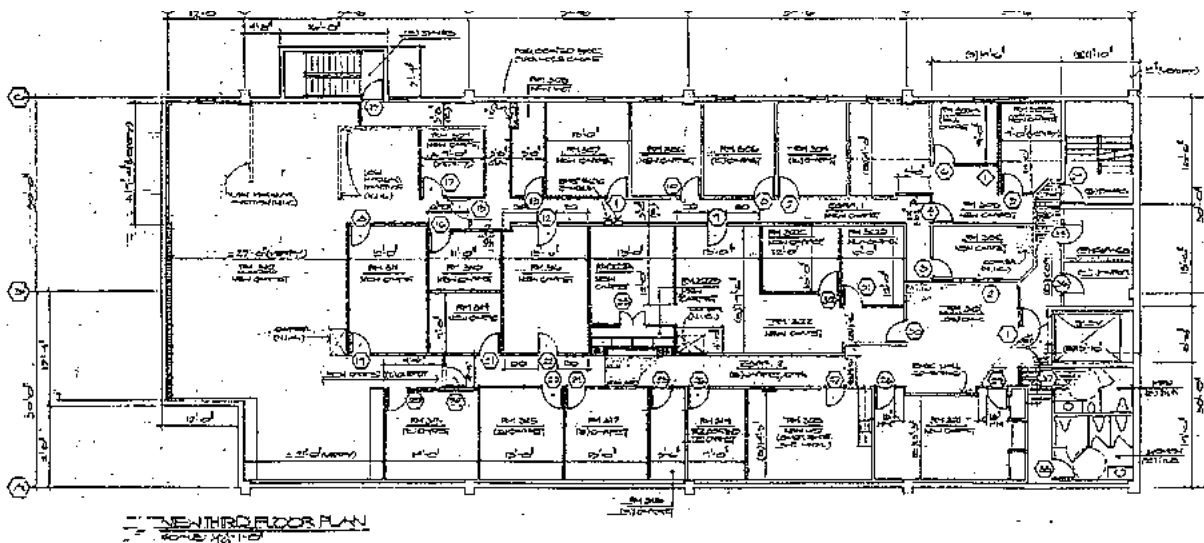
## PROPERTY HIGHLIGHTS

- Close proximity to the heart of Downtown Honolulu
- Easily accessible via multiple entry points, convenient to public transportation
- On-site parking
- Site provides over 20 private enclosed office spaces, plus large break room
- Common area restrooms located on the sites floor
- Space is ideal for any medium size back-office operation

## PROPERTY DETAILS

|                              |  |
|------------------------------|--|
| <b>SIZE:</b>                 | -9000 SF                               |
| <b>TERM:</b>                 | 3 to 5 Years                           |
| <b>ASKING BASE RENT:</b>     | \$1.25/SF/Mo<br>w/ 3% Annual Increases |
| <b>CAM (2023 Estimated):</b> | \$0.84/SF/Mo                           |
| <b>ELECTRIC CHARGES:</b>     | Billed by LL                           |
| <b>PARKING:</b>              | Nine (9) Stalls (\$125/Mo/Stall)       |
| <b>PLUS:</b>                 | HI General Excise Tax                  |
| <b>ZONING:</b>               | BMX-3                                  |
| <b>ELEVATOR ACCESS:</b>      | 5am to 7pm                             |
| <b>AC HOURS:</b>             | 6am to 7pm M-F                         |

## FLOOR PLAN



**KEITH R. GURNEY (B)**  
Real Estate Advisor  
+1 808 396 8788  
kgurney@chaneybrooks.com

**IAN MONTGOMERY (S)**  
Real Estate Advisor  
+1 808 421 8778  
imontgomery@chaneybrooks.com

1440 Kapiolani Boulevard, Suite 1010  
Honolulu, HI 96814 | USA  
Main +1 808 544 1600  
Fax +1 808 544 9574  
[cushmanwakefield.com](http://cushmanwakefield.com) | [chaneybrooks.com](http://chaneybrooks.com)



**CUSHMAN &  
WAKEFIELD**

**ChaneyBrooks**

# 702 S BERETANIA STREET

Suite 200 (Third Floor)

**FOR LEASE | ~9,000 SF**



## PROPERTY PHOTOS



### **KEITH R. GURNEY (B)**

Real Estate Advisor  
+1 808 396 8788  
kgurney@chaneybrooks.com

### **IAN MONTGOMERY (S)**

Real Estate Advisor  
+1 808 421 8778  
imontgomery@chaneybrooks.com

1440 Kapiolani Boulevard, Suite 1010  
Honolulu, HI 96814 | USA  
Main +1 808 544 1600  
Fax +1 808 544 9574

[cushmanwakefield.com](http://cushmanwakefield.com) | [chaneybrooks.com](http://chaneybrooks.com)

Independently Owned and Operated / A Member of the Cushman & Wakefield Alliance

©2023 Cushman & Wakefield ChaneyBrooks. All rights reserved. The information contained in this communication is strictly confidential. This information has been obtained from sources believed to be reliable but has not been verified. NO WARRANTY OR REPRESENTATION, EXPRESS OR IMPLIED, IS MADE AS TO THE CONDITION OF THE PROPERTY (OR PROPERTIES) REFERENCED HEREIN OR AS TO THE ACCURACY OR COMPLETENESS OF THE INFORMATION CONTAINED HEREIN, AND SAME IS SUBMITTED SUBJECT TO ERRORS, OMISSIONS, CHANGE OF PRICE, RENTAL OR OTHER CONDITIONS, WITHDRAWAL WITHOUT NOTICE, AND TO ANY SPECIAL LISTING CONDITIONS IMPOSED BY THE PROPERTY OWNER(S). ANY PROJECTIONS, OPINIONS OR ESTIMATES ARE SUBJECT TO UNCERTAINTY AND DO NOT SIGNIFY CURRENT OR FUTURE PROPERTY PERFORMANCE.