



**98-135
KAMEHAMEHA
HIGHWAY &
98-108
LIPOA
PLACE**

PAD SITE FOR LONG TERM GROUND LEASE

EXCLUSIVE LISTING AGENTS

ANTHONY PROVENZANO (B) SIOR, CCIM

Senior Vice President

+1 808 387 3444

aprovenzano@chaneybrooks.com

ROCK S. TANG (S) JD

Senior Vice President

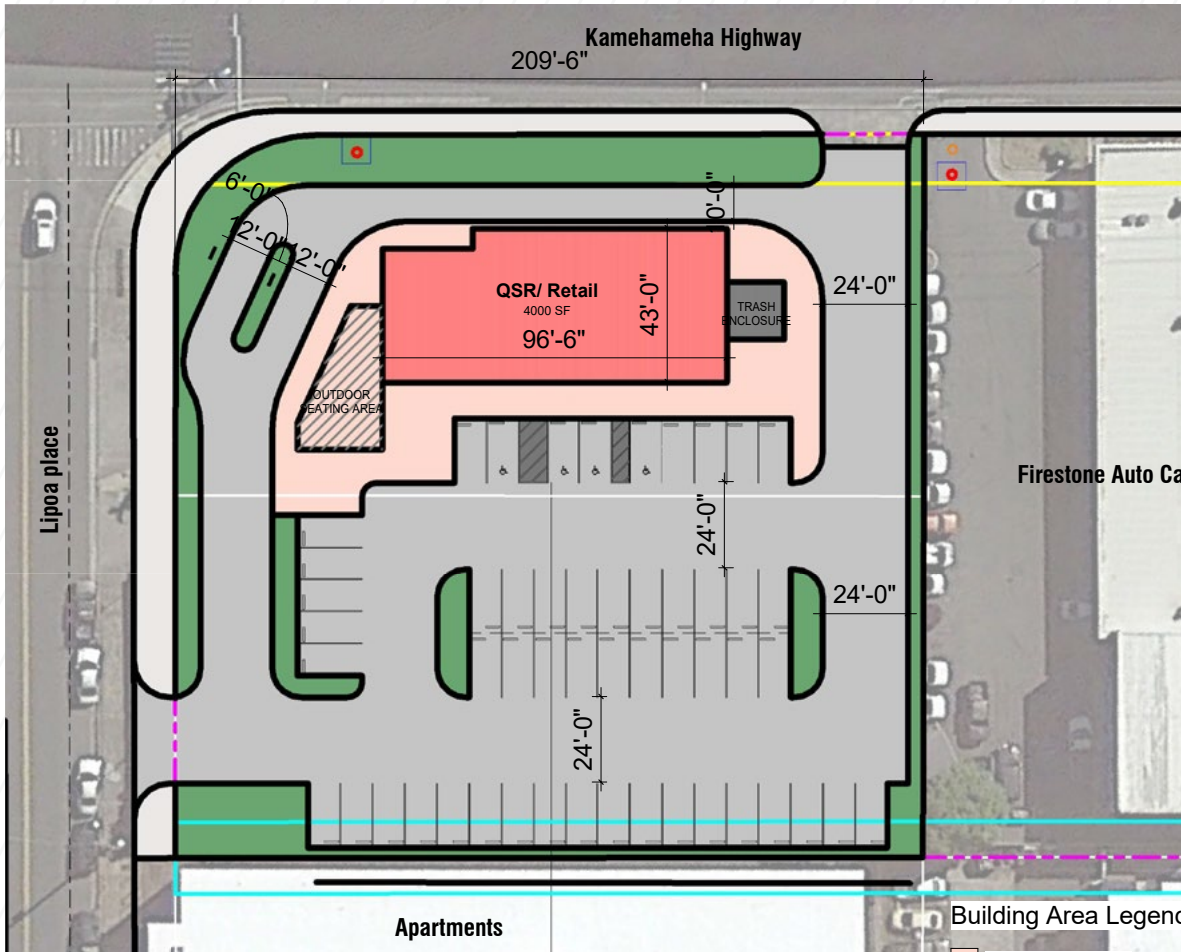
+1 808 321 0029

rtang@chaneybrooks.com



ChaneyBrooks

CONCEPTUAL PLAN



PROPERTY HIGHLIGHTS

- Located in the heart of the Aiea trade area
- Exceptional visibility and access off Kamehameha Hwy
- Close proximity to rail, TOD and Pearlridge Center
- Rare hard corner pad site opportunity in Aiea
- Located at fully signalized intersection with full movement
- Multiple access points on the property
- Long-term ground lease available

PROPERTY DETAILS

(1) 9-8-014: 18&19

TMK

41,656 SF

LAND
SIZE

BMX-3

ZONING

NEGOTIABLE

ASKING
RENT

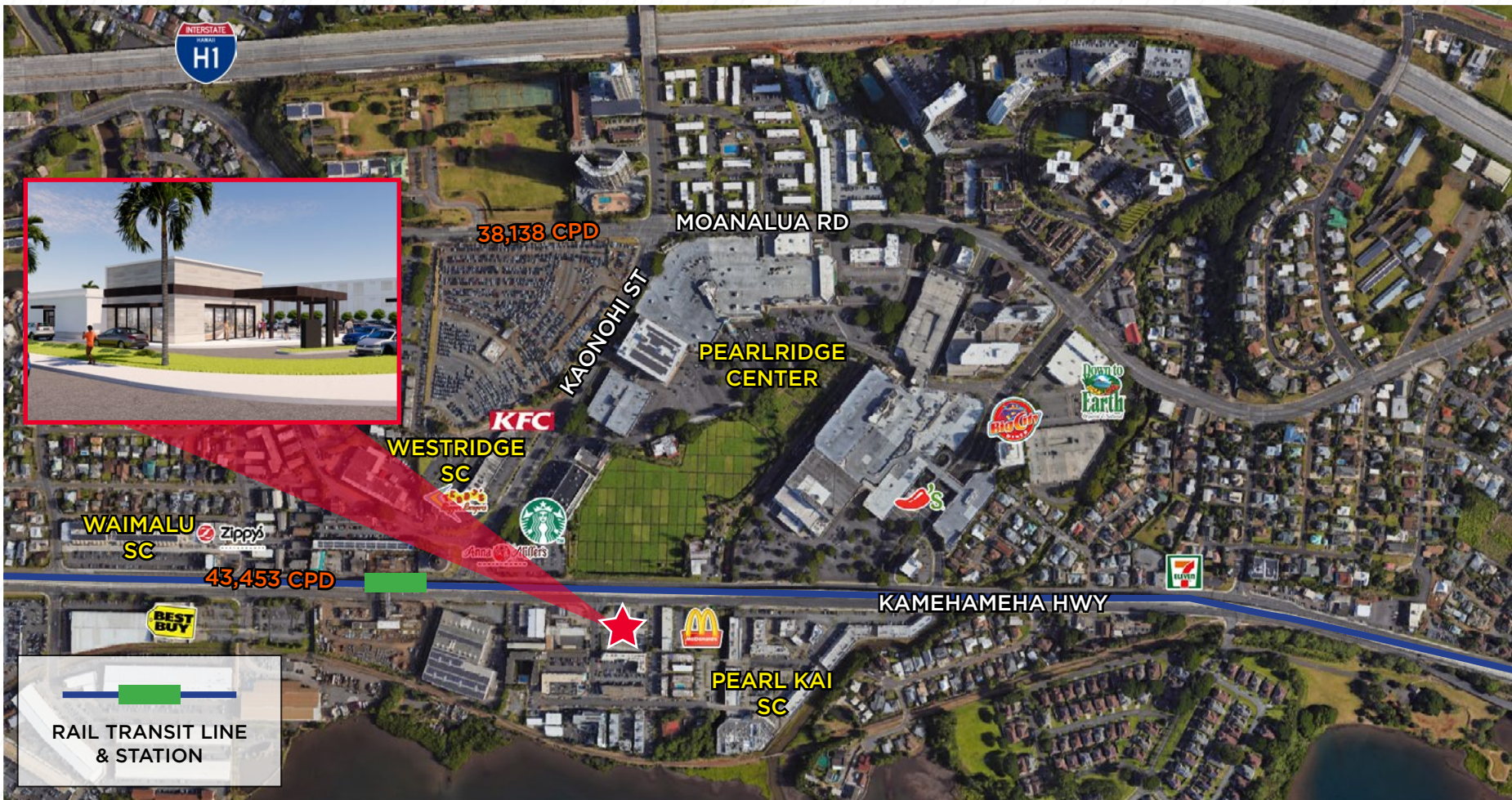
OCT. 2026

ANTICIPATED
DELIVERY

~\$46,000/YEAR

RPT
(LAND ONLY)

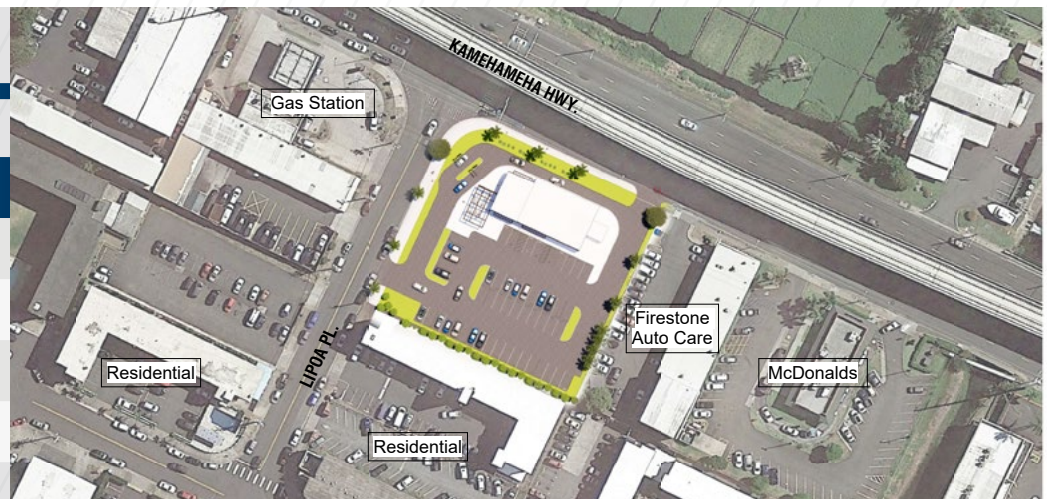




AERIAL

DEMOGRAPHICS

DEMOGRAPHICS	1-MILE	2-MILES	3-MILES
2022 POPULATION	17,362	62,900	102,652
2022 HOUSEHOLDS	6,643	19,860	31,189
AVG HH INCOME	\$98,376	\$117,750	\$117,362
MEDIAM HOME VALUE	\$483,767	\$681,344	\$709,312





ChaneyBrooks

ANTHONY PROVENZANO (B) SIOR, CCIM

Senior Vice President

+1 808 387 3444

aprovenzano@chaneybrooks.com

ROCK S. TANG (S) JD

Senior Vice President

+1 808 321 0029

rtang@chaneybrooks.com

1440 Kapiolani Boulevard,
Suite 1010

Honolulu, HI 96814

Main +1 808 544 1600

Fax +1 808 544 9574

chaneybrooks.com

©2023 CUSHMAN & WAKEFIELD CHANEYBROOKS. NO WARRANTY OR REPRESENTATION, EXPRESS OR IMPLIED, IS MADE TO THE ACCURACY OR COMPLETENESS OF THE INFORMATION CONTAINED HEREIN, AND SAME IS SUBMITTED SUBJECT TO ERRORS, OMISSIONS, CHANGE OF PRICE, RENTAL OR OTHER CONDITIONS, WITHDRAWAL WITHOUT NOTICE, AND TO ANY SPECIAL LISTING CONDITIONS IMPOSED BY THE PROPERTY OWNER(S). AS APPLICABLE, WE MAKE NO REPRESENTATION AS TO THE CONDITION OF THE PROPERTY (OR PROPERTIES) IN QUESTION.