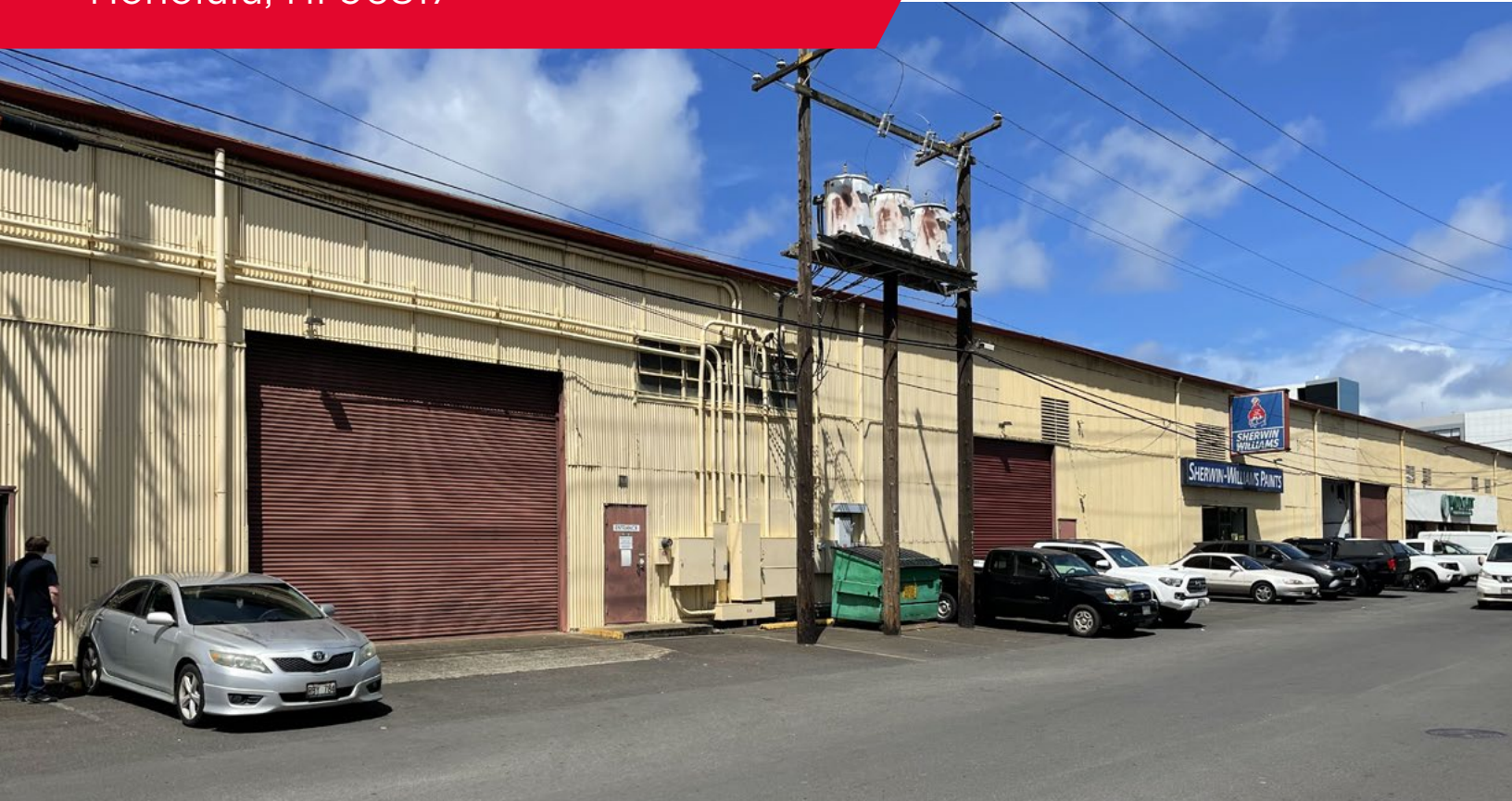


**FOR SUBLEASE
WAREHOUSE SPACE AVAILABLE**
429 WAIAKAMILO ROAD
Honolulu, HI 96817



PROPERTY DETAILS

Size	8,206 SF
Base Rent	\$9,436.90 (\$1.15/SF/Mo) w/ 4% annual increases
CAM	\$0.68/SF/Mo
Term	Til 6/30/2033
Parking	Available
Zoning	IMX-1

PROPERTY HIGHLIGHTS

- Central location with great accessibility
- High ceilings
- 1 roll-up door
- One sliding door opposite roll up door on interior side
- Approx. 1,000 sf of office space.
- 2 restrooms in space
- Existing racking could be made available for tenant's use

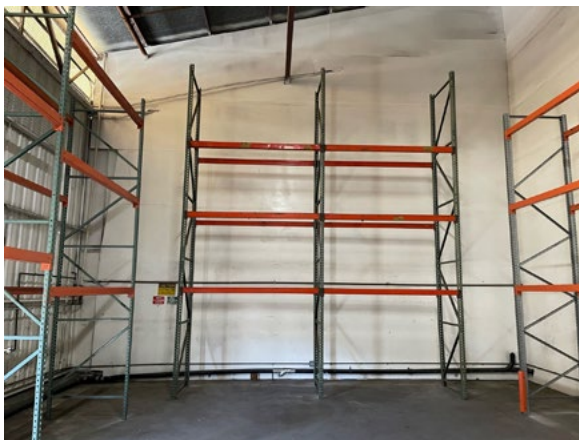
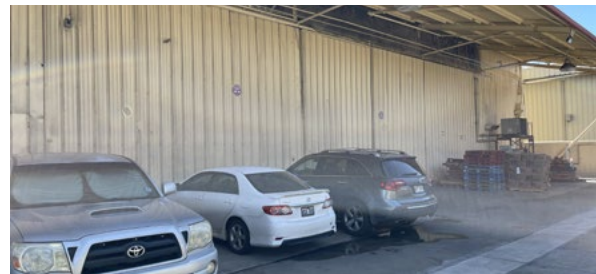
Contact

ROCK S. TANG (S) JD
Senior Vice President
+1 808 321 0029
rtang@chaneybrooks.com
RS-64894

JOHN T. RANKIN (S)
Real Estate Advisor
+1 808 265 8715
jrankin@chaneybrooks.com
RS-72384

1440 Kapiolani Blvd. Suite 1010
Honolulu, HI 96814
Main: +1 808 544 1600
Fax: +1 808 544 9574
RB-17805

**FOR SUBLEASE
WAREHOUSE SPACE AVAILABLE**
429 WAIAKAMILO ROAD
Honolulu, HI 96817



Contact

ROCK S. TANG (S) JD
Senior Vice President
+1 808 321 0029
rtang@chaneybrooks.com
RS-64894

JOHN T. RANKIN (S)
Real Estate Advisor
+1 808 265 8715
jrankin@chaneybrooks.com
RS-72384

1440 Kapiolani Blvd. Suite 1010
Honolulu, HI 96814
Main: +1 808 544 1600
Fax: +1 808 544 9574
RB-17805

Independently Owned and Operated / A Member of the Cushman & Wakefield Alliance
©2024 CUSHMAN & WAKEFIELD CHANEYBROOKS. NO WARRANTY OR REPRESENTATION, EXPRESS OR IMPLIED, IS MADE TO THE ACCURACY OR COMPLETENESS OF THE INFORMATION CONTAINED HEREIN, AND SAME IS SUBMITTED SUBJECT TO ERRORS, OMISSIONS, CHANGE OF PRICE, RENTAL OR OTHER CONDITIONS, WITHDRAWAL WITHOUT NOTICE, AND TO ANY SPECIAL LISTING CONDITIONS IMPOSED BY THE PROPERTY OWNER(S). AS APPLICABLE, WE MAKE NO REPRESENTATION AS TO THE CONDITION OF THE PROPERTY (OR PROPERTIES) IN QUESTION.