

**CUSHMAN &
WAKEFIELD**

ChaneyBrooks

FOR LEASE
808 544 1600

816

FOR LEASE

**816 QUEEN STREET
HONOLULU, HI 96813**

2,549 SF SECOND FLOOR

**PRIME DYNAMIC
LOCATION**

1440 Kapiolani Blvd., Ste 1010
Honolulu, HI 96814
Main +1 808 544 1600
Fax +1 808 544 9574
RB-17805
**cushmanwakefield.com
chaneybrooks.com**

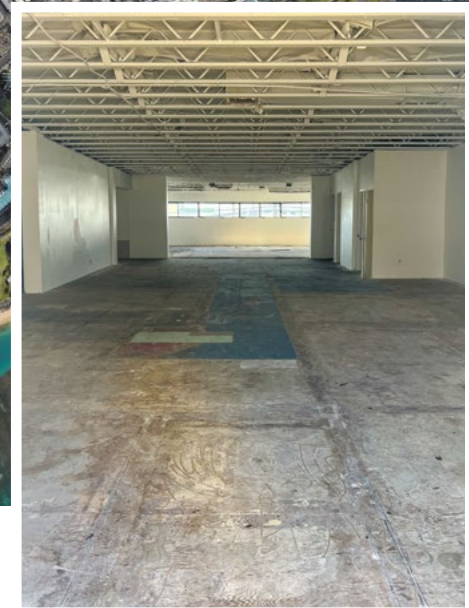
FOR LEASE

816 Queen Street Honolulu, HI 96813



CUSHMAN &
WAKEFIELD

ChaneyBrooks



Property Highlights

- Prime dynamic Kakaako location (between downtown and Ala Moana)
- Across from brewery and walking distance to restaurants, bars, cafes and shopping
- Potential for creative space, or showroom, open work concept
- Easy accessible, ingress and egress out of property
- Plenty of natural light on the second floor
- Ground floor potential as creative retail and storage space

Contact

ANN J. LIN (S)

Real Estate Advisor
+1 808 497 5449
alin@chaneybrooks.com
RS-70030

DANKA FABIANKOVICOVA (S)

Vice President
+1 808 544 1820
dfabiankovicova@chaneybrooks.com
RS-67466

Property Details

SECOND FLOOR	2,549 SF
BASE RENT	\$1.50/SF/Mo
CAM	\$0.82/SF/Mo
TERM	Negotiable
PARKING	2-6 Stalls

©2024 CUSHMAN & WAKEFIELD CHANEYBROOKS. NO WARRANTY OR REPRESENTATION, EXPRESS OR IMPLIED, IS MADE TO THE ACCURACY OR COMPLETENESS OF THE INFORMATION CONTAINED HEREIN, AND SAME IS SUBMITTED SUBJECT TO ERRORS, OMISSIONS, CHANGE OF PRICE, RENTAL OR OTHER CONDITIONS, WITHDRAWAL WITHOUT NOTICE, AND TO ANY SPECIAL LISTING CONDITIONS IMPOSED BY THE PROPERTY OWNER(S). AS APPLICABLE, WE MAKE NO REPRESENTATION AS TO THE CONDITION OF THE PROPERTY (OR PROPERTIES) IN QUESTION.