

1909 HOMERULE ST

HONOLULU, HI 96819



FOR LEASE

Located in Kalihi, the Premises offers secured open and covered yard spaces, with office spaces and restrooms at the front. Ideal for users who require vehicle parking or engage in outdoor manufacturing activities. No automotive use allowed.

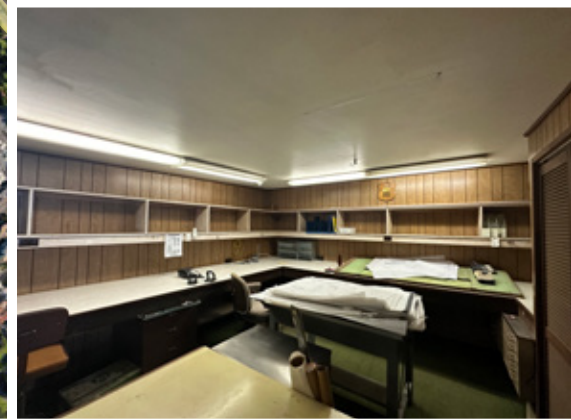
Tenant responsible to pay for their own electricity and water/sewer.

PROPERTY DETAILS

Land SF	9,414
Building SF	~6,000
	<ul style="list-style-type: none">• 3 office spaces• Reception area• 2 restrooms• Mezzanine storage• Racking and storage system
Base Rent	\$2.00/SF/MO
CAM	\$0.25/SF/MO
Zoning	I-2, Heavy Industrial
Term	5+ Years
Power	220 v, 220 amp, 3-phase*

** Tenants are advised to bring their own certified professionals to verify the condition of the electrical systems*





CONTACT US FOR MORE INFORMATION

ANTHONY PROVENZANO (B), CCIM, SIOR

+1 808 387 3444
aprovenzano@chaneybrooks.com

KELLY A. VEA (S)

+1 808 489 2703
kvea@chaneybrooks.com

ROBERT HUANG (S)

+1 808 358 6217
rhuang@chaneybrooks.com

1440 Kapiolani Boulevard, Suite 1010
Honolulu, Hawaii 96814

www.chaneybrooks.com

©2024 CUSHMAN & WAKEFIELD CHANEYBROOKS. ALL RIGHTS RESERVED. THE INFORMATION CONTAINED IN THIS COMMUNICATION IS STRICTLY CONFIDENTIAL. THIS INFORMATION HAS BEEN OBTAINED FROM SOURCES BELIEVED TO BE RELIABLE BUT HAS NOT BEEN VERIFIED. NO WARRANTY OR REPRESENTATION, EXPRESS OR IMPLIED, IS MADE AS TO THE CONDITION OF THE PROPERTY (OR PROPERTIES) REFERENCED HEREIN OR AS TO THE ACCURACY OR COMPLETENESS OF THE INFORMATION CONTAINED HEREIN, AND SAME IS SUBMITTED SUBJECT TO ERRORS, OMISSIONS, CHANGE OF PRICE, RENTAL OR OTHER CONDITIONS, WITHDRAWAL WITHOUT NOTICE, AND TO ANY SPECIAL LISTING CONDITIONS IMPOSED BY THE PROPERTY OWNER(S). ANY PROJECTIONS, OPINIONS OR ESTIMATES ARE SUBJECT TO UNCERTAINTY AND DO NOT SIGNIFY CURRENT OR FUTURE PROPERTY PERFORMANCE.