

1052 WAIMANU ST

HONOLULU, HI 96814



ChaneyBrooks



PROPERTY DETAILS



Address	1052 Waimanu St Honolulu, HI 96814
Building Size	1st floor 7,127 SF 2nd floor 6,631 SF Total 13,758 SF
Base Rent	\$1.50/SF/MO
Term	3+ Years
Zoning	KAK
Available	Immediately



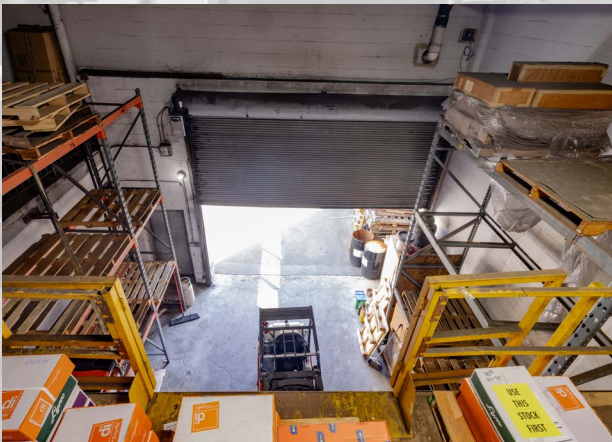
PROPERTY FEATURES



Private offices and
conference rooms



Temperature controlled
storage space



Roll up door



Heavy electrical capacity*



Yard and parking
fronting the building

**To be verified by an electrician of
Tenant's choice*



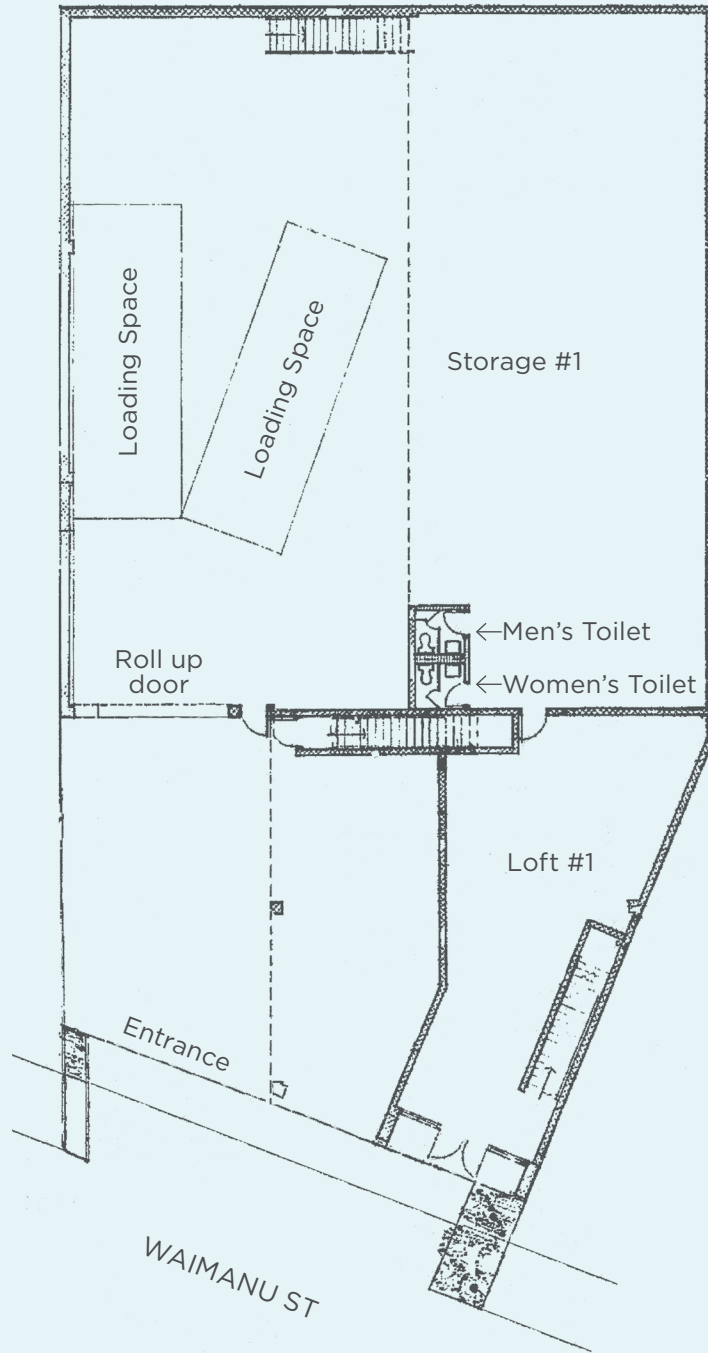
DESCRIPTION

Located in the heart of Kaka’ako, this standalone building offers a versatile and functional space for a wide variety of businesses. Situated just minutes away from Ala Moana Center and Ward Village, this property provides easy access to major roads and highways, making it an ideal hub for businesses in need of a central location.

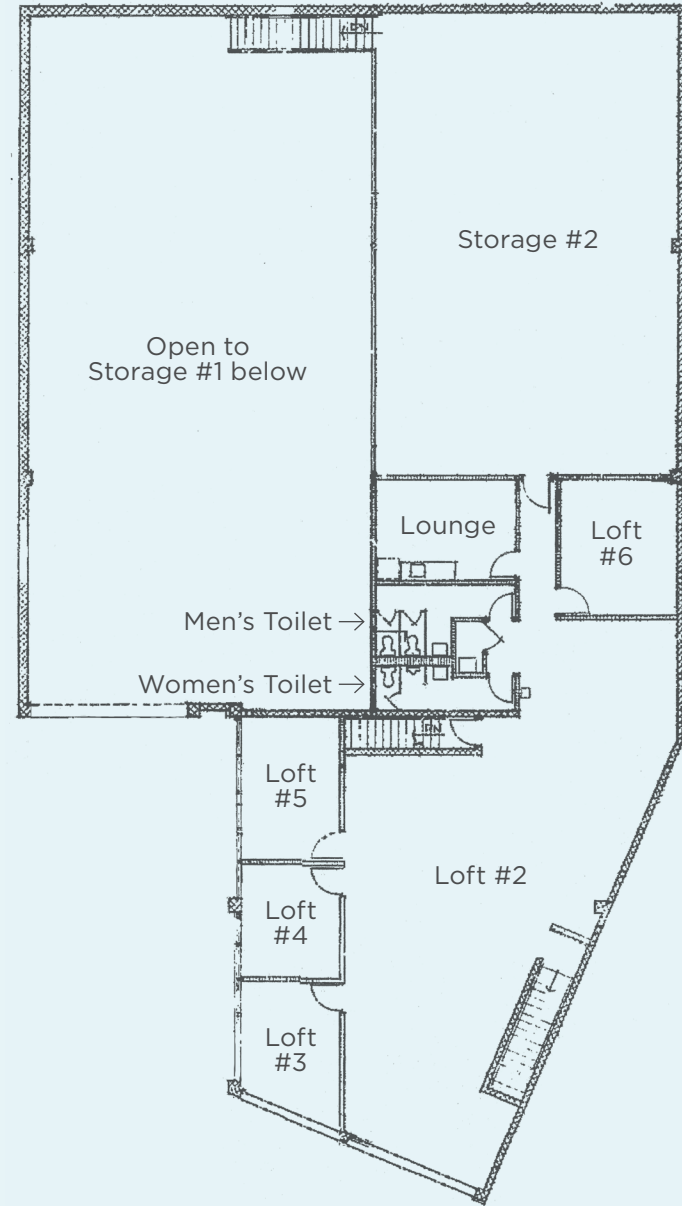


SITE PLANS

FIRST FLOOR



SECOND FLOOR





CONTACT US FOR MORE INFORMATION

ANTHONY PROVENZANO (B), CCIM, SIOR
+1 808 387 3444
aprovenzano@chaneybrooks.com

KELLY A. VEA (S)
+1 808 489 2703
kvea@chaneybrooks.com



ChaneyBrooks

1440 Kapiolani Blvd, Suite 1010
Honolulu, Hawaii 96814

www.chaneybrooks.com

©2024 CUSHMAN & WAKEFIELD CHANEYBROOKS. NO WARRANTY OR REPRESENTATION, EXPRESS OR IMPLIED, IS MADE TO THE ACCURACY OR COMPLETENESS OF THE INFORMATION CONTAINED HEREIN, AND SAME IS SUBMITTED SUBJECT TO ERRORS, OMISSIONS, CHANGE OF PRICE, RENTAL OR OTHER CONDITIONS, WITHDRAWAL WITHOUT NOTICE, AND TO ANY SPECIAL LISTING CONDITIONS IMPOSED BY THE PROPERTY OWNER(S). AS APPLICABLE, WE MAKE NO REPRESENTATION AS TO THE CONDITION OF THE PROPERTY (OR PROPERTIES) IN QUESTION.