

99-1342 KOAHA PLACE

AIEA, HI 96701

OWNER-USER OPPORTUNITY



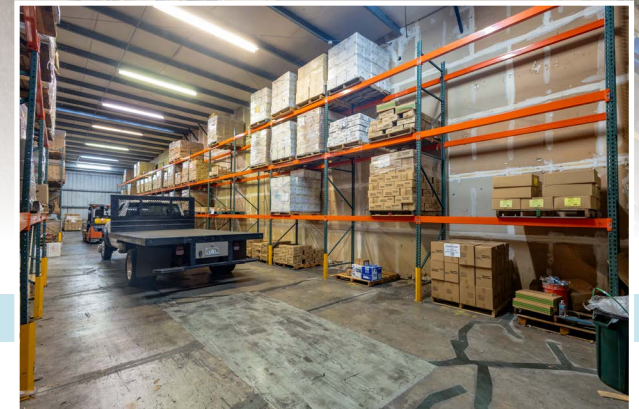
ChaneyBrooks



PROPERTY DETAILS

ASKING PRICE	\$750,000
ADDRESS	99-1342 Koaha Pl Aiea, HI 96701
TAX MAP KEY	1-9-9-77-22
2024 PROPERTY TAX	\$32,566.12
TENURE	Leasehold
GROUND LEASE EXPIRATION	December 31, 2046
GROUND RENT	\$10,944.17/Month*
BUILDING SIZE	12,342 SF
LAND AREA	20,801 SF
YEAR BUILT	1991
ZONING	I-2 Intensive Industrial District

*This is approximate and will adjust according to the base ground lease terms.



INVESTMENT HIGHLIGHTS

Owner-User or Investment Opportunity

This building offers flexibility with a portion already leased to a reputable tenant, ensuring stable cash flow. The owner can choose to occupy the remaining unit or lease it out to generate additional income.

Building Features

The property consists of two (2) high cube warehouses (17' Clear Height), plus mezzanine storage space. Each unit offers a private office space, reception area, and multiple restrooms, providing a complete solution for various business needs.

Roll Up Doors

Two (2) Doors Approximately 12' wide x 14' high.

Parking

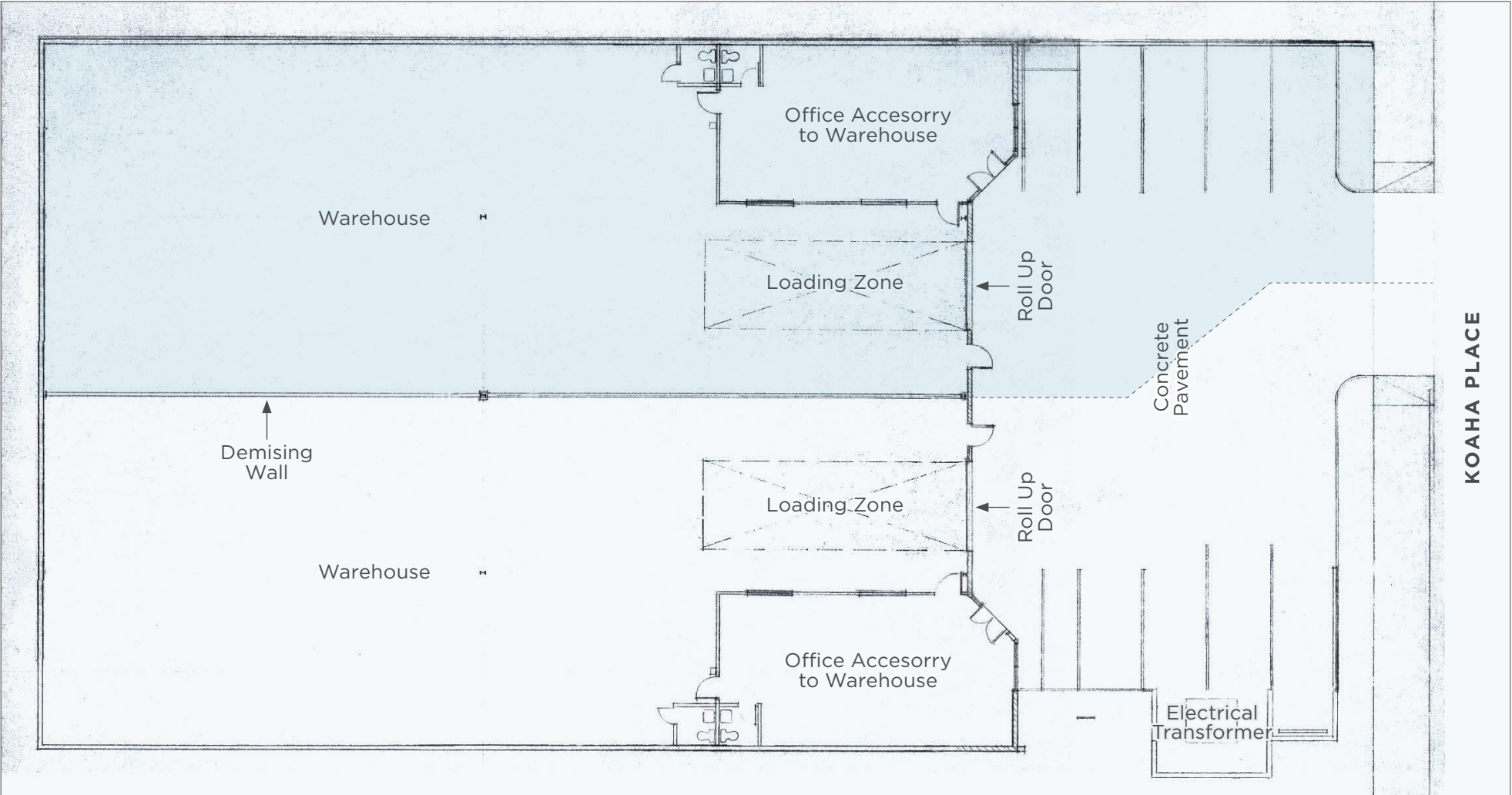
Ten (10) dedicated parking stalls, with additional street parking available.

Convenient Location

Located in Halawa Industrial Park with easy access to Camp Smith, Pearl Harbor, and the H-1, H-2, H-3 interchanges.

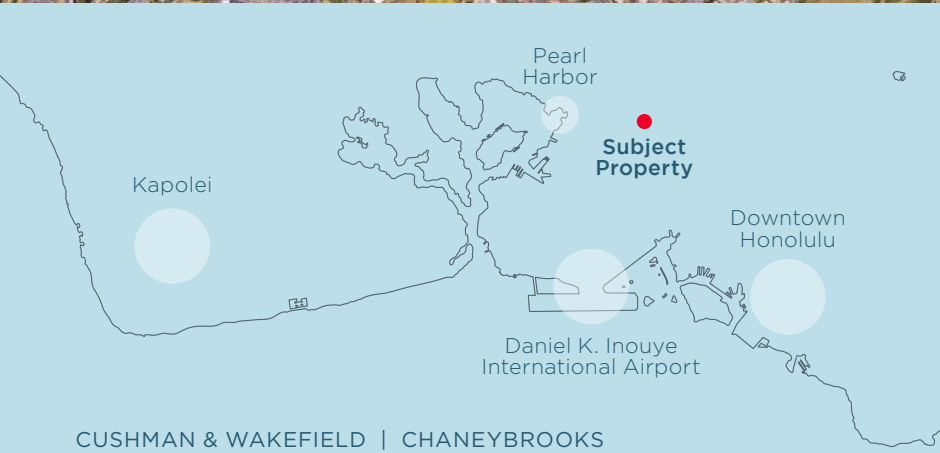
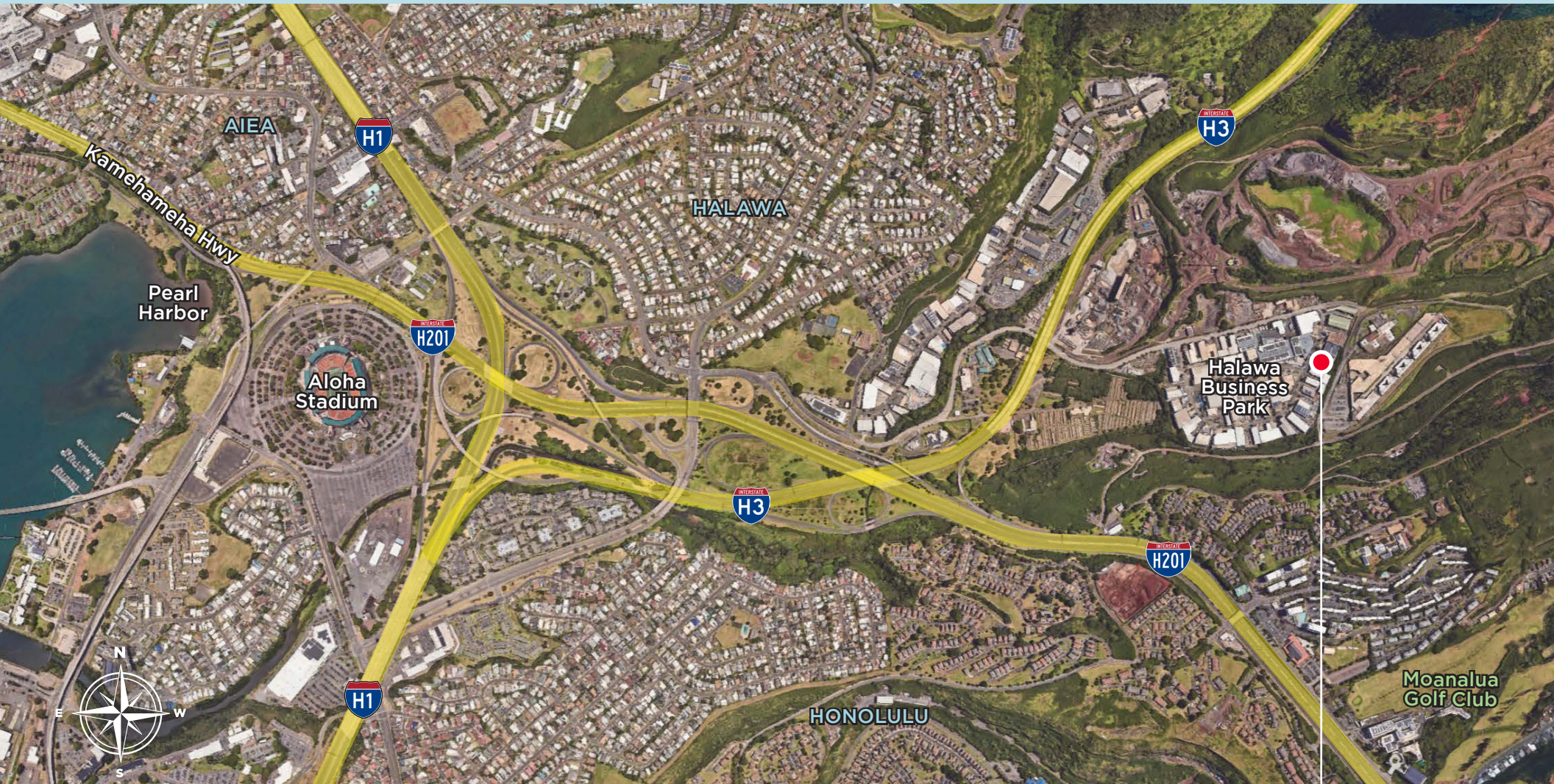


SITE PLAN



Leased Through
05/31/2029

Project Design Inc., Chaney, Brooks & Company LLC, and Owner disclaim any liability arising out of your use or reliance upon these building plans. These building plans are preliminary in nature and may be required to be reviewed and approved by a licensed architect and/or registered engineer before construction is commenced. Project Design Inc., Chaney, Brooks & Company LLC, and Owner do not represent or warrant that these building plans meet or comply with current building codes of any county in the State of Hawaii. Your use of these building plans is at your own risk. You are assuming all risk and losses arising from the use and reliance upon these building plans.



99-1342
Koaha Place

Located just off the H-1 freeway in Halawa Business Park with easy access to all 3 major freeways in both directions. 10 minutes from the Daniel K. Inouye International Airport, 15 minutes from Downtown Honolulu's central business district and only 20 minutes from Kapolei.



CONTACT US FOR MORE INFORMATION

ANTHONY PROVENZANO (B), CCIM, SIOR
+1 808 387 3444
aprovenzano@chaneybrooks.com

KELLY A. VEA (S), CCIM
+1 808 489 2703
kvea@chaneybrooks.com

TREVOR BLAKE (S)
+1 808 778 7409
tblake@chaneybrooks.com

1440 Kapiolani Blvd, Suite 1010
Honolulu, Hawaii 96814
www.chaneybrooks.com