

926 KOHOU ST • UNIT D

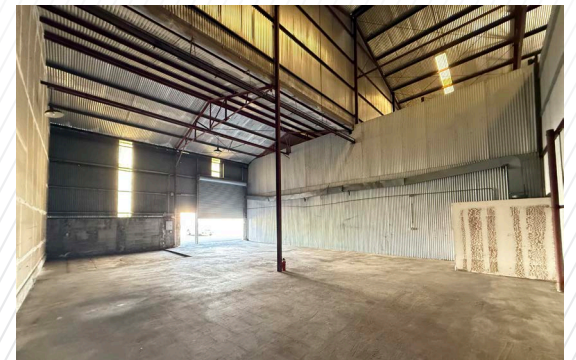
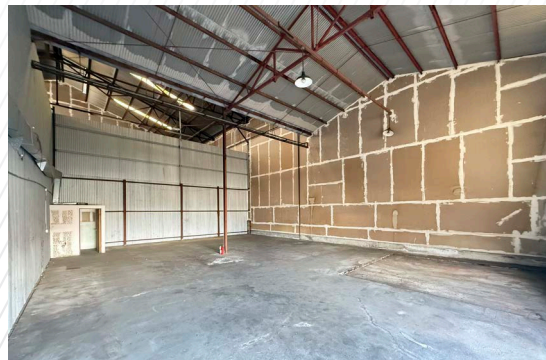
HONOLULU, HI 96817



Located in the heart of Kapālama, this 1,820 SF warehouse offers I-2 zoning, making it ideal for industrial or commercial use. Featuring a roll-up door for easy access and ceilings up to 28 feet high, the space is well-positioned near Nimitz Highway, H-1 Freeway, and Honolulu Harbor, providing seamless connectivity for logistics, storage, or business operations.

Property Summary

ADDRESS	926 Kohou St, Unit D Honolulu, HI 96817
SIZE	1,820 SF
BASE RENT	\$1.55/SF/MO
CAM	\$0.36/SF/MO
RPT	\$0.29/SF/MO
PARKING	2 Stalls





CONTACT US FOR MORE INFORMATION

ANTHONY PROVENZANO (B), CCIM, SIOR
 +1 808 387 3444
 aprovenzano@chaneybrooks.com

KELLY A. VEA (S), CCIM
 +1 808 489 2703
 kvea@chaneybrooks.com

TREVOR BLAKE (S)
 +1 808 778 7409
 tblake@chaneybrooks.com

1440 Kapiolani Blvd, Suite 1010
 Honolulu, Hawaii 96814
www.chaneybrooks.com



©2025 CUSHMAN & WAKEFIELD CHANEYBROOKS. NO WARRANTY OR REPRESENTATION, EXPRESS OR IMPLIED, IS MADE TO THE ACCURACY OR COMPLETENESS OF THE INFORMATION CONTAINED HEREIN, AND SAME IS SUBMITTED SUBJECT TO ERRORS, OMISSIONS, CHANGE OF PRICE, RENTAL OR OTHER CONDITIONS, WITHDRAWAL WITHOUT NOTICE, AND TO ANY SPECIAL LISTING CONDITIONS IMPOSED BY THE PROPERTY OWNER(S). AS APPLICABLE, WE MAKE NO REPRESENTATION AS TO THE CONDITION OF THE PROPERTY (OR PROPERTIES) IN QUESTION.



ChaneyBrooks