

# 926 KOHOU ST • UNIT D

HONOLULU, HI 96817

FOR LEASE

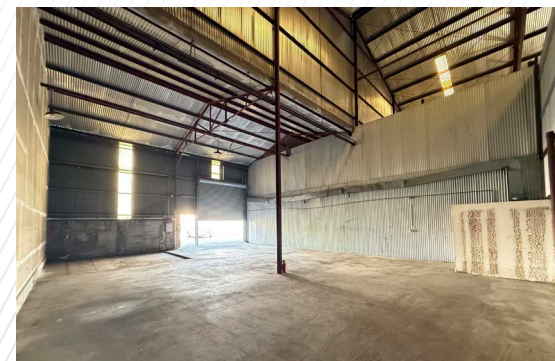
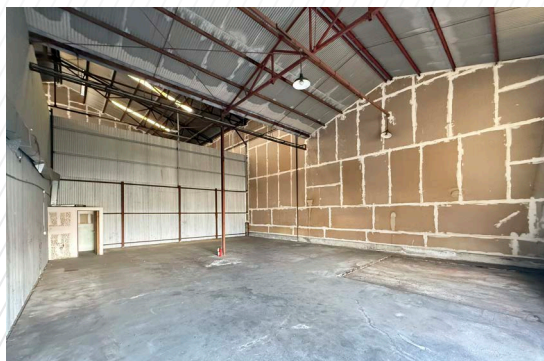




Located in the heart of Kapālama, this 1,820 SF warehouse offers I-2 zoning, making it ideal for industrial or commercial use. Featuring a roll-up door for easy access and ceilings up to 28 feet high, the space is well-positioned near Nimitz Highway, H-1 Freeway, and Honolulu Harbor, providing seamless connectivity for logistics, storage, or business operations.

## Property Summary

<b>ADDRESS</b>	926 Kohou St, Unit D Honolulu, HI 96817
<b>SIZE</b>	1,820 SF
<b>BASE RENT</b>	\$1.55/SF/MO
<b>CAM</b>	\$0.36/SF/MO
<b>RPT</b>	\$0.29/SF/MO
<b>PARKING</b>	2 Stalls







CONTACT US FOR MORE INFORMATION

**ANTHONY PROVENZANO** (B), CCIM, SIOR  
+1 808 387 3444  
aprovenzano@chaneybrooks.com

**KELLY A. VEA** (S), CCIM  
+1 808 489 2703  
kvea@chaneybrooks.com

**TREVOR BLAKE** (S)  
+1 808 778 7409  
tblake@chaneybrooks.com

1440 Kapiolani Blvd, Suite 1010  
Honolulu, Hawaii 96814  
[www.chaneybrooks.com](http://www.chaneybrooks.com)



©2025 CUSHMAN & WAKEFIELD CHANEYBROOKS. NO WARRANTY OR REPRESENTATION, EXPRESS OR IMPLIED, IS MADE TO THE ACCURACY OR COMPLETENESS OF THE INFORMATION CONTAINED HEREIN, AND SAME IS SUBMITTED SUBJECT TO ERRORS, OMISSIONS, CHANGE OF PRICE, RENTAL OR OTHER CONDITIONS, WITHDRAWAL WITHOUT NOTICE, AND TO ANY SPECIAL LISTING CONDITIONS IMPOSED BY THE PROPERTY OWNER(S). AS APPLICABLE, WE MAKE NO REPRESENTATION AS TO THE CONDITION OF THE PROPERTY (OR PROPERTIES) IN QUESTION.



ChaneyBrooks