



ChaneyBrooks



WAREHOUSE SPACE AVAILABLE FOR LEASE

Unit 114 | 99-899 Iwaena St
AIEA, HAWAII 96701



Located at 99-899 Iwaena St, Unit 114, this industrial space offers 2,425 square feet of versatile workspace in an I-2 zoned property. Featuring a convenient roll-up door for easy loading and unloading, this unit is ideal for industrial, warehouse, or distribution use. Centrally located, it provides easy access for both east- and westbound travel, making logistics and transportation more efficient. The base rent is competitively priced at \$1.50 per square foot per month, with an additional CAM charge of \$0.81 per square foot per month. Positioned in a well-established industrial area, this space provides practical functionality for businesses looking for efficiency and accessibility.

UNIT	: 114
SF	: 2,425
BASE RENT:	\$1.50/SF/MO
CAM	: \$0.81/SF/MO
ZONING	: I-2
TMK	: 1-9-9-72-30

CONTACT US FOR MORE INFORMATION

ANTHONY PROVENZANO (B), CCIM, SIOR

+1 808 387 3444
aprovenzano@chaneybrooks.com

KELLY A. VEA (S), CCIM

+1 808 489 2703
kvea@chaneybrooks.com

TREVOR BLAKE (S)

+1 808 778 7409
tblake@chaneybrooks.com

1440 Kapiolani Boulevard, Suite 1010
Honolulu, Hawaii 96814

www.chaneybrooks.com

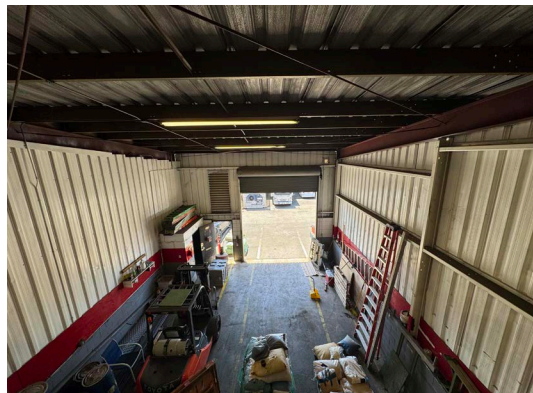
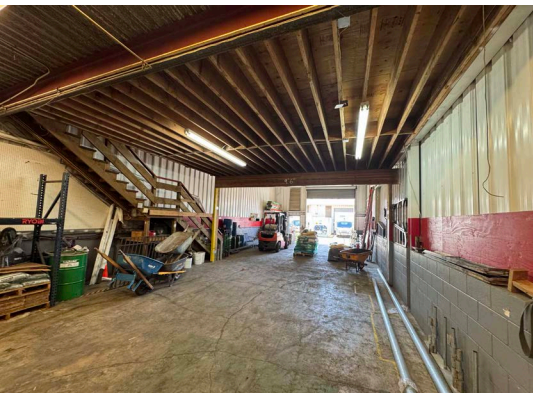


ChaneyBrooks

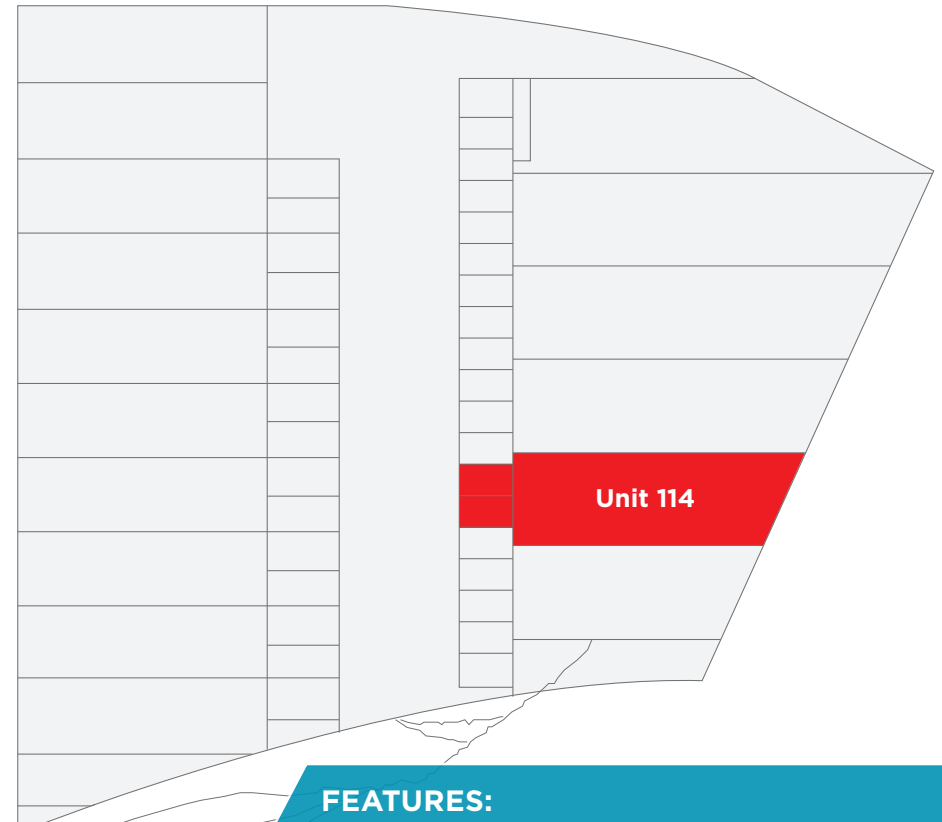


WAREHOUSE SPACE AVAILABLE FOR LEASE

Unit 114 | 99-899 Iwaena St
AIEA, HAWAII 96701



Iwaena St



FEATURES:

- 1 Roll Up Door: 8.5' wide x 13.5' high
- Ceiling Height: Ranging from 16' - 20'

CONTACT US FOR MORE INFORMATION

ANTHONY PROVENZANO (B), CCIM, SIOR

+1 808 387 3444
aprovenzano@chaneybrooks.com

KELLY A. VEA (S), CCIM

+1 808 489 2703
kvea@chaneybrooks.com

TREVOR BLAKE (S)

+1 808 778 7409
tblake@chaneybrooks.com

1440 Kapiolani Boulevard, Suite 1010
Honolulu, Hawaii 96814

www.chaneybrooks.com