

WAIKELE STORAGE PARK

94-990 PAKELA ST, WAIPAHU, HI 96797

FOR SALE



ChaneyBrooks

D1
3,886 SF

D2
3,975 SF

D6
3,884 SF

D12
3,890 SF

D BUNKERS

The Bunkers available for sale at Waikēle Storage Park offer an exceptional opportunity to purchase secure, versatile storage space in a prime location with easy access to major freeways. Ranging from 3,884 SF to 3,975 SF, these units provide ample room for both personal and business storage needs, offering a low barrier to entry for those seeking reliable and affordable storage solutions. Whether you're storing equipment, inventory, or other valuables, these bunkers provide a flexible, secure space ideal for long-term or short-term use. Perfect for small businesses or individuals, this is an excellent investment opportunity. For more information, please contact **ProTeam Hawaii**.

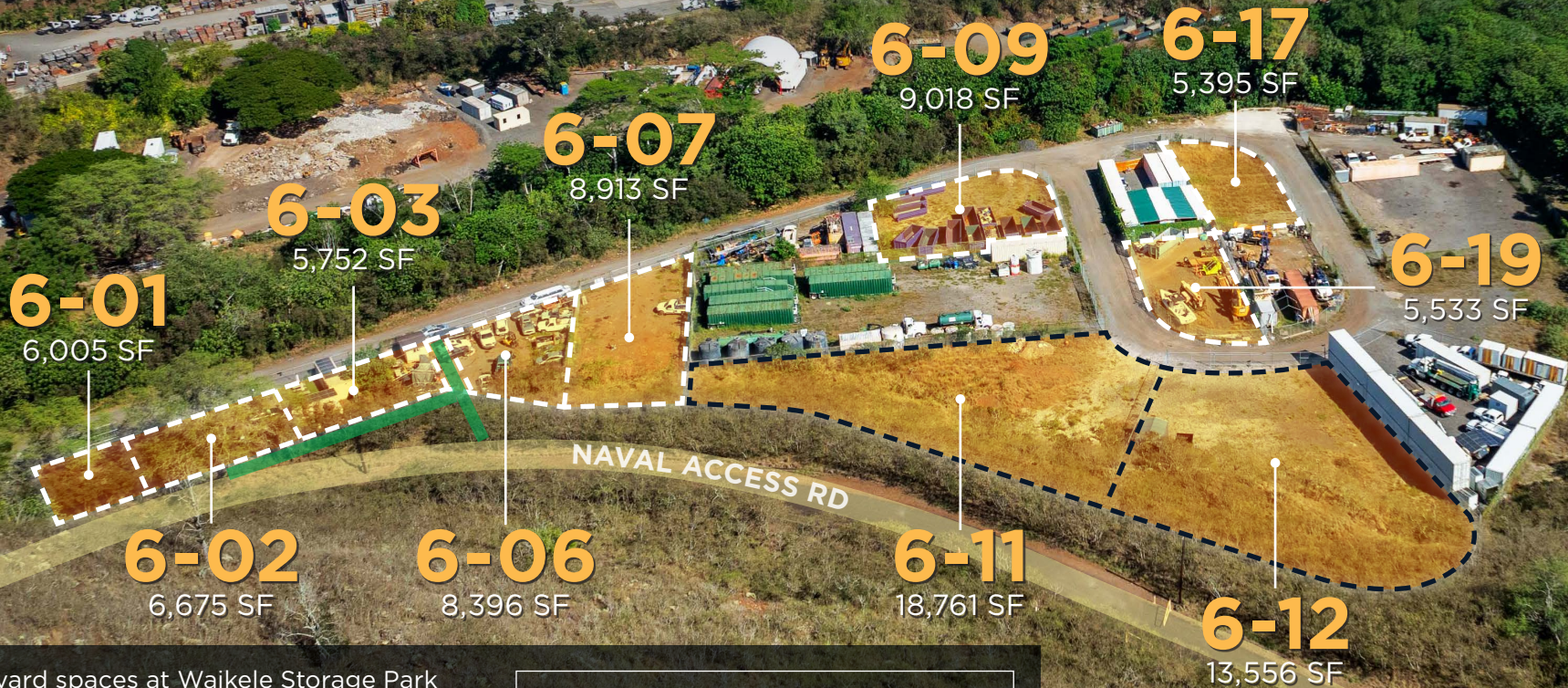
\$375,000 Per Bunker



Climate Controlled Bunkers

Disclaimer: The outlines of specific lots provided in this fact sheet are approximate and should not be considered exact.

SITE 6



The yard spaces at Waikale Storage Park present an excellent opportunity to secure convenient, flexible storage for both business and personal use, all with a low barrier to entry. Some yards feature fenced, graded areas, while others offer the purchaser the opportunity to build the space that fits their specific storage needs. Whether you require storage for equipment, vehicles, or other uses, these yards provide both functionality and adaptability. For more information, please contact ProTeam Hawaii.

Lot Name	Square Footage	Price Per SF	Sale Price
6-01	6,005	\$35.00	\$210,175
6-02	6,675	\$35.00	\$233,625
6-03	5,752	\$35.00	\$201,320
6-06	8,396	\$35.00	\$293,860
6-07	8,913	\$35.00	\$311,955
6-09	9,018	\$35.00	\$315,630
6-11	18,761	\$35.00	\$656,635
6-12	13,556	\$35.00	\$474,460
6-17	5,395	\$35.00	\$188,825
6-19	5,533	\$35.00	\$193,655

Disclaimer: The outlines of specific lots provided in this fact sheet are approximate and should not be considered exact.

YARD AREA 1

YE-1

8,600 SF

NAVAL ACCESS RD

Lot Name	Square Footage	Price Per SF	Sale Price
YE-1	8,600	\$35.00	\$301,000

Disclaimer: The outlines of specific lots provided in this fact sheet are approximate and should not be considered exact.

SITE 7



Lot Name	Square Footage	Price Per SF	Sale Price
7-06	11,249	\$35.00	\$393,715
7-07	11,162	\$35.00	\$390,670
7-08	11,170	\$35.00	\$390,950

Disclaimer: The outlines of specific lots provided in this fact sheet are approximate and should not be considered exact.

SITE 8

8-04

4,940 SF

8-01

9,397 SF

8-03

8,256 SF

Lot Name	Square Footage	Price Per SF	Sale Price
8-01	9,397	\$35.00	\$328,895
8-03	8,256	\$35.00	\$288,960
8-04	4,940	\$35.00	\$172,900

Disclaimer: The outlines of specific lots provided in this fact sheet are approximate and should not be considered exact.

WAIKELE STORAGE PARK

Royal Kunia Country Club

Waikēle Country Club

WAIKELE PREMIUM OUTLETS
A SIMON CENTER

Paiwa St

LOWE'S

WAIPAHU

Farrington Hwy

H2

H1

PEARL CITY

WAIKELE STORAGE PARK

Pearl Harbor

Honolulu

Daniel K. Inouye International Airport

CONTACT US FOR MORE INFORMATION

ANTHONY PROVENZANO (B), CCIM, SIOR

+1 808 387 3444

aprovenzano@chaneybrooks.com

KELLY A. VEA (S), CCIM

+1 808 489 2703

kvea@chaneybrooks.com

TREVOR BLAKE (S)

+1 808 778 7409

tblake@chaneybrooks.com

1440 Kapiolani Blvd, Suite 1010
Honolulu, Hawaii 96814

www.chaneybrooks.com