

# WAIKELE STORAGE PARK

94-990 PAKELA ST, WAIPAHU, HI 96797

**FOR SALE**



ChaneyBrooks

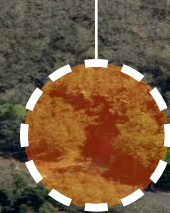


**D1**  
3,886 SF

**D2**  
3,975 SF

**D6**  
3,884 SF

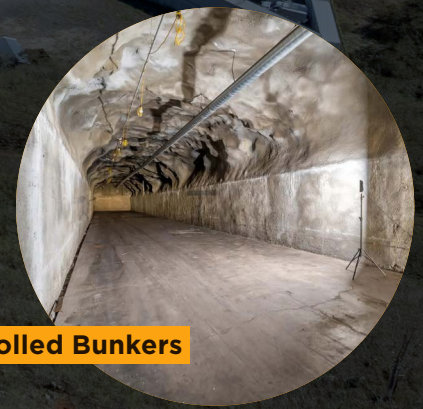
**D12**  
3,890 SF



# D BUNKERS

**\$350,000 Per Bunker**

The Bunkers available for sale at Waikēle Storage Park offer an exceptional opportunity to purchase secure, versatile storage space in a prime location with easy access to major freeways. Ranging from 3,884 SF to 3,975 SF, these units provide ample room for both personal and business storage needs, offering a low barrier to entry for those seeking reliable and affordable storage solutions. Whether you're storing equipment, inventory, or other valuables, these bunkers provide a flexible, secure space ideal for long-term or short-term use. Perfect for small businesses or individuals, this is an excellent investment opportunity. For more information, please contact **ProTeam Hawaii**.



**Climate Controlled Bunkers**

*Disclaimer: The outlines of specific lots provided in this fact sheet are approximate and should not be considered exact.*

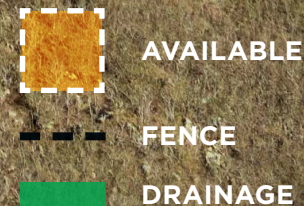


# SITE 6



The yard spaces at Waikele Storage Park present an excellent opportunity to secure convenient, flexible storage for both business and personal use, all with a low barrier to entry. Some yards feature fenced, graded areas, while others offer the purchaser the opportunity to build the space that fits their specific storage needs. Whether you require storage for equipment, vehicles, or other uses, these yards provide both functionality and adaptability. For more information, please contact ProTeam Hawaii.

Lot Name	Square Footage	Price Per SF	Sale Price
6-01	6,005	\$35.00	\$210,175
6-02	6,675	\$35.00	\$233,625
6-03	5,752	\$35.00	\$201,320
6-06	8,396	\$35.00	\$293,860
6-07	8,913	\$35.00	\$311,955
6-09	9,018	\$35.00	\$315,630
6-11	18,761	\$35.00	\$656,635
6-12	13,556	\$35.00	\$474,460
6-17	5,395	\$35.00	\$188,825
6-19	5,533	\$35.00	\$193,655

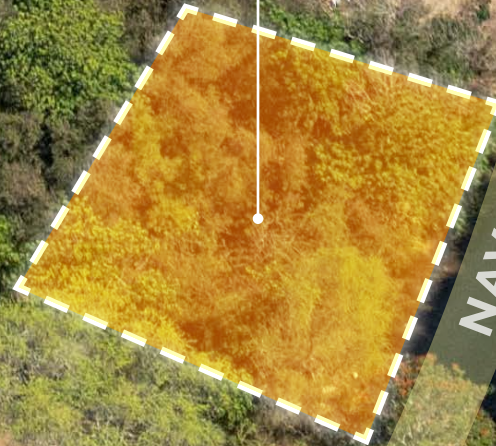


*Disclaimer: The outlines of specific lots provided in this fact sheet are approximate and should not be considered exact.*



# YARD AREA 1

**YE-1**  
8,600 SF



Lot Name	Square Footage	Price Per SF	Sale Price
YE-1	8,600	\$35.00	<b>\$301,000</b>

*Disclaimer: The outlines of specific lots provided in this fact sheet are approximate and should not be considered exact.*



# SITE 7



**7-08**

11,170 SF

**7-06**

11,249 SF

**7-07**

11,162 SF

Lot Name	Square Footage	Price Per SF	Sale Price
7-06	11,249	\$35.00	\$393,715
7-07	11,162	\$35.00	\$390,670
7-08	11,170	\$35.00	\$390,950

*Disclaimer: The outlines of specific lots provided in this fact sheet are approximate and should not be considered exact.*



# SITE 8

8-04

4,940 SF

8-01

9,397 SF

8-03

8,256 SF

Lot Name	Square Footage	Price Per SF	Sale Price
8-01	9,397	\$35.00	\$328,895
8-03	8,256	\$35.00	\$288,960
8-04	4,940	\$35.00	\$172,900

Disclaimer: The outlines of specific lots provided in this fact sheet are approximate and should not be considered exact.



# WAIKELE STORAGE PARK

Royal Kunia  
Country Club

Waikēle  
Country Club

WAIKELE  
PREMIUM OUTLETS  
A SIMON CENTER

LOWE'S

WAIPAHU

PEARL CITY

Farrington Hwy

Kamehameha Hwy

Paiwa St



CONTACT US FOR MORE INFORMATION

**ANTHONY PROVENZANO** (B), CCIM, SIOR  
+1 808 387 3444  
aprovenzano@chaneybrooks.com

**KELLY A. VEA** (S), CCIM  
+1 808 489 2703  
kvea@chaneybrooks.com

**TREVOR BLAKE** (S)  
+1 808 778 7409  
tblake@chaneybrooks.com

1440 Kapiolani Blvd, Suite 1010  
Honolulu, Hawaii 96814

[www.chaneybrooks.com](http://www.chaneybrooks.com)