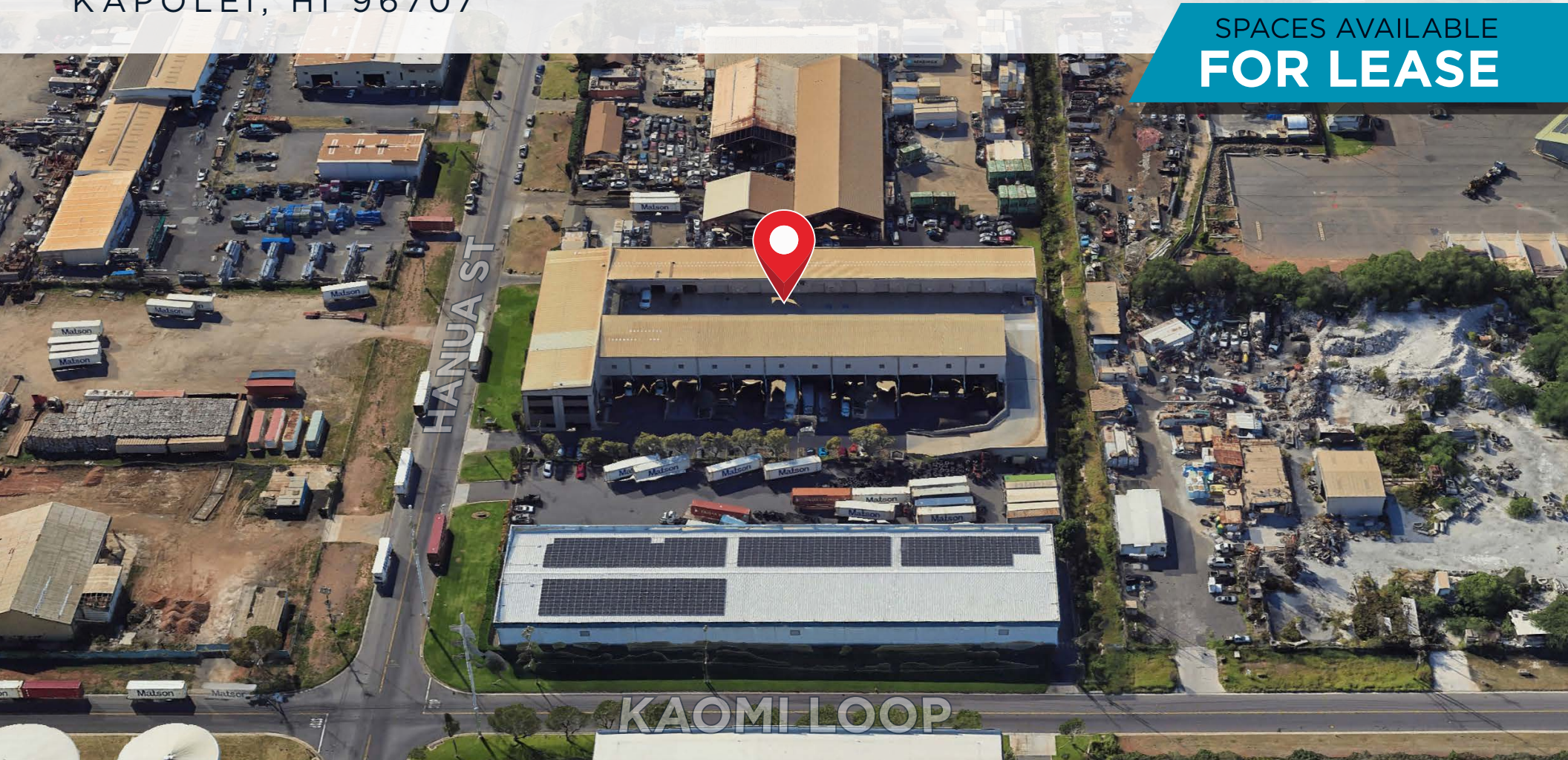


# 91-110 Hanua St

KAPOLEI, HI 96707

SPACES AVAILABLE  
**FOR LEASE**



ChaneyBrooks

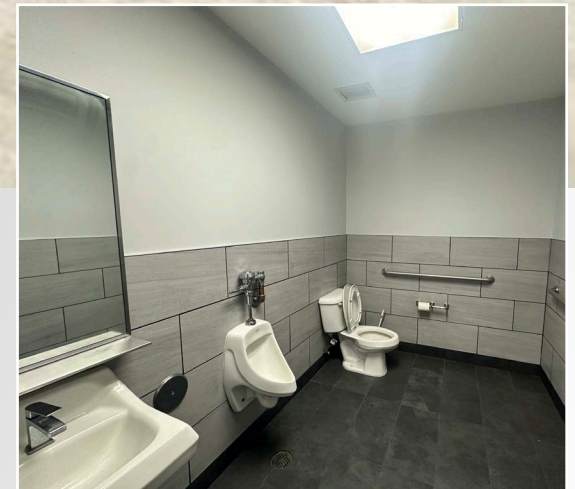


SPACE AVAILABLE:  
**UNIT 313**

- **1 Roll Up Door**
- **Renovated office spaces and private restrooms**
- **Corner Unit**
- **Equipped with 3 Phase Power**
- **18 - 14 Foot Ceiling Height**
- **Two Private Offices**

## Property Summary

<b>ADDRESS</b>	Unit 313 91-110 Hanua St Kapolei, HI 96707
<b>SIZE</b>	6,104 SF
<b>BASE RENT</b>	\$1.40 SF/MO
<b>CAM</b>	\$0.36 SF/MO
<b>ZONING</b>	I-2
<b>PARKING</b>	2 Reserved Stalls



SPACE AVAILABLE:  
**UNIT 321**



- **Parking fronting the space**
- **Abundant electrical in the warehouse**
- **New carpet throughout the office space**

- **Equipped with 3 Phase Power**
- **3 Roll Up Doors**
- **18 - 20 Foot Ceiling Height**



## Property Summary

<b>ADDRESS</b>	Unit 321 91-110 Hanua St Kapolei, HI 96707
<b>SIZE</b>	3,402 SF
• Warehouse	1,738 SF
• Office	1,664 SF
<b>BASE RENT</b>	\$1.55 SF/MO
<b>CAM</b>	\$0.36 SF/MO
<b>ZONING</b>	I-2
<b>PARKING</b>	9 Stalls



# 91-110 HANUA ST



CONTACT US FOR MORE INFORMATION

**ANTHONY PROVENZANO** (B), CCIM, SIOR  
+1 808 387 3444  
aprovenzano@chaneybrooks.com

**KELLY A. VEA** (S), CCIM  
+1 808 489 2703  
kvea@chaneybrooks.com

**TREVOR BLAKE** (S)  
+1 808 778 7409  
tblake@chaneybrooks.com

1440 Kapiolani Blvd, Suite 1010  
Honolulu, Hawaii 96814  
[www.chaneybrooks.com](http://www.chaneybrooks.com)