

# 917 KOKEA ST

HONOLULU, HI 96817

FOR LEASE



ChaneyBrooks



Situated in the heart of Honolulu's Kapālama Kai industrial district, 917 Kokea St offers a unique opportunity to occupy a versatile building on a 32,322 SF lot with Industrial Mixed-Use (IMX-1) zoning. Located within both an Opportunity Zone and Enterprise Zone. Conveniently located near key transportation routes—including Nimitz Highway, Honolulu Harbor, and the future rail station—this property is well-suited for warehouse, distribution, office, or mixed-use industrial operations. With its prime location and excellent connectivity, it presents a compelling opportunity for businesses seeking to establish or expand their presence in one of Oahu's most dynamic commercial hubs.

## Property Summary

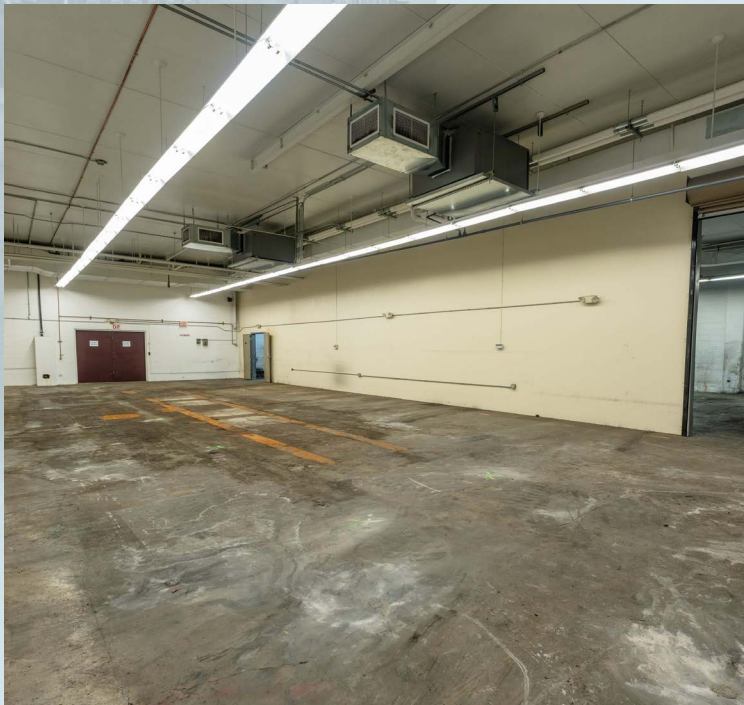
<b>ADDRESS</b>	917 Kokea St Honolulu, HI 96817
<b>BUILDING SIZE</b>	28,179 SF
<b>LAND SIZE</b>	32,322 SF
<b>BASE RENT</b>	Negotiable
<b>RPT</b>	\$0.29/SF/MO
<b>PARKING</b>	30+ Marked Stalls
<b>ZONING</b>	IMX-1





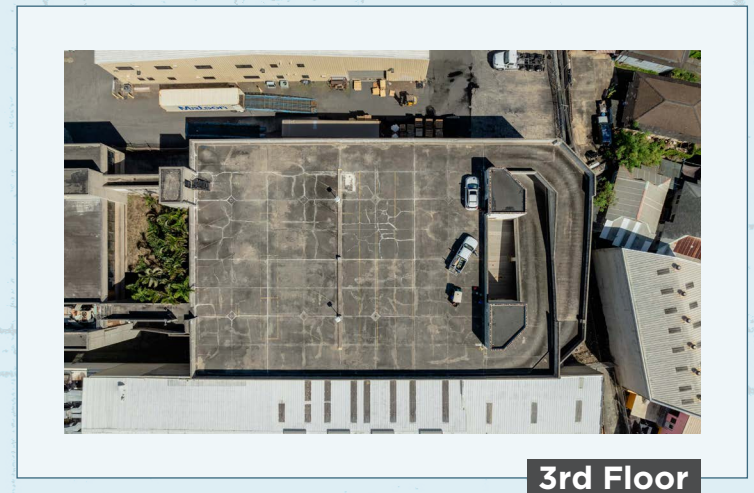
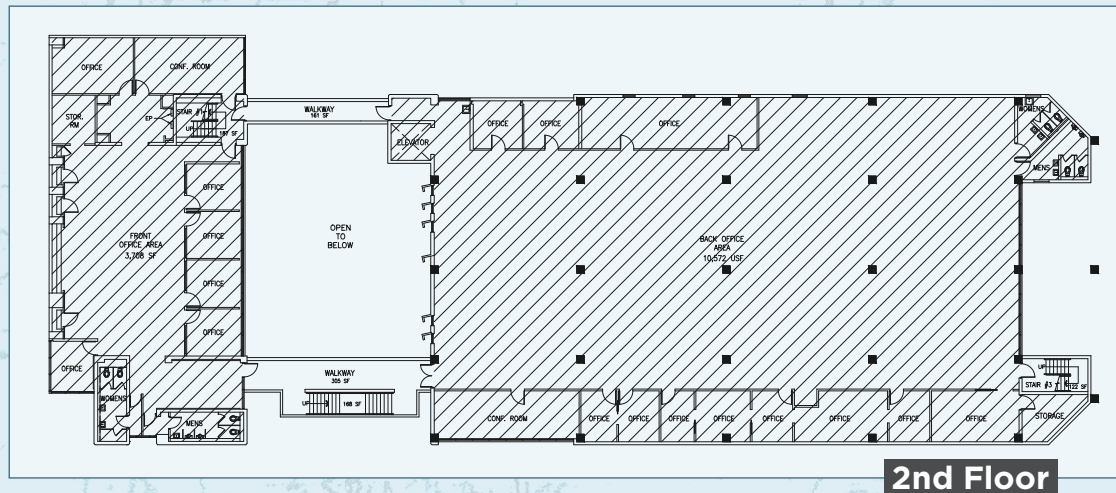
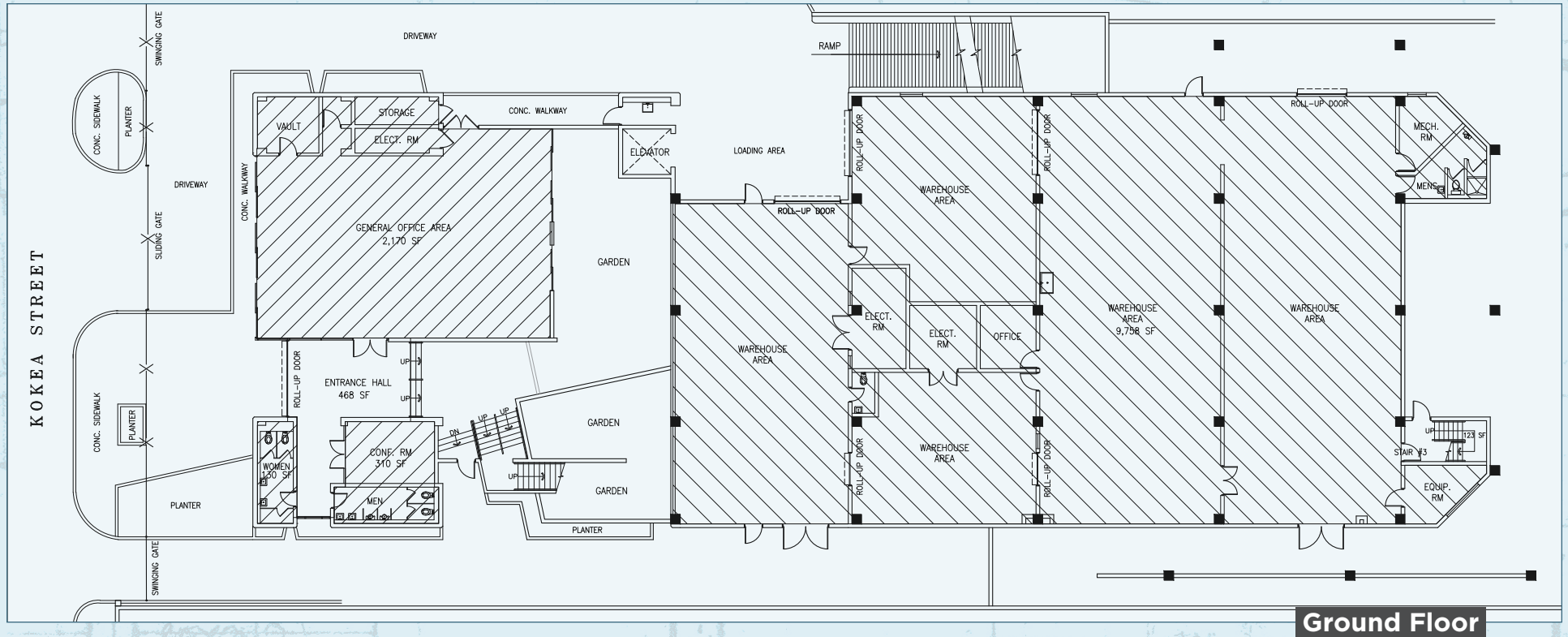








# Site Plans











CONTACT US FOR MORE INFORMATION

**ANTHONY PROVENZANO** (B), CCIM, SIOR  
+1 808 387 3444  
aprovenzano@chaneybrooks.com

**KELLY A. VEA** (S), CCIM  
+1 808 489 2703  
kvea@chaneybrooks.com

**TREVOR BLAKE** (S)  
+1 808 778 7409  
tblake@chaneybrooks.com

1440 Kapiolani Blvd, Suite 1010  
Honolulu, Hawaii 96814  
[www.chaneybrooks.com](http://www.chaneybrooks.com)



©2025 CUSHMAN & WAKEFIELD CHANEYBROOKS. NO WARRANTY OR REPRESENTATION, EXPRESS OR IMPLIED, IS MADE TO THE ACCURACY OR COMPLETENESS OF THE INFORMATION CONTAINED HEREIN, AND SAME IS SUBMITTED SUBJECT TO ERRORS, OMISSIONS, CHANGE OF PRICE, RENTAL OR OTHER CONDITIONS, WITHDRAWAL WITHOUT NOTICE, AND TO ANY SPECIAL LISTING CONDITIONS IMPOSED BY THE PROPERTY OWNER(S). AS APPLICABLE, WE MAKE NO REPRESENTATION AS TO THE CONDITION OF THE PROPERTY (OR PROPERTIES) IN QUESTION.



ChaneyBrooks