

94-1175 KA UKA BLVD BAY 2

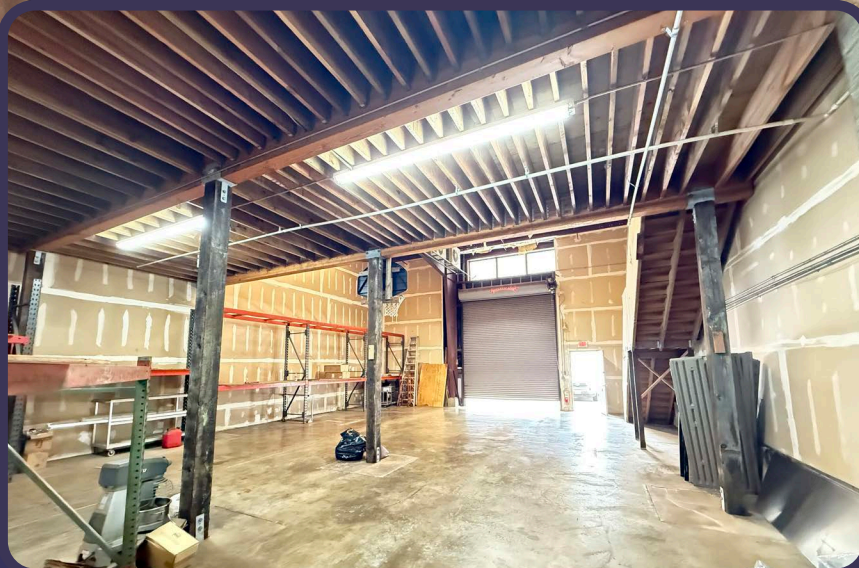
WAIPAHU, HI 96797



ChaneyBrooks

Located at 99-1175 Ka Uka Blvd, Bay 2 offers an open layout warehouse in central Oahu near Costco Waipio with excellent freeway access. The space features an automatic roll-up door, clear heights ranging from 11' under the mezzanine to 17'-20' on the high end, and includes a restroom and shower. With three assigned parking stalls, this warehouse is well-suited for a variety of industrial uses, from storage to light manufacturing or distribution.





Property Highlights

- Base Rent: \$1.63/SF/MO
- CAM: \$0.57/SF/MO
- SF: 2,088
- Zone: I-2
- Parking: 3 Stalls
- 1 Automatic Roll-Up Door
- Restroom and Shower
- Excellent Freeway Access



CUSHMAN &
WAKEFIELD

ChaneyBrooks



94-1175 KA UKA BLVD BAY 2

WAIPAHU, HI 96797

CONTACT US
FOR MORE INFORMATION

ANTHONY PROVENZANO (B), CCIM, SIOR

HI LIC RB-22101

+1 808 387 3444

aprovenzano@chaneybrooks.com

KELLY A. VEA (S), CCIM

HI LIC RS-79079

+1 808 489 2703

kvea@chaneybrooks.com

TREVOR BLAKE (S)

HI LIC RS-87251

+1 808 489 2703

tblake@chaneybrooks.com

1440 Kapiolani Blvd, Suite 1010
Honolulu, Hawaii 96814

www.chaneybrooks.com

©2025 CUSHMAN & WAKEFIELD CHANEYBROOKS. NO WARRANTY OR REPRESENTATION, EXPRESS OR IMPLIED, IS MADE TO THE ACCURACY OR COMPLETENESS OF THE INFORMATION CONTAINED HEREIN, AND SAME IS SUBMITTED SUBJECT TO ERRORS, OMISSIONS, CHANGE OF PRICE, RENTAL OR OTHER CONDITIONS, WITHDRAWAL WITHOUT NOTICE, AND TO ANY SPECIAL LISTING CONDITIONS IMPOSED BY THE PROPERTY OWNER(S). AS APPLICABLE, WE MAKE NO REPRESENTATION AS TO THE CONDITION OF THE PROPERTY (OR PROPERTIES) IN QUESTION.