

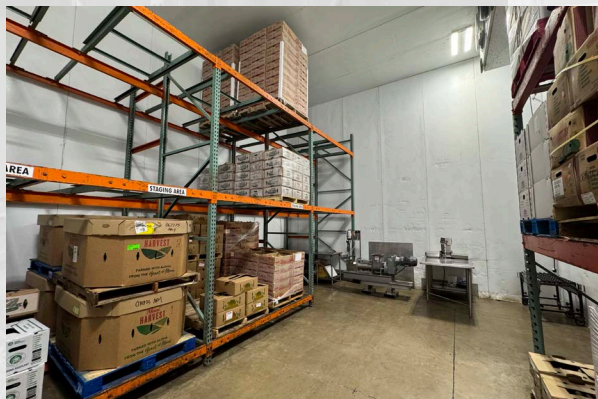
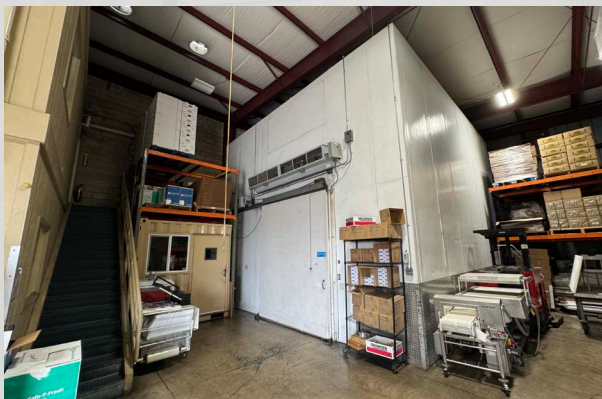
628 LAUMAKA ST

HONOLULU, HI 96819

FOR LEASE



ChaneyBrooks

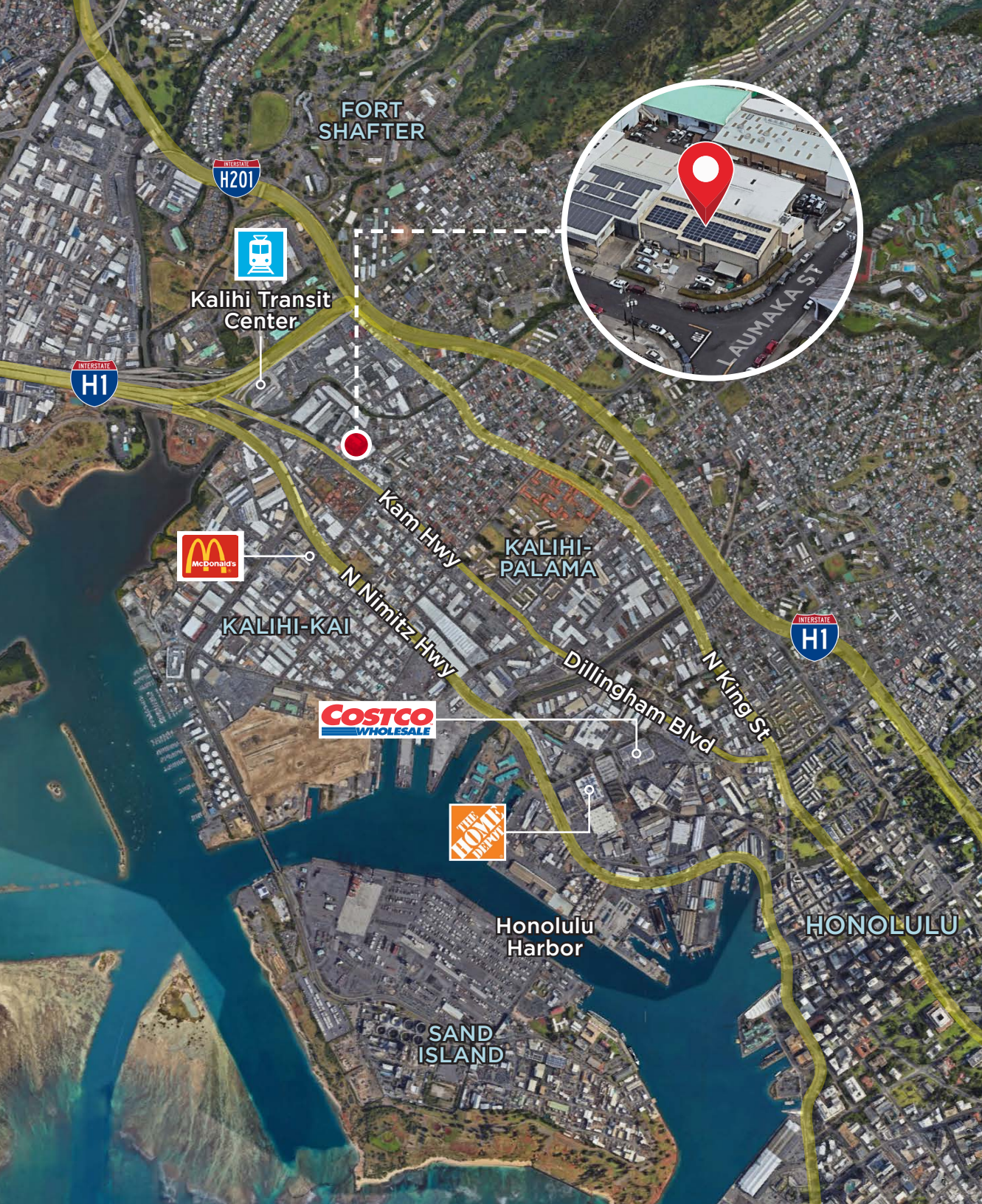


628 Laumaka Street offers a 4,400-square-foot industrial building with an additional 896 SF of second floor office space on 8,917 square feet of land in an IMX-1 zoned area. The property is equipped with **three cold storage boxes, heavy power**, and a **large yard space well-suited for operations, parking, or outdoor storage**. This combination makes it an excellent fit for food processing, distribution, or other cold storage-related businesses. The base rent is \$1.69 per square foot per month, with additional operating expenses of \$0.54 per square foot per month, providing a functional and competitively priced option in Honolulu's tight industrial market.

PROPERTY SUMMARY

ADDRESS	628 Laumaka St Honolulu, HI 96819
BASE RENT	\$1.69 SF/MO
OpEx	\$0.54 SF/MO
TERM	Until: 7/31/2027
BUILDING SIZE	5,296 SF*
LAND SIZE	8,917 SF
ZONING	IMX-1

*Includes 896 SF of second floor office space



CONTACT US

ANTHONY PROVENZANO (B), CCIM, SIOR

HI LIC RB-22101

+1 808 387 3444

aprovenzano@chaneybrooks.com

KELLY A. VEA (S), CCIM

HI LIC RS-79079

+1 808 489 2703

kvea@chaneybrooks.com

TREVOR BLAKE (S)

HI LIC RS-87251

+1 808 778 7409

tblake@chaneybrooks.com



ChaneyBrooks

1440 Kapiolani Boulevard, Suite 1010

Honolulu, Hawaii 96814

Main +1 808 544 1600 | Fax +1 808 544 9574

cushwake.com | chaneybrooks.com

©2025 CUSHMAN & WAKEFIELD CHANEYBROOKS.

NO WARRANTY OR REPRESENTATION, EXPRESS OR IMPLIED, IS MADE TO THE ACCURACY OR COMPLETENESS OF THE INFORMATION CONTAINED HEREIN, AND SAME IS SUBMITTED SUBJECT TO ERRORS, OMISSIONS, CHANGE OF PRICE, RENTAL OR OTHER CONDITIONS, WITHDRAWAL WITHOUT NOTICE, AND TO ANY SPECIAL LISTING CONDITIONS IMPOSED BY THE PROPERTY OWNER(S). AS APPLICABLE, WE MAKE NO REPRESENTATION AS TO THE CONDITION OF THE PROPERTY (OR PROPERTIES) IN QUESTION.