

# 500 ALAKAWA ST

## UNIT 204

HONOLULU, HI 96817

**FOR LEASE**



ChaneyBrooks

500 Alakawa St, Unit 204 offers 4,500 square feet of flexible industrial space and 6,500 square feet of yard space in Honolulu's Kalihi industrial corridor. The unit features a functional mix of warehouse and office space, making it suitable for a variety of industrial, distribution, and service-oriented users.

Two roll-up doors provide efficient loading and access to the warehouse area, while the office buildout supports administrative operations. The property is zoned IMX-1, allowing for a wide range of light industrial and commercial uses. Tenants will also benefit from the property's ample yard area, providing additional space for parking, storage, or operational needs.

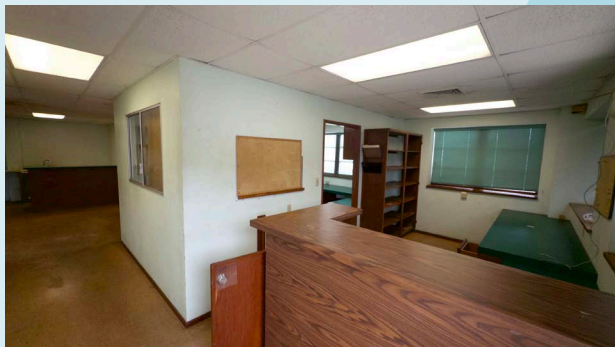
Conveniently located near major transportation routes, the property offers easy access to Honolulu's port, airport, and surrounding industrial districts.



## PROPERTY SUMMARY

<b>ADDRESS</b>	500 Alakawa St Unit 204
<b>GROSS RENT</b>	\$12,500/Month
<b>BUILDING SIZE</b>	4,500 SF
<b>YARD SPACE</b>	6,500 SF
<b>ZONING</b>	IMX-1
<b>ROLL UP DOORS</b>	2







Subject  
Property

DOLE THOROUGHFARE

ALAKAWA ST



Daniel K. Inouye International Airport

KALIHI-PALAMA

Future Rail Station

KALIHI-KAI



Honolulu Community College



SAND ISLAND



Honolulu Harbor



HONOLULU



500 ALAKAWA ST  
UNIT 204

CONTACT US FOR MORE INFORMATION

**ANTHONY PROVENZANO (B), CCIM, SIOR**  
HI LIC RB-22101  
+1 808 387 3444  
aprovenzano@chaneybrooks.com

**KELLY A. VEA (S), CCIM**  
HI LIC RS-79079  
+1 808 489 2703  
kvea@chaneybrooks.com

**TREVOR BLAKE (S)**  
HI LIC RS-87251  
+1 808 778 7409  
tblake@chaneybrooks.com

1440 Kapiolani Blvd, Suite 1010  
Honolulu, Hawaii 96814  
Main +1 808 544 1600 | Fax +1 808 544 9574  
www.chaneybrooks.com